



Senate

| | |
|--|---|
| Paper Title | Assessment Handbook 2014-15 |
| Outcome requested | Senate is asked to consider and approve the Assessment Handbook 2014-15, giving special consideration to the proposed changes from the previous iteration. |
| Points for Senate members to note and further information | <p>The Assessment Handbook contains QMUL's assessment policies, giving guidance and instruction on the implementation of the Academic Regulations.</p> <p>The full Assessment Handbook is attached, together with a covering document explaining any changes of substance that are proposed.</p> |
| Questions for Senate to consider | Changes of substance are presented and explained point by point. Senate is asked to give particular attention to those points when considering the Assessment Handbook for approval. |
| Regulatory/statutory reference points | <p>"[...] Senate, or its delegated authority, shall approve the Assessment Handbook, which provides further detail and requirements in relation to the conduct of SEBs and DEBs." <i>Academic Regulations 2013-14, 1.27</i></p> <p>The approval of the Assessment Handbook is not delegated</p> |
| Strategy and risk | The Assessment Handbook is a key policy document. |
| Reporting/consideration route for the paper | Senate to approve. |
| Author | Simon Hayter, Assistant Academic Registrar (Assessment Governance) |
| Sponsor | Professor Susan Dilly, Vice-Principal (Teaching and Learning) |

Assessment Handbook 2014/15 What's New?

Background

The Assessment Handbook contains QMUL's assessment policies, giving guidance and instruction on the implementation of the Academic Regulations. This covering document details changes of note since 2013-14.

Senate is asked to **note** the following points:

- there are very few notable changes this year. The majority of the changes recommended through the Assessment Governance Review would only come into effect from 2015/16;
- some changes are contingent upon the approval of other papers under consideration at the June 2014 meeting of Senate;
- minor changes to wording that do not affect meaning are not included in this cover document. The full document, which accompanies this paper, shows all amendments as track changes;

Item: 2.1 – University of London and QMUL awards

Text: The University of London delegates authority to QMUL to make awards of the University (Ordinances, 12-15). Queen Mary also possesses and exercises independent degree awarding powers. From 2014-15, all new cohorts are registered for QMUL awards unless individual programme/award regulations specify otherwise.

Change and reason: The second sentence is new, to reflect the fact that all awards issued to 2014-15 and later cohorts will be QMUL awards.

Item: 3.17 – oral examinations

Text: Oral examinations shall only be used as approved elements of module assessment for taught programmes, with detailed marking schemes. Where an oral assessment is used in this way, it must be conducted by no fewer than two examiners (Academic Regulations, 3.70). Where an oral assessment is recorded, the second examiner may mark the recording rather than (or in addition to) attending the examination. Oral examinations should not be used to determine classifications in borderline cases.

Change and reason: Provision for the oral examination to be recorded and second marked at a later point has been added. References to vivas have been removed, as these are a distinct form of assessment particular to research programmes.

Item: 3.20 – access to QMUL facilities for students resitting out of attendance

Text: The majority of resitting students are by status not enrolled, and therefore are not required to be in attendance; they have limited entitlement to use campus facilities (libraries, computer rooms, schools and institute facilities, laboratories, etc) (Academic Regulations, 2.33). These students are referred to as 'resitting out of attendance'. Resitting students must register by the specified deadline for the modules they wish to resit, and must take them at the first available opportunity (Academic Regulations, 2.46-50).

Change and reason: This previously stated that students resitting out of attendance were not normally entitled to use QMUL facilities. It has been updated to reflect the current policy.

Item: 5.40 – specific learning disabilities

Text: Various – refer to the Handbook.

Change and reason: There are no policy changes, but all references to dyslexia have been replaced with references to 'specific learning disabilities' in line with guidance from the Disability and Dyslexia Service.

Item: 5.65 - Viewing examination scripts under supervision

Text: Students are entitled to know the marks for examinations, but they are not entitled to receive their examination scripts; examiners shall not release these (*though with permission from the SEB, a student may view a script under supervision*). Examiners may discuss examination results with students on an individual basis, and this is strongly encouraged where students raise queries after the release of marks (this has a significant impact in reducing numbers of academic appeals).

Change and reason: Only the text in italics is new. This permits SEBs to discuss examination feedback with individual students in detail, where the SEB chooses to do so.

Item: 5.69 - Debtors

Text: Marks cannot be released to students with tuition fee debts to QMUL. The student view of marks in MySIS is blocked for debtors. Further information on debtors is provided in Section 10 of the Assessment Handbook.

Change and reason: This previously read ‘...students who are in debt...’, covering a wider range of debts. Following a decision of the Office of Fair Trading, universities can no longer withhold results from students with debts other than tuition fee debts.

Item: 6.39 – failure to meet the SEB quorum

Text: The SEB must ensure that it meets the quorum before it can proceed with the meeting. If the meeting does not meet the quorum then its decisions are not valid or binding. Where there is exceptionally good reason why a meeting will not meet the quorum, a suspension of regulations may be sought via the Assistant Academic Registrar (Assessment Governance) to make the board’s decisions binding. However, this should be sought well in advance of the board, and SEBs are responsible for ensuring that all members attend.

Change and reason: The final sentence previously stated that these suspensions ‘must’ be sought in advance. It has been amended in line with a proposed change to the regulations that would grant a little more flexibility in this area (please refer to the separate paper on the Academic Regulations.)

Item: 10.7-8 – suspension of regulations**Text:**

10.7: Requests for the suspension of regulations are reserved to Heads of Schools, Institutes, Directorates or equivalent, and to the Degree Examination Boards (Academic Regulations, 1.22).

10.8: Heads of Schools, Institutes, Directorates or equivalent may normally only request suspensions that do not relate to examination board proceedings, for example admissions decisions, but may act on behalf of a SEB Chair/Deputy where unavailable.

Change and reason: The only change is that ‘Heads of Directorate, or equivalent’ has been added, allowing a slightly wider range of individuals to request suspensions. This would mainly apply to suspensions concerning regulations on admissions, appeals, assessment offences, and other such general issues. Suspensions are rare in these areas, but have proved necessary in the past. Senate was consulted on this change earlier in 2014. The change is contingent upon a change to the Academic Regulations, also under consideration at the June 2014 meeting of Senate.

Item: 10.17 – assessment offences**Text:**

Allegations of any of the following must be dealt with according to the Assessment Offences Regulations;

- i. breach of any section of the Academic Regulations relating to the conduct of assessment;
- ii. offences relating to an invigilated examination:
 - a. unauthorised access to an examination paper before an examination;
 - b. forgery of an examination timetable produced by QMUL;
 - c. removal of an question paper, answer script or other examination stationery from an examination venue;
 - d. causing a disturbance during an examination, either physically, verbally, or through an electronic device;
 - e. refusal to cooperate with an invigilator, or to follow an invigilator’s instructions;

| |
|---|
| <ul style="list-style-type: none"> f. possession of unauthorised materials whilst under examination conditions, or leaving unauthorised material in an examination venue (including cloakrooms and toilets); g. access, possession or use of unauthorised material on a computer, mobile telephone, or other electronic device during an examination; h. communicating with another candidate while under examination conditions; i. copying, or attempting to copy, the work of another candidate; j. having writing on the body in an examination venue; <ul style="list-style-type: none"> iii. plagiarism; iv. the fraudulent reporting of source material; v. the fraudulent reporting of experimental results, research, or other investigative work; vi. collusion in the preparation or production of submitted work, unless such joint or group work is explicitly permitted; vii. use, or attempted use, of ghost writing services for any part of assessment; viii. submission of work, or sections of work, for assessment in more than one module or assignment (including work previously submitted for assessment at another institution); ix. impersonation of another student in an examination or assessment, or the employment of an impersonator in an examination or assessment. |
| <p>Change and reason: Updated to reflect the current regulations. Offence ii-j is of some note; this previously read, "entering an examination venue with writing on the body." That was queried and challenged during the examination period, and it has been amended to give a more comprehensive definition.</p> |

| |
|---|
| <p>Item: 10.32 – Debtors (withholding results)</p> |
| <p>Text: Formal results shall be withheld from students who have tuition fee debts but who are still enrolled at QMUL.</p> |
| <p>Change and reason: Amended in line with a ruling from the Office of Fair Trading. Only formal results can be withheld, and only where students have tuition fee debts (rather than any form of academic debt, as previously).</p> |

| |
|--|
| <p>Item: 10.33 – Debtors (appearance on board reports)</p> |
| <p>Text: These students shall be assessed, and decisions on progression and award shall be made. However, formal notification of their results shall be withheld until clearance has been received.</p> |
| <p>Change and reason: Amended in line with the OFT ruling (see above, 10.32). This previously also stated that debtors would be identified on examination board reports; that will no longer be the case.</p> |

Table of Contents

ASSESSMENT
HANDBOOK

2014-15

Deleted: 3

Deleted: 4

Considered by Senate: 12 June 2014

Deleted: Approved

Deleted: 20

Deleted: 2013

| | |
|---|-----------|
| 1. Introduction and Sources of Advice | 1 |
| Introduction | 1 |
| Further information | 1 |
| Common acronyms | 1 |
| Key contacts | 2 |
| Key dates 2014-15 | 3 |
| <i>Degree Examination Board meetings 2014-15</i> | 3 |
| 2. Assessment Framework and Delegations | 4 |
| Degree awarding powers | 4 |
| Management of academic standards | 4 |
| Examination boards | 4 |
| <i>Relationship between examination boards and other committees of Senate</i> | 4 |
| Delegated authority | 4 |
| Academic Regulations | 5 |
| Queen Mary Academic Credit Framework | 5 |
| Assessment requirements for modules, programmes, and awards | 5 |
| <i>Modules</i> | 5 |
| <i>Programmes</i> | 6 |
| <i>Awards</i> | 7 |
| 3. Setting Assessment | 8 |
| General | 8 |
| In-course assessment | 8 |
| <i>Dissertations and projects</i> | 8 |
| <i>In-class tests</i> | 8 |
| Examination papers for invigilated examinations | 9 |
| <i>Procedure</i> | 9 |
| Oral examinations | 9 |
| Assessment for resitting students | 10 |
| <i>Resitting assessment that requires regular attendance</i> | 10 |
| <i>Resitting in-course assessment</i> | 11 |
| <i>Resitting dissertation and projects</i> | 11 |
| <i>Resitting examinations</i> | 11 |
| Alternative assessment | 12 |
| 4. Conduct of Invigilated Examinations | 13 |
| Official examination periods | 13 |
| Special examination arrangements | 13 |
| Religious holidays | 13 |
| Examination timetables | 14 |
| <i>Clashes</i> | 14 |
| Invigilation arrangements | 14 |
| Problems with examinations | 14 |
| <i>Emergency evacuations</i> | 15 |
| <i>Suspected examination offences</i> | 15 |

| | |
|---|-----------|
| Invigilator and student reports | 15 |
| <i>Consideration of reports by Subject Examination Boards</i> | 15 |
| Archiving examination scripts | 15 |
| 5. Marks and Marking | 17 |
| General | 17 |
| Marking schemes | 17 |
| Code of Practice on Double Marking and Moderation (<i>quality assuring marking</i>) | 17 |
| Preliminary | 17 |
| Underlying principles applicable to all methods | 18 |
| The 50 percent rule | 18 |
| The five methods | 18 |
| Examinations | 18 |
| Dissertations and projects | 18 |
| Resolving differences between markers | 20 |
| Marking trails | 21 |
| In-course assessment | 21 |
| Reporting | 21 |
| Students who answer too many examination questions | 21 |
| Students who exceed a specified word limit | 21 |
| Marking assessments for students with specific learning disabilities | 22 |
| Anonymous marking | 22 |
| Collaborative programmes | 22 |
| Designation and preparation of marks | 23 |
| Responsibilities | 23 |
| Calculation of marks | 23 |
| Designation of marks | 23 |
| Designation of awards | 23 |
| Submission of marks and subsequent changes | 24 |
| Publication of marks and awards | 24 |
| 6. Subject and Degree Examination Boards | 26 |
| General | 26 |
| Examination board officers | 27 |
| Chair | 27 |
| Secretary | 27 |
| Scheduling SEB meetings | 28 |
| How many meetings are needed? | 28 |
| Preparing for the SEB meeting | 28 |
| Generating reports | 28 |
| Review of reports | 29 |
| Production and circulation of papers | 29 |
| Sub-boards | 30 |
| Running an SEB meeting | 30 |
| Preliminary items | 30 |
| Quorum | 30 |
| Joint honours programmes and cross-representation | 31 |
| Confidentiality | 31 |
| Conflicts of interest | 31 |
| Debtors | 32 |
| Minutes of the previous meeting | 32 |
| Matters arising from the previous meeting | 32 |
| Report of Chair's action | 32 |
| Regulations and discretion conventions | 32 |
| Consideration of module results | 32 |
| Report on the monitoring of marking practices | 32 |
| Invigilator and candidate reports | 33 |

| | |
|--|-----------|
| Module results and internal examiners' comments | 33 |
| Consideration of student results | 33 |
| Outstanding investigations into assessment offences | 33 |
| Pre-final year performance and progression | 33 |
| Final year performance and award recommendations | 33 |
| Advanced standing in classification | 34 |
| Discretion | 34 |
| Field of study | 36 |
| External examiners' reports and other matters | 36 |
| List of outstanding external examiner reports from the previous year | 36 |
| Matters arising/outstanding from previous reports | 36 |
| Oral reports from the external examiners | 37 |
| Authority for the Chair to act on behalf of the board | 37 |
| Arrangements for the next meeting | 37 |
| Prizes | 37 |
| After the SEB meeting | 37 |
| Chair's action | 38 |
| Servicing examination boards | 38 |
| General | 38 |
| Minutes | 38 |
| Style of minutes | 38 |
| Information to be recorded | 39 |
| SEB reports to DEBs | 39 |
| Degree Examination Boards | 40 |
| Academic Regulations | 41 |
| Quick reference guide to examination board authorities | 41 |
| 7. Student Failure and Reassessment | 42 |
| Agreeing failure | 42 |
| Reassessment | 42 |
| Resits | 43 |
| Timing of resits | 43 |
| Undergraduate resits | 44 |
| MBBS resits | 44 |
| BDS resits | 44 |
| Postgraduate resits | 45 |
| Resitting individual elements of assessment | 45 |
| Resitting dissertations and projects | 45 |
| Retakes | 45 |
| Required retakes | 46 |
| Retaking dissertations and projects | 46 |
| Recommending and agreeing retakes | 46 |
| Requests to retake after the SEB | 47 |
| 8. External Examiners | 48 |
| General | 48 |
| Purpose of external examiners | 49 |
| Appointment of external examiners | 49 |
| Period of appointment | 50 |
| Moderation of assessment | 50 |
| External examiners' views | 51 |
| Views that contravene regulations or guidance | 51 |
| External examiners' reports | 51 |
| 9. Extenuating Circumstances | 52 |
| Definition | 52 |
| Basic principles | 52 |
| Informing students of EC procedures | 52 |

| | |
|---|-----------|
| Submission of extenuating circumstances | 53 |
| <i>Late submission of extenuating circumstances</i> | 53 |
| Fitness to sit and absence from examinations | 53 |
| <i>Illness during examinations</i> | 53 |
| Decision making | 54 |
| <i>Extenuating circumstances sub-boards</i> | 54 |
| <i>Consideration of claims</i> | 55 |
| <i>Deferral of decisions</i> | 55 |
| <i>Double counting</i> | 55 |
| Possible EC outcomes | 56 |
| <i>Rejection</i> | 56 |
| <i>First sits</i> | 56 |
| <i>Timing of first sits</i> | 56 |
| <i>First takes</i> | 57 |
| <i>Deferring classification (certain UG programmes only)</i> | 57 |
| <i>Discounting credits from classification (certain UG programmes only)</i> | 57 |
| <i>Discretion in classification and progression</i> | 58 |
| Classification | 58 |
| Progression | 58 |
| Monitoring..... | 58 |
| 10. Exceptions and Special Cases | 59 |
| Loss of work, scripts and marks by QMUL | 59 |
| Suspension of regulations | 59 |
| <i>Authority to request and grant a suspension of regulations</i> | 60 |
| <i>Procedure</i> | 60 |
| Assessment Offences..... | 61 |
| <i>Definitions</i> | 61 |
| <i>Plagiarism</i> | 62 |
| <i>Plagiarism statements</i> | 62 |
| <i>Examination offences</i> | 62 |
| <i>Considering students with outstanding assessment offence cases</i> | 62 |
| Debtors | 63 |
| <i>Terminated students</i> | 63 |
| <i>Non-terminated students</i> | 63 |
| Aegrotat provisions | 63 |
| Academic appeals | 64 |
| Revocation of degrees..... | 65 |
| Data protection and release of information..... | 65 |
| Appendix A Glossary of Terms | 66 |
| Appendix B Code of Practice on Assessment and Feedback | 70 |
| Appendix C Production of Examination Papers 2014-15 | 73 |
| Appendix D Examination paper template 2014-15 | 74 |
| Appendix E Notes on the Use of Amanuenses | 75 |
| Appendix F Exam Board Structure 2014-15 | 77 |
| Appendix G Templates | 79 |
| Appendix H Generating SEB Reports from MySIS | 80 |

1. Introduction and Sources of Advice

Introduction

- 1.1 The *Assessment Handbook* provides the regulatory framework, policy, and procedures for the assessment of all taught students (and research students taking taught modules). It is designed to ensure consistent approaches to the management of academic standards.
 - 1.2 The *Assessment Handbook* contains useful advice and information for all staff involved in the assessment of students, including academic and administrative staff. It does not extend to research students studying for an MPhil or PhD.
 - 1.3 The *Assessment Handbook* shall be used as a companion document to the *Academic Regulations*. Cross-references to the *Academic Regulations 2014-15* are provided throughout the *Assessment Handbook*. It shall also be used alongside the *Code of Practice on Assessment and Feedback*, which focuses on pedagogical issues.
 - 1.4 The *Assessment Handbook* is approved by Senate. Comments or queries may be directed to the Assistant Academic Registrar (Assessment Governance) or the Assessment Governance Administrator.
- Further information
- 1.5 The *Academic Regulations* (including previous iterations) and other policy documents, including the *Assessment Handbook*, may be found on the ARCS website.

Deleted: 3

Deleted: 4

ARCS: www.arcs.qmul.ac.uk
Student Office (SMD): www.smd-edu.qmul.ac.uk/student_office
Learning Institute: www.learninginstitute.qmul.ac.uk
Office of the Independent Adjudicator: www.oia-he.org
Quality Assurance Agency: www.qaa.ac.uk
Higher Education Academy: www.heacademy.ac.uk

Common acronyms

| | |
|------------------|---|
| ARCS | Academic Registry and Council Secretariat |
| BDS | Bachelor of Dental Surgery (UG Dentistry programme) |
| DEB | Degree Examination Board |
| LLB | Bachelor of Laws (UG Law programme) |
| LLM | Master of Laws (PG Law programme) |
| MBBS | Bachelor of Medicine, Bachelor of Surgery (UG Medicine programme) |
| PG | Postgraduate |
| QMUL | Queen Mary, University of London |
| SEB | Subject Examination Board |
| SIS/MySIS | Student Information System |
| UG | Undergraduate |

1.6 Key contacts
 Advice on assessment issues may be sought from the following staff in the Academic Registry and Council Secretariat (ARCS).

TBA, Academic Registrar and Council Secretary

- Head of the Academic Registry and Council Secretariat (ARCS)
- ☎ 020 7882 TBC ✉ TBC@qmul.ac.uk

Deleted: Wendy Appleby

Deleted: Secretary to Council and Academic Secretary

Deleted: 5072

Deleted: w.appleby@qmul.ac.uk

Tessa Cornell, Assistant Academic Registrar (Student Records)

- Student records (except MBBS and BDS)
- Official transcripts and pass lists
- ☎ 020 7882 5549 ✉ t.l.cornell@qmul.ac.uk

TBC, Assistant Academic Registrar (Examinations and Awards)

- Examination timetabling
- Production of examination papers
- Invigilation arrangements and the running of examinations
- ☎ 020 7882 TBC ✉ TBC@qmul.ac.uk

Deleted: Ricardo Garcia

Deleted: 7612

Deleted: r.garcia@qmul.ac.uk

Simon Hayter, Assistant Academic Registrar (Assessment Governance)

- Secretary to the Degree Examination Boards
- Subject and Degree Examination Boards
- Academic Regulations and programme regulations, including suspensions
- ☎ 020 7882 7783 ✉ s.n.hayter@qmul.ac.uk

Trudy Mason, Deputy Academic Registrar (Academic Registry)

- Head of the Academic Registry
- Chief Invigilator
- ☎ 020 7882 5549 ✉ t.j.mason@qmul.ac.uk

Jane Pallant, Deputy Academic Registrar (Academic Secretariat)

- Head of the Academic Secretariat
- ☎ 020 7882 5527 ✉ j.pallant@qmul.ac.uk

Kate Ruffell, Assessment Governance Administrator

- External examiner appointments, payments and reports
- Subject and Degree Examination Boards
- Academic Regulations and programme regulations, including suspensions
- ☎ 020 7882 7789 ✉ k.ruffell@qmul.ac.uk

Luke Vulpiani, Assistant Academic Registrar (Student Casework)

- Assessment offences
- Academic appeals and other appeals
- Complaints
- Disciplinary cases
- ☎ 020 7882 3457 ✉ l.vulpiani@qmul.ac.uk

1.7 Key dates 2014-15
 This table provides a summary of key dates directly related to assessment. The full Academic Calendar can be found at www.arcs.qmul.ac.uk

To follow, once confirmed.

Degree Examination Board meetings 2014-15

| | |
|--|-----------------|
| Postgraduate Science (non-SMD) (2013-14 meeting) | 17 October 2014 |
| Postgraduate Law (2013-14 meeting) | 22 October 2014 |
| Postgraduate Science (SMD) (2013-14 meeting) | 24 October 2014 |
| Postgraduate Arts (2013-14 meeting) | 29 October 2014 |
| Examination Board Briefing | TBC |
| Undergraduate Dentistry (BDS) | TBC |
| QMUL-BUPT Joint Programme (UG Engineering) | TBC |
| Undergraduate Law (joint SEB/DEB) | TBC |
| Undergraduate Medicine (MBBS) | TBC |
| Undergraduate Arts | TBC |
| Undergraduate Science | TBC |
| Undergraduate Engineering | TBC |
| Joint Postgraduate Summer Board | TBC |
| Postgraduate Science (non-SMD) | TBC |
| Postgraduate Science (SMD) | TBC |
| Postgraduate Law | TBC |
| Postgraduate Arts | TBC |

Deleted: 3

Deleted: 4

Deleted: (all dates are in 2014)

Deleted: 1

Deleted: TBC

Deleted: Date ... [1]

Deleted: 1

Deleted: 2013

Deleted: 14

Deleted: 1 Examination Board Briefing 19th March 2014

Deleted: Undergraduate Dentistry (BDS) TBC

Deleted: QMUL-BUPT Joint Programme (UG Engineering) TBC

Deleted: Undergraduate Law (joint SEB/DEB) TBC

Deleted: Undergraduate Medicine (MBBS) TBC

Deleted: Undergraduate Arts 27th June 2014 TBC

Deleted: Undergraduate Science 3rd July 2014 TBC

Deleted: Undergraduate Engineering 4th July 2013 TBC

Deleted: Joint Postgraduate Summer Board 23rd July 2014 TBC

Deleted: Postgraduate Science (non-SMD) 17th October 2014 TBC

Deleted: Postgraduate Science (SMD) 24th October 2014 TBC

Deleted: Postgraduate Law 22nd October 2014 TBC

Deleted: Postgraduate Arts 29th October 2014 TBC ... [2]

2. Assessment Framework and Delegations

Degree awarding powers

- 2.1 The University of London delegates authority to QMUL to make awards of the University (Ordinances, 12-15). Queen Mary also possesses and exercises independent degree awarding powers. [From 2014-15, all new cohorts are registered for QMUL awards unless individual programme/award regulations specify otherwise.](#)

Management of academic standards

- 2.2 Responsibility for the management of academic standards is delegated to Senate (Charter, 11). Senate delegates authority for the consideration of awards, progression, and student achievement to the examination boards. The application of this authority is specified in the *Academic Regulations*.

- 2.3 The Quality Assurance Agency (QAA) also sets standards for the management of academic standards and the assessment of students, in its *Quality Code for Higher Education*. QMUL is required to adhere to all sections of the QAA Quality Code.

Examination boards

- 2.4 Queen Mary operates a two-tier system of examination boards: Subject Examination Boards (SEBs) and Degree Examination Boards (DEBs) (*Academic Regulations, 1.24-1.48*). The terms of reference and membership of examination boards may be found in Section 6 of the *Assessment Handbook*.

Deleted: 23

Deleted: 46

- 2.5 SEBs agree module results and failure, student progression, and extenuating circumstances claims. They make recommendations to DEBs on awards, classifications, retakes/first takes, and requests for the suspension of regulations. SEBs meet in February (associates), June (main UG boards, PG boards for progression), August/September (late summer assessment), and October (main PG boards).

- 2.6 DEBs consider and agree recommendations for awards, classifications, and retakes/first takes. Progression and module marks are implicitly endorsed by DEBs. DEBs consider recommendations for the suspension of regulations, and must endorse these requests if they are to be considered by the Vice-Principal (Teaching & Learning). DEBs ensure consistency and fairness between SEBs and the proper application of regulations; an external member sits on most DEBs to help meet these aims. DEBs meet in June/July (all boards), and October (PG only).

- 2.7 The functions of SEBs and DEBs may be combined in certain instances.

Relationship between examination boards and other committees of Senate

- 2.8 Programme and module proposals and amendments are considered by Taught Programmes Board and/or the relevant Teaching and Learning Committee (or equivalent). Changes to the *Academic Regulations* and other institutional governance and policy are considered by Senate. Task and finish groups may be established to work on specific assessment projects and make recommendations to Senate. Further information on Senate and its committees may be found at www.arcs.qmul.ac.uk.

Delegated authority

- 2.9 Authority for the award of degrees and management of academic standards is delegated through a clear cascade from Senate. The full framework of delegations may be found in the appendix to the *Academic Regulations*; this also includes delegations to Heads of Schools and Institutes.

- 2.10 Heads of Schools and Institutes shall normally appoint nominees for procedures such as authorising interruptions of study, and investigating assessment offences and disciplinary cases. Further advice on appropriate delegations of authority may be sought from the Academic Secretariat.

Academic Regulations

- 2.11 The *Academic Regulations* set out common rules for the management of academic standards, and form the basis of QMUL's contract with students. In publishing the *Academic Regulations*, QMUL makes a clear statement on the ways in which it assesses the achievement of academic standards and the bases for the conferment of awards.

- 2.12 The *Academic Regulations* are amended annually and issued with guidance identifying changes from previous iterations. The majority of regulations apply to all students. Examples of regulations that may not normally be amended during an individual student's period of registration include those on progression, award, and duration of study.

- 2.13 Advice on the application and interpretation of the *Academic Regulations* may be sought from the Assistant Academic Registrar (Assessment Governance) or the Assessment Governance Administrator.

Queen Mary Academic Credit Framework

- 2.14 The Queen Mary Academic Credit Framework (QMACF) provides a structure for all Queen Mary programmes leading to an award of the University of London or QMUL. The QMACF informs curriculum design and structure, and the ways in which QMUL understands and expresses its academic standards. The QMACF is reflected in the *Academic Regulations* and in programme and module regulations. The framework was introduced in 2008/09, and applies to all students who enrolled from that point forward. The QMACF is available online: www.arcs.qmul.ac.uk/policy/index.html

Assessment requirements for modules, programmes, and awards

Modules

- 2.15 The assessment requirements (including weightings and reassessment details) for every module shall be laid out in the module specification and regulations. These shall be agreed through the module approval processes (*Academic Regulations, 1.17-18 and 3.3*). Advice on module amendment and approval may be sought from the Quality and Standards Officers in ARCS.

- 2.16 Students shall be informed of the assessment requirements for each module at the start of the academic year (*Academic Regulations, 3.4*). Only approved assessment methods shall be used in the processing and agreement of results. Rarely, it may be necessary to make minor amendments to module assessment in the course of the academic year due to unforeseen circumstances. In these situations, advice must always be sought from ARCS.

- 2.17 All elements of assessment are categorised as one of the following types:

- i. *Invigilated examination (EXM)*: A formal, timed and invigilated assessment that takes place under the regulations for invigilated examinations. To include but not limited to: seen and unseen examinations (including on-line examinations) that take place in QMUL's formal examination periods.

- ii. *Coursework (CWK)*: An assessment that takes place during the module. To include but not limited to: essays, reports, presentations, poster presentations, seminar/tutorial work, in-class or in-semester tests, mid-session examinations, project proposals, gobbet exercises and homework sheets.
 - iii. *Practical (PRA)*: An assessment that requires the application or demonstration of knowledge and/or skills/competencies in a practical context. To include but not limited to: laboratory work, computer work, performances, fieldwork, Objective Structured Clinical Examinations (OSCEs) and oral assessments in languages.
 - iv. *Dissertation/project (DIS)*: An extended piece of independent study that is assessed by the output report or long essay. To include but not limited to: dissertations, research projects and project reports.
 - v. *Professional capability (CAP)*: An assessment of a student's professional attitude and conduct to meet the requirements of a Professional and Statutory Regulatory Body. To include but not limited to: assessment of behaviour and conduct (primarily for primary qualifying medical and dental qualifications but may be appropriate in other programmes).
- 2.18 It is good practice to review module syllabi and requirements annually. Any changes must be made by a specified deadline well before the start of the academic year, using module amendment or proposal forms. These shall be considered for approval by the relevant school/institute Teaching and Learning Committee (or equivalent). The exact processes and levels of approval required depend upon the nature of the amendments; further details may be sought from the Quality and Standards Officers in ARCS, and online: <http://www.arcs.qmul.ac.uk/quality/index.html>.
- 2.19 When changes to modules are approved, the responsible school or institute shall immediately communicate this to other schools whose students take the modules as part of their programmes of study (either as core, compulsory, or elective modules).
- 2.20 Modules may specify prerequisites. These may be generic (e.g. 'A-Level French or equivalent'), or specific modules. Prerequisites may be waived on the direct or delegated authority of the Head of School or Institute; this shall normally be delegated to programme directors or module convenors.
- 2.21 Each module is 'owned' by a single Subject Examination Board (SEB), which is responsible for setting assessment and agreeing results. Teaching may be delivered by other schools or institutes where appropriate and necessary, though this is rare.
- 2.22 Students frequently take modules belonging to multiple SEBs. SEBs must ensure that all results are submitted to the Student Information System by the published deadlines, and that the dates of other SEBs are noted. The responsible SEB must inform those other affected SEBs if any results will not be submitted by the deadline.
- Programmes**
- 2.23 Programme requirements shall be detailed in the programme specification and regulations, which shall be agreed through the programme approval and amendment processes. Programme specifications shall include learning outcomes, and how these are to be assessed. Programme specifications shall also include details of modules that are core, compulsory, and elective for the programmes, and the patterns through which these shall be studied; this is known as the 'diet'. Students shall be informed of their programme requirements at the start of their studies.

- 2.24 Any regulations that deviate from the *Academic Regulations* must be stated in the programme specification. Deviations (known as special regulations) are subject to approval from the Taught Programmes Board, and will be granted only in exceptional cases. Guidance on programme approval and amendment may be sought from the Quality and Standards Officers in ARCS, and online:
- 2.25 www.arcs.qmul.ac.uk/quality/index.html
- 2.26 Changes to the structure of programmes shall normally be phased in so that changes only affect new cohorts of students. This is not always possible however and, where there is a clear rationale, changes may be proposed during the course of a student's studies. The student body must be consulted in these instances to take account of their concerns (*Academic Regulations*, 1.14). Once this consultation has taken place, changes to programme specifications must be agreed through the Taught Programmes Board in the normal manner.
- 2.27 Should changes to programme specifications be required for one year only, or should they only relate to a specific group of students, then a suspension of regulations may be sought to permit students to take a diet of modules that is not formally approved. For example, should a module be unexpectedly cancelled at late notice, a suspension of regulations should be sought to permit students for whom the module was compulsory to take an alternative module.
- Awards**
- 2.28 Award and progression requirements are specified in the *Academic Regulations*. Where non-standard requirements have been approved, these are given in the Special Regulations (*Academic Regulations*, Sections 6 and 7). Individual special regulations shall be approved by Taught Programmes Board, and the Special Regulations as a whole shall be approved by Senate. Advice on special regulations may be sought from the Assistant Academic Registrar (Assessment Governance). Special regulations will generally only be approved in exceptional cases, for example, if national professional requirements apply.

3. Setting Assessment

General

3.1 Assessment shall be set and approved as part of the module approval process, and details (including reassessment information) shall be communicated to students at the start of the academic year (*Academic Regulations*, 3.4).

3.2 Every element of assessment must be tied to specific learning outcomes for the associated module. The marking scheme for the assessment should likewise measure the learning outcomes, though where intended learning outcomes are 'generic', the assessment marking schema may likewise be generic. The most commonly used marking schemes/systems are criterion referencing, model answers, and skeleton answers. QMUL recognises the need for variations in practice in the use of marking schemes to take account of discipline based differences.

In-course assessment

3.3 In-course assessment refers to all module assessment except for examinations. The following assessment categories used at QMUL are considered as in-course assessment: coursework, practical assessment, professional capability, and dissertation/project (*Academic Regulations*, 3.3-3.7; 3.60-3.79). Formal definitions of the assessment categories are given in Section 2 of the *Assessment Handbook*.

3.4 Examples of good practice and approaches for designing in-course assessment may be found in the *Code of Practice on Assessment and Feedback* (Appendix B), and online: www.learninginstitute.qmul.ac.uk.

3.5 There is no formal requirement for in-course assessment to be approved by external examiners. However, it is good practice to seek external examiners' views on the nature of proposed assessments. Where modules are assessed solely by in-course assessments, SEBs are strongly encouraged to discuss the assessment design with the external examiner, as well as student performance and results. SEBs must supply marking schemes to external examiners at the time of sending the assessment itself. These can (and should) still be amended following comments from the externals or discovery of alternative solutions.

Dissertations and projects

3.6 Titles for individual dissertations and projects shall be agreed between students and supervisors. Titles may be selected from prescribed lists, or derived from discussions. Marking schemes tailored to the specific module learning outcomes shall be made available to students at the beginning of the academic year (as is the case for all modules).

3.7 It is strongly recommended that supervisors and students keep summary records of supervision meetings. These are helpful for monitoring progress, and can be useful in allegations of inadequate supervision.

In-class tests

3.8 In-class tests and mid-semester tests are not considered to be invigilated examinations; they are not covered by the *Regulations for Invigilated Examinations*. These tests shall be classified as 'coursework'. The dates of tests shall be released at the start of the academic year, and the conditions under which the tests will take place shall be communicated to students in writing in advance.

Examination papers for invigilated examinations

3.9 It is the responsibility of Heads of Schools and Institutes to ensure that appropriate examination procedures are in place. However, it is the responsibility of SEB Chairs to oversee the production and agreement of examination papers (*Academic Regulations*, 1.40 and 3.9-10). This shall normally be delegated to a subset of examiners known as a scrutiny committee. The QMUL procedures and policies may be found in the document *Production of Examination Papers* (Appendix C).

3.10 Every SEB must operate a Scrutiny Sub-board, to ensure the quality and standards of the papers. As well as ensuring that the questions (and answers) are fully correct, the Sub-board shall ensure that no errors in spelling or grammar are present.

Procedure

3.11 Examination papers (both questions and solutions) shall be prepared by internal examiners in accordance with QMUL's approved minimum standards and template (Appendices C and D). These shall then be reviewed by scrutiny committees (sub-committees of SEBs) before being sent to the appropriate external examiners for review and approval.

3.12 SEBs must ensure that papers are entirely free of grammatical and typological errors before sending them to external examiners. SEBs must supply marking schemes to external examiners at the time of sending the assessment itself. These can (and should) still be amended following comments from the externals or discovery of alternative solutions. Any comments or amendments suggested by the external examiner must be responded to, and acted upon.

3.13 Should an external examiner refuse to agree an examination paper, a report must be submitted to the Chair of the DEB, and to the Academic Secretary (or nominee). The Chair of the DEB shall rule on whether or not the paper should be approved, or if amendments are needed. This decision shall be based upon consideration of both the external examiner's objections, and the viewpoint presented by the school or institute responsible for setting the examination paper.

3.14 The final copies of examination papers shall be approved by SEB Chairs before the question paper is submitted to Registry by the set deadline.

3.15 Examination papers for *all* sittings of examinations must be set, scrutinised and approved according to the approved procedures and to the required minimum standards (*Academic Regulations*, 3.8-3.10). External examiners must review and approve all examination papers (including resit papers just for resitting students), even where individual questions have been agreed separately in the past.

3.16 SEBs are strongly encouraged to approve more than one paper per module; the second paper can be used for late summer resits (where used), late summer first sits, and as a fall-back if a problem is discovered with the first paper or there is a security breach. If the second paper is not used, it can be used the following year provided that the syllabus has not changed.

Oral examinations

3.17 Oral examinations shall only be used as approved elements of module assessment for taught programmes, with detailed marking schemes. Where an oral assessment is used in this way, it must be conducted by no fewer than two examiners (*Academic Regulations*, 3.70). Where an oral assessment is recorded, the second examiner may mark the recording rather than (or in addition to) attending the examination. Oral examinations should not be used to determine classifications in borderline cases.

Deleted: 39

Deleted: (22-28 March 2013)

Deleted: (viva voce)

Deleted: A viva voce is an o

Deleted: .

Deleted: These

Deleted: viva

Deleted: Viva voce

Assessment for resitting students

- 3.18 Students shall be informed of all arrangements for assessment, including reassessment, when they commence modules for the first time. These arrangements must be in accordance with the approved module specifications and regulations (*Academic Regulations*, 3.4).
 - 3.19 Since 2010/11, reassessment has been either 'synoptic', or 'standard' (i.e. not synoptic). Where synoptic reassessment is used, students failing the modules shall take a single assessment weighted at 100 percent for the resit (rarely, and where approved in the module specification, synoptic reassessment may comprise more than one element of assessment). Where standard reassessment is used, students shall resit the failed elements of assessment, and the marks for any elements that were passed on the first attempt shall stand.
 - 3.20 The majority of resitting students are by status not enrolled, and therefore are not required to be in attendance; they have limited entitlement to use campus facilities (libraries, computer rooms, schools and institute facilities, laboratories, etc) (*Academic Regulations*, 2.33). These students are referred to as 'resitting out of attendance'. Resitting students must register by the specified deadline for the modules they wish to resit, and must take them at the first available opportunity (*Academic Regulations*, 2.46-50).
 - 3.21 Resit and first sit registrations for both students resitting out of attendance and students resitting in attendance must be confirmed by the specified deadline and in accordance with the stated procedure. Students who opt out or do not confirm their registration forfeit any remaining attempts to pass the relevant module, and students resitting out of attendance may also have their registration terminated and cease to be a student (*Academic Regulations*, 2.48-50).
 - 3.22 All resits must take place at the first available opportunity, and registration is managed as part of the normal module registration process. Resitting students are only permitted to attempt the assessment again; they are not entitled to attend teaching for the modules.
 - 3.23 Undergraduate students not on the LLB, MBBS or BDS programmes shall be advised that taking additional assessment while studying a full load in attendance should be carefully considered. This can affect performance in other modules. Resits are capped at the pass marks (for the module mark); they may have only limited impact upon final degree classifications and so may be thought inadvisable.
 - 3.24 QMUL policy states that students resitting modules shall always be assessed on the curricula that were taught when they first attempted the module in attendance (except LLB and LLM). Examiners must consider the specific needs of resitting students when setting formal assessment.
 - 3.25 The elements to be reassessed for each module and student shall be agreed by SEBs. The SEBs' decisions must not contravene any previously published information on resit arrangements.
- Resitting assessment that requires regular attendance**
- 3.26 Where assessments require regular attendance (such as laboratory sessions, or field work), students cannot resit and must retake the modules. However, in common with all retakes, this must be explicitly agreed by the DEB. Further information on retaking modules is provided in Section 7 of the *Assessment Handbook*.

Deleted: nor

Deleted: d

Deleted: 32

Deleted: (*Academic Regulations*, 2.44-45)

Deleted: 4

Deleted: 47

Deleted: ¶

Resitting in-course assessment

- 3.27 Where the assessment for a module combines an examination and in-course assessment, the option to resit the in-course assessment shall be offered wherever practicable. Where this is not practicable, students must be notified at the start of the module.
 - 3.28 Where students fail to (i) meet prescribed in-course assessment hurdles, or (ii) pass examinations but not whole modules, it is possible to resit only the in-course assessment (where standard reassessment is used). In these cases, examination marks shall be carried forward and combined with the new in-course assessment marks. The marks from the best attempt shall be used where students fail again (except LLB and LLM, where the most recent mark stands).
 - 3.29 In-course assessment for resitting students shall be designed that it can be completed and submitted without full attendance, and shall be based upon the curricula that students studied when they last took the module in attendance. Module organisers are advised to contact resitting students to ensure that they are aware of the in-course assessment requirements and deadlines. Deadlines for submission shall match those for the current cohort of students.
 - 3.30 Resitting students are eligible to take in-class tests in reassessment, as these only require attendance on a single day. Resitting students shall sit the assessment at the same time as the current cohort, and shall be informed of the test dates as soon as those are agreed.
- Resitting dissertation and projects**
- 3.31 Where students fail dissertations or projects and do not meet their award requirements, SEBs shall determine whether a resit or a retake for the module should be awarded (PG only – retakes are not available for most UG students). The dissertation or project is often core (must be taken and passed), and in those cases it is impossible to meet the award requirements without passing the module.
 - 3.32 Resitting dissertations and projects requires students to rework and improve their original submissions to bring them up to a passing standard; for projects, only the report may need improvement. Students shall pay only the resit fee, and shall receive minimal support (no more than two supervision sessions are advised). As for all resits, the module mark achieved shall be capped to a bare pass.
 - 3.33 Retaking dissertations and projects requires students to undertake new pieces of work, with full supervision and full access to facilities. Students pay pro-rata fees and their marks are capped. Permission to retake any module can only be granted by DEBs, on the recommendation of SEBs. Further information on retaking modules is provided in Section 7 of the *Assessment Handbook*.
- Resitting examinations**
- 3.34 QMUL's policy is that resitting students shall always be assessed on the curriculum from when they last took the module in attendance. Therefore, all examination papers shall be prepared with resitting students in mind.
 - 3.35 If the curriculum for a module has changed to such an extent that resitting students may not be expected to answer the examination paper set for the current cohort, then either, (i) a separate examination paper must be set; or, (ii) a limited number of specific questions to be answered only by resitting students shall be included within the examination paper.

- 3.36 Changes to the format of examinations do not necessarily require separate papers for resitting students; however, this *is* required for changes to the examination duration.
- Alternative assessment
- 3.37 Alternative assessment shall be used only in exceptional circumstances, and shall be formally agreed by SEBs, with written records kept. This shall normally require a suspension of module regulations; however, where this concerns reassessment, SEBs may proceed without a suspension (*Academic Regulations*, 4.35/5.34).
- 3.38 Alternative assessment must test the same learning outcomes and be of comparative complexity to the approved assessment.
- 3.39 Further information may be sought from the Academic Secretariat, and the Assistant Academic Registrar (Assessment Governance) must always be consulted in advance where a SEB intends to employ alternative assessment.

4. Conduct of Invigilated Examinations

- 4.1 The regulations on invigilated examinations may be found in the *Academic Regulations* (3.8-3.59).
- Official examination periods
- 4.2 QMUL's hours of operation stipulate the institution's teaching periods, holidays, and examination periods. These dates are approved by Senate, and may be found online: www.arcs.qmul.ac.uk. Students are required to be available during those periods, and commit to this as part of enrolment when they confirm acceptance of the *Academic Regulations*.
- 4.3 QMUL's official examination periods are: the main April-June period, the late summer resit period in August, and the specific MBBS and BDS examination dates (see *Assessment Handbook*, Section 1). There is also a one week examination period at the start of semester two, but this is reserved for single semester programmes; it occurs during the teaching period of other programmes.
- Special examination arrangements
- 4.4 Students with physical or learning difficulties may apply to sit examinations under special arrangements (*Academic Regulations*, 3.20). Applications shall be considered by the Disability and Dyslexia Service, which will agree the arrangements and notify the student, the school or institute, and Academic Registry or the SMD Student Office. Applications for special arrangements must be submitted by the specified date.
- 4.5 Special arrangements are intended for students with existing or long-standing circumstances, and as a result may also apply outside of the examination periods. Emergency and *ad hoc* requests just before the examination period will be considered, but no guarantee can be given that students can be accommodated. For example, should a student break their writing arm just before the examinations and request an amanuensis (scribe), it may not be possible to grant this. Where this is not possible, the student should not attempt the examination and instead should submit an extenuating circumstances claim form; if the SEB accepts the claim, the student may be granted a first sit at the next available opportunity.
- 4.6 Further advice on special examination arrangements and support for students with disabilities or learning difficulties may be sought from the Disability and Dyslexia Service: www.dds.qmul.ac.uk. Guidance on the use of amanuenses is provided in the *Assessment Handbook*, Appendix E.
- Religious holidays
- 4.7 Students may inform QMUL, using a standard form, of any religious holidays that fall during the official examination periods that will prevent them from attending. This form must be submitted by the deadline specified in the Academic Calendar. Efforts shall be made to accommodate these requests so far as is practicable, but this cannot be guaranteed. This procedure applies only to specific dates in the year, not to normal religious practice.
- 4.8 Students are expected to participate in teaching, learning and assessment activities during QMUL's approved term and semester dates and hours of operation (*Academic Regulations*, 2.64-68). If the occurrence of a religious festival or holiday will result in

absence, students may make formal requests to their Heads of School or Institute to permit the absence. If students miss any assessments as a result of approved absences then a best effort approach should be taken to permit late submission, or to rearrange tests or laboratory sessions. Further guidance may be sought from the Assistant Academic Registrar (Assessment Governance).

Examination timetables

- 4.9 Students shall receive personal examination timetables at least three weeks before an official examination period is scheduled to begin (*Academic Regulations*, 3.12). These shall be provided electronically through MySIS, and students must confirm that they have read the 'Notes for Examination Candidates' document before accessing the timetables. Students not in attendance receive their timetables by post. It is the responsibility of students to ensure that address details are correct.
- 4.10 Students are responsible for informing themselves of examination dates, times and venues. This includes responsibility for routinely checking for timetable amendments and making enquiries if they think there are any errors or omissions (for example, incorrect module registration) (*Academic Regulations*, 3.13).
- 4.11 Forgery of an examination timetable is an assessment offence (*Academic Regulations*, 3.14).

Clashes

- 4.12 QMUL completes a detailed examination scheduling process using data from individual records in the SIS; examination clashes are therefore rare. However, where clashes are unavoidable, affected students shall sit both examinations on the same day and be quarantined during the interim period (*Academic Regulations*, 3.15). Quarantine arrangements are the responsibility of the academic school or institute.

Invigilation arrangements

- 4.13 All examinations are monitored by invigilators. Invigilators are paid members of staff who are hired for the role and given professional training. Staff and students from academic schools and institutes may not act as invigilators. The prescribed ratio is one invigilator to 50 students, including one senior invigilator for each venue (*Academic Regulations*, 3.16). The senior invigilator is ultimately in control of the conduct of the examination. QMUL's Chief Invigilator is the Deputy Academic Registrar (Academic Registry).
- 4.14 An internal examiner must normally be present for the first 30 minutes of each invigilated examination to provide any clarifications needed through the senior invigilator. Where no internal examiner is present (including after the first 30 minutes), students must log queries on Student Report Forms, which shall be attached to their answer scripts. Senior invigilators shall also note any queries in their reports. The clarification of examination questions shall be limited to the correction of misprints or typographical errors, and shall be announced to all students. See also *Academic Regulations*, 3.17-18.
- 4.15 Separate invigilation arrangements may apply for examinations in the School of Medicine and Dentistry.

Problems with examinations

- 4.16 SEB Chairs and examiners shall be notified of problems with examinations through invigilators' reports (*Academic Regulations*, 3.19); more details are provided below.

Emergency evacuations

- 4.17 In the event of an emergency evacuation, the intention is always to resume the examination. Students shall be kept under examination conditions (silence, and no consultation of unauthorised materials) by the invigilators and Registry staff, and question papers and answer scripts shall be locked in the room by the senior invigilator. Where disruptions last longer than 15 minutes, or where 25 percent or less of the examination duration remains, examinations shall be abandoned. The Chief Invigilator shall rule on whether examinations should be abandoned or resumed (*Academic Regulations*, 3.49-3.50).
- 4.18 When examinations are abandoned, this shall affect only those students whose venue was abandoned. If a cohort is split between two venues and only one is affected, the scripts of the students in the unaffected room will stand. The SEB must make allowance for the fact that not all students in a cohort took the same examination in these instances.

Suspected examination offences

- 4.19 Details of alleged examination offences shall be included in invigilators' reports. These shall be provided to SEBs for information only, as the resulting investigations shall be conducted by the Academic Secretariat (ACCCE Unit).
- 4.20 Where examiners suspect that offences have been committed but not detected during the examination, they shall inform their SEB Chair. The SEB Chair shall return the script, with a report, to the Academic Secretariat (ACCCE Unit) for further investigation.

Invigilator and student reports

- 4.21 Senior invigilators shall be instructed to make reports on each examination. These reports shall be sent to the relevant SEB chair as soon as possible after the examination. The reports note any problems that arose in the conduct of the examination and with the question paper. Students shall have the opportunity to raise any concerns through a report to the examiner on a standard form (*Academic Regulations*, 3.19), available from the invigilator. Once completed, such forms shall be included with the relevant student's answer script.

Consideration of reports by Subject Examination Boards

- 4.22 Each SEB shall receive invigilators' reports for its examinations. These reports shall note where issues arose in examinations and the nature of those issues, and also where examinations ran smoothly. SEBs shall note the reports and agree actions where required (*Academic Regulations*, 1.29ii). SEBs shall also note any individual student reports, and agree any actions to be taken by examiners in response.
- 4.23 The appropriate actions for SEBs to take in response to invigilator and student reports will vary depending on the situation; these may include discounting one or more questions where these are deemed invalid. It is paramount that SEBs ensure that all students are treated equitably, and that all marks awarded are true reflections of achievement. Marks cannot be awarded in compensation for problems with examination questions, though such issues can be taken into account when calculating marks; all such actions must be included in the SEB's report to the DEB.

Archiving examination scripts

- 4.24 Answer scripts, absence forms, attendance sheets, and a final set of marks for each module shall be stored in labelled boxes, arranged by module and then by Student Identity Number. Schools and institutes shall retain scripts for around four weeks

after results have been released by Registry to allow for any administrative checks, and to provide feedback; this may be requested by students, or by the Academic Secretariat as part of an academic appeal case. After this time, schools and institutes must make arrangements for boxes of scripts to be delivered to Registry. These boxes shall be archived and kept for one calendar year from the date of the examination.

5. Marks and Marking

General

- 5.1 It is strongly recommended that the *Code of Practice on Assessment and Feedback* (Appendix B) be read alongside this section.

Marking schemes

- 5.2 Each element of assessment shall have a marking scheme or set of assessment criteria that can be provided to other examiners, including external examiners. For examinations, these shall be the solutions that are prepared at the same time as the question paper. Marking schemes shall be written in relation to the learning outcomes for individual elements of assessment, and shall make clear what is being assessed and what is expected of students. It is the responsibility of Head of Schools and Institutes (or nominees) to ensure that marking schemes are in place for each element of assessment. Marking schemes and assessment criteria are important to the clear articulation and management of academic standards.
- 5.3 Every element of assessment must be tied to specific learning outcomes for the associated module. The marking scheme for the assessment should likewise measure the learning outcomes, though where intended learning outcomes are 'generic', the assessment marking schema may likewise be generic). The most commonly used marking scheme/systems are criterion referencing, model answers, and skeleton answers. QMUL recognises the need for variations in practice in the use of marking schemes to take account of discipline based differences.
- 5.4 It is imperative that SEBs make certain that the marks awarded are accurate reflections of achievement (and only of achievement: never potential). Award classification, where used, shall be based upon the 'College Mark'. The College Mark is the final, weighted and calculated mark for a programme; it combines all module marks achieved by a student (save 'transcriptable' and 'study only' modules). Ensuring that assessment and module marks are correct ensures that final classifications are appropriate for the level of attainment.
- 5.5 Further guidance on the design of learning outcomes and marking schemes is available online: www.learninginstitute.qmul.ac.uk/lta

Code of Practice on Double Marking and Moderation (*quality assuring marking*)

Preliminary

- 5.6 QMUL permits the use of five alternative methods in marking and assessment, to take account of disciplinary based differences and the requirements of individual examination boards. However, there is an underlying principle common to all five approaches: 50 percent of the assessment for each module must be double marked or moderated.
- 5.7 The primary function of double marking and moderation is as a quality assurance process, to confirm the standard of marking. This ensures that assessments have been considered thoroughly, conscientiously and objectively, and that the method of assessment complies with the marking scheme approved by the examination board.

Underlying principles applicable to all methods

The 50 percent rule

A minimum 50 percent of the assessment for each module must be subjected to one of the five approved mechanisms detailed below to assure standards in marking.

- 5.8 This is 50 percent of the elements of assessment, not 50 percent of the students or 50 percent of the content for each element of assessment. For example, where a module comprises an examination (60 percent) and an essay (40 percent), the examination would have to be double marked/moderated. The board would also have the option of double marking/moderating the essay.
- 5.9 Where blind double marking, open double marking, or mark checking are employed, the second marker must double mark the full work of all students taking the assessment. Where moderation is employed the moderator shall sample the assessments of the designated percentage of students (as a minimum). Where electronic marking is employed, item analysis shall be applied.
- 5.10 Where two (or more) elements of assessment will be subjected to the process, the same method does not have to be used for both elements.

The five methods

- 5.11 Having established which elements of assessment will be subjected to the quality assurance procedures, the examination board shall select and apply a means of double marking or moderation from the following options:
- i. Blind double marking
 - ii. Open double marking
 - iii. Mark checking
 - iv. Moderation
 - v. Electronic marking
- 5.12 Where one element of assessment comprises more than one type of assessment (for example, an examination with both short answer and essay based questions), more than one of the five methods may be applied.

Examinations

- 5.13 All examinations (all assessments coded EXM in the SIS) must be subjected to one of the five quality assurance methods, irrespective of their weightings within a module. These count toward the minimum 50 percent of the module assessment to be double marked/moderated.

Dissertations and projects

- 5.14 Dissertations and project reports must be double marked, using models A or B (blind or open double marking; models C, D and E are not available for these assessment types. This is principally due to the differences between individual dissertations and projects; they are on wide ranging topics, and frequently employ large pools of markers when compared to other modules. Therefore, moderating a sample would not guarantee that the same level of scrutiny had been applied across the piece, as it would for other types of assessment.

A: Blind double marking

- 5.15 Independent assessment of the piece of work by two markers, where neither sees the comments or marks of the other until the whole procedure has been completed.

B: Open double marking

- 5.16 Assessment of the work by two markers, where the second marker is able to see the comments and marks made by the first marker.

C: Mark checking

- 5.17 In disciplines that have a detailed marking scheme that allows little or no discretion to the examiner, the second examiner checks that all sections of the piece of work have been marked, and that the marks have been correctly totalled.

D: Moderation

- 5.18 Note: The requirements below constitute a minimum level of moderation that must be carried out, where moderation is used. In addition, where specifically agreed by a Subject Examination Board (SEB), moderators may complete tasks such as (for example) reviewing all borderline marks (this cannot be limited to those in the sample), where clear criteria are approved by an SEB for the purpose.
- 5.19 Where moderation is employed, a defined minimum percentage of the students' assessments (within the 50 percent element of assessment rule) are reviewed by a second individual, the moderator. The full spread of marks for all students in the cohort shall normally be made available to the moderator.
- 5.20 The moderator does not have the power to change individual marks when reviewing a sample, as this would be unfair to the students not included in the sample. Instead, the moderator may:
- i. approve the marking for the assessment, for all students;
 - ii. approve the quality of the marking, but deem it either too lenient or too stringent across the cohort in the marks awarded, recommending that marks for the entire cohort be either raised or lowered by an appropriate amount;
 - iii. approve the quality of the marking for part of the cohort, but deem that the full range of marks has not been used effectively, recommending that marks falling within certain affected range(s) be either raised or lowered by an appropriate amount;
 - iv. reject the marking as unsound, requiring second marking of the full set of assessments by an experienced and independent marker with appropriate subject knowledge.
- 5.21 The moderated marks shall be presented to the Subject Examination Board, and shall always include explanations for any rescaling or other processes that are applied. Where marks are scaled, this may be either by a percentage or by a set number of marks, depending on the case under consideration; the reasoning behind the choice shall be included in the details presented to the Subject Examination Board and the external examiners.
- 5.22 Moderation outcomes may be applied by question or by paper. Where different questions in a paper are marked by different individuals, it may be that only one question requires scaling or remarking. In that situation, all answers to the affected question shall be considered for scaling/a remark. Where an entire paper is marked by a single marker, it shall normally be the total mark for the paper that shall be considered for scaling/a remark, unless there is a clear reason for targeting an individual question.

- 5.23 The percentage to be moderated (sample size) shall be dependent upon the nature of the assessment, and determined by the table below. However:
- there shall always be a minimum sample of ten students; and,
 - numbers in samples shall be rounded up – to the next whole number.

| Minimum sample | Assessment types |
|--|---|
| 10 percent of the cohort (or ten students, whichever is greater) | Examinations, coursework, practical assessment or professional capability assessments with short-answer questions or detailed marking schemes that allow little or no discretion to the marker. |
| 25 percent of the cohort (or ten students, whichever is greater) | Examinations, coursework, practical assessment or professional capability assessments that do not have short-answer questions or detailed marking schemes allowing little or no discretion to the marker (notably including essay-based and discursive assessments). |
| Moderation not permitted | <ul style="list-style-type: none"> • Dissertations and projects • Oral examinations • Any assessment with a cohort of <10 students |

- 5.24 The sample shall include assessments from across the range of performance, where possible taking equal numbers from each decile/quartile (as determined by the sample size).

E: Electronic marking

- 5.25 All results of electronically marked assessments shall be checked for item difficulty and discrimination, and any items that do not perform correctly shall be checked. All student data shall be checked for missing data points and these shall be checked against the original forms. Forms from students with anomalously low scores shall be checked against the original mark-sheets.

Resolving differences between markers

- 5.26 Where models A, B, or C are used, disagreements may arise between markers in relation to individual students' submissions. Where this is the case:
1. The markers shall attempt to resolve the difference through discussion, and to agree upon a mark.
 2. Where the markers fail to agree upon a mark:
 - i. *Where the difference is of ten percent of the total marks available or fewer:* The markers may split the difference, rounding to the nearest whole number.
 - ii. *Where the difference is greater than ten percent of the total marks available, or the markers do not wish to split the difference:* The assessment shall be marked for a third time, and that third mark shall stand. The third marker shall review the marking trails of the first two markers when deciding upon a mark.
- 5.27 The third marker shall be an independent and experienced marker with appropriate subject experience; this shall normally be a member of QMUL staff, but may be an external examiner (by specific agreement with the external, as this is not part of their core responsibilities).

Marking trails

- 5.28 Examination boards must ensure that there is a clear marking trail of comments and notes that can be followed by readers (notably external examiners). The first and second marker/moderator must use either ink or paper of differing colours to ensure that this is the case. Where assessments are marked using an electronic application (including the Online Learning Environment), differing font colours or an alternative means of making the markers' input clearly identifiable must be employed.
- 5.29 Markers must give both the total marks for the assessment as well as the breakdown of marks by section on the cover sheet (or equivalent alternative).
- 5.30 Double marking is a process by which two examiners separately mark a single element of assessment. QMUL operates four modes of double marking: blind, open, mark-checking, and electronic.
- end of Code of Practice on Double Marking and Moderation -
- 5.31 When double marking, at least one member of a double marking pairing must be a member of QMUL's academic staff, though the first marker may be an assistant examiner.
- 5.32 Different arrangements are in place for the MBBS programme, and only short answer question scripts from resit examinations are double marked.
- 5.33 Double marking is an important mechanism through which QMUL manages and demonstrates its academic standards. Each SEB must ensure that there is sufficient evidence of double marking for both external examiners and auditing purposes.

In-course assessment

- 5.34 Where modules are assessed wholly by in-course assessment, the elements selected for double marking must be the same for all students, insofar as this is practicable. Where assessment is based upon a number of in-course submissions (for example, the best three of four essays), the elements for double marking must be drawn from those that will contribute to the module mark.

Reporting

- 5.35 SEBs shall summarise the procedures used to monitor the standard of marking in reports to DEBs, and shall outline the SEBs' conclusions on the standard of marking for the session.

Students who answer too many examination questions

- 5.36 Where a student answers more questions than required by an examination rubric, the marker(s) shall mark the first x question marks in the calculation of the total mark for the script (where x is the number of questions specified in the rubric). Answers given beyond the first x shall not be marked.

Students who exceed a specified word limit

- 5.37 Where a School/Institute wishes to impose a penalty for exceeding specified word limits in assignments, it shall approve a penalty policy (via its Learning and Teaching Committee), and publicise this clearly to students alongside the specified word limit in each module information pack. Where the penalty is not clearly advertised in advance, SEBs shall be unable to apply the penalty. Where guidance word counts are used and there is no desire to impose penalties, there is no need to do so.

5.38 It is strongly recommended that a single policy per School/Institute be adopted, but where a School/Institute has multiple SEBs it may impose a different penalty for each SEB. There shall not, however, be different penalties for different modules under the same SEB (though there may be some assignments that only have guidance word counts, with no penalty at all).

5.39 Where the policy is that the marker(s) will not mark beyond the word limit, the point at which marking ceased shall be marked on the assignment.

5.40 Marking assessments for students with [specific learning disabilities](#) Students with [specific learning disabilities](#) may be granted additional time in invigilated examinations. The time allotted shall be based upon the report of an independent educational psychologist. Scripts of students with [specific learning disabilities](#) shall be identified to markers.

Deleted: dyslexia

Deleted: dyslexia

Deleted: dyslexia

5.41 Examination scripts for students with [specific learning disabilities](#) shall be marked in precisely the same manner as those of other students, save that marks shall not be deducted for poor sentence structure, punctuation, or spelling (unless these are elements being assessed by the examination).

Deleted: dyslexia

5.42 SEBs shall detail how the scripts of students with [specific learning disabilities](#) have been marked in the report to the DEB.

Deleted: dyslexia

5.43 **Late diagnosis of a specific learning disability** Where a student is diagnosed with [a specific learning disability](#) after the commencement of their studies, the following arrangements shall apply. Any marks that have already been approved by an examination board (including all work from previous years of study) shall stand. Any work from the present academic year that has not yet been through a board shall be re-marked – as specified above – with the condition in mind.

Deleted: dyslexia

Deleted: dyslexia (or a related condition)

5.44 Where a student received a late diagnosis of [a specific learning disability](#) and a significant proportion of marks had already been approved by a board, SEBs may choose to include this as a factor when considering candidates for the application of discretion in the same way that they would with extenuating circumstances not taken into account elsewhere (though note that [a specific learning disability](#) is *not* an extenuating circumstance). In such cases, students must already have a College Mark that falls within the zone of consideration before [the specific learning disability](#) is considered as a factor.

Deleted: dyslexia

Deleted: dyslexia

Deleted: dyslexia

Anonymous marking

5.45 All examination scripts must be marked anonymously; the only identifier shall be the Student Identity Number, issued to each student when they enrol with QMUL. This number can be found on the student identity card. The MBBS programme shall continue to use old-style Candidate Numbers for technical reasons associated with mark-reading software.

5.46 In-course assessments shall be marked anonymously by Student Identity Number wherever practicable. QMUL recognises that this is not always possible.

Collaborative programmes

5.47 When QMUL enters into collaborative agreements with other institutions, it accepts the marking standards and quality assurance procedures of those institutions. The regulations for the lead institution shall normally apply for the whole programme.

Differences in pass marks and grade boundaries can therefore occur, especially with overseas institutions. It is sometimes necessary to apply a mark scaling process, though this cannot be employed without approval. Further advice may be sought from the Academic Secretariat.

Designation and preparation of marks

Responsibilities

5.48 Heads of Schools and Institutes are ultimately responsible for marking processes, though SEB chairs have a particular role in overseeing the generation of marks from the Student Information System for the SEB; the actual generation shall normally be carried out by the Secretary.

Calculation of marks

5.49 When marking an assignment, markers should mark to integers. Students should not normally receive a mark with a decimal point for an individual element of assessment (see 'Resolving differences between markers' in the *Code of Practice on Double Marking and Moderation* for details of how to avoid this in those circumstances).

5.50 **Module** marks (and the College Mark) are held to one decimal place. Therefore marks are not rounded to the next integer (for example, 49.5 is not rounded to 50.0) unless, exceptionally, this has been explicitly agreed in the regulations for a named programme (such as the MBBS). Marks are held in the background in the Student Information System to two decimal places, so some minor automatic rounding may occur at lower levels, for example from 49.95 to 50.00.

5.51 Minimising the use of rounding ensures that marks are accurate reflections of student achievement, and only of achievement.

5.52 Module pass marks are determined by the academic levels of modules. In some instances, multiple versions of a module may operate at different levels.

5.53 Markers shall give a breakdown of marks by question on cover sheets (or equivalent) for examinations, to allow internal and external examiners to follow the pattern of marking. This does not necessarily need to extend to sub-questions.

Designation of marks

5.54 The following terminology shall be used for marks at the designated stages:

- i. Provisional (or actual): Provisional marks are those that are recommended by internal examiners, and are subject to change before SEB meetings.
- ii. Final (or agreed): Final marks are those that are agreed by SEBs and/or DEBs, and shall not be subject to further changes save in cases of administrative error or successful academic appeal. Module marks become final following SEBs, whereas College marks become final following DEBs.

Designation of awards

5.55 The following terminology shall be used for awards at the designated stages:

- i. Recommended (or provisional): Recommended or provisional awards are those that are recommended by SEBs, and are subject to DEB approval.

- ii. Final (or confirmed): Final or confirmed awards are those that are agreed by DEBs, and shall not be subject to further changes save in cases of administrative error or successful academic appeal.

Submission of marks and subsequent changes

- 5.56 Provisional assessment marks shall be entered into the Student Information System as soon as possible; there is no need to wait for the results of moderation by external examiners. This shall normally be within a few days of the end of the examination period (though provisional in-course assessment marks can be entered earlier, throughout the academic year). The deadline for uploading marks is specified in the 'Key dates' section of the *Assessment Handbook*.
- 5.57 SEBs are likely to consider students taking modules from the domains of other boards, and early entry of marks enables other SEBs to run smoothly by granting time for the respective chairs to identify any issues and discuss possible solutions.
- 5.58 Once SEBs have confirmed assessment and module marks, any changes to marks shall be submitted immediately by staff with 'supervisor' access to the SIS. Any certified absences shall also be submitted at this time, using the codes '0 NA' (extenuating circumstances accepted), '0 NR' (extenuating circumstances rejected), or '0 EH' (extenuating circumstances awaiting outcome). When using the EH code, be sure to update it as soon as the outcome is known. Further details on extenuating circumstances may be found in Section 9 of the *Assessment Handbook*.
- 5.59 Once the confirmed marks and certified absence details from SEBs have been entered, Registry shall lock down marks for consideration by DEBs. Schools and institutes cannot modify marks after this point. The date of lockdown is specified in the 'Key dates' section of the *Assessment Handbook*.
- 5.60** Changes to individual marks after a DEB has met shall be approved only with completed Chair's Action memoranda, which shall be sent to the Assistant Academic Registrar (Student Records), who is authorised to action these changes. The memoranda shall be copied to the Assistant Academic Registrar (Assessment Governance).
- #### Publication of marks and awards
- 5.61 Students are entitled to receive marks for individual elements of assessment, as well as aggregated module marks. This approach was agreed by Senate, and complies with the Data Protection Act. The release of these marks provides helpful feedback on performance.
- 5.62 The term 'marks' refers only to numerical marks; not to grades or classifications.
- 5.63 Mark and award details may be disclosed to students at each of the following stages: provisional, recommended (applies to awards only), and final. It *must* be made clear to students that provisional and recommended decisions are subject to further ratification, and may change. SEBs may also release marks to students before DEBs, though again it must be made clear that these are not final marks.
- 5.64 Provisional marks for in-course assessments shall be provided with the returned original work, where practicable. The intention of returning submissions to students with marks is to create learning and development opportunities from the assessment.

- 5.65 Students are entitled to know the marks for examinations, but they are not entitled to receive their examination scripts; examiners shall not release these (though with permission from the SEB, a student may view a script under supervision). Examiners may discuss examination results with students on an individual basis, and this is strongly encouraged where students raise queries after the release of marks (this has a significant impact in reducing numbers of academic appeals).
- 5.66 Marks and comments on examination scripts are deemed 'personal data' under the Data Protection Act. Students may make subject access requests to see this information, though there is only a right of access for comments and marks – not actual scripts.
- 5.67 Module marks may be published, but this must be done anonymously. Assessment results are deemed 'personal data', and their publication where individuals can be identified is potentially in breach of the Data Protection Act.
- 5.68 Students are able to view agreed marks for modules and assessments in MySIS (<https://mysis.qmul.ac.uk>) after the examination boards. Marks for individual elements of assessment become visible in MySIS throughout the year as they are entered, though these are provisional and are clearly marked as such. The OLE and QMUL email may also be used to publish marks without a potential breach of the Data Protection Act, but these systems must be used cautiously (ensuring that the correct marks are released). Publication of anonymous lists to provide marks is acceptable, but students must be notified of this, and individual students' data must be removed on request.
- 5.69 Marks cannot be released to students with tuition fee debts to QMUL. The student view of marks in MySIS is blocked for debtors. Further information on debtors is provided in Section 10 of the *Assessment Handbook*.
- 5.70 The transcripts issued by Registry are the official publications of approved module results and awards. Transcripts are not issued until after DEBs have met.
- 5.71 Publication of degree classifications does not need to be anonymous. Any publication of classifications made before the DEB has met to approve recommended awards must be clearly marked as provisional. It is recommended that discretion not be included in such lists, in case it is refused at the DEB.
- 5.72 Examination board business is strictly confidential. Members must never speak to students about their performances in detail, or provide students with results that have not been agreed by the SEB and supplied through the official channels. This does not preclude the discussion of where students' performances were unsatisfactory, or could be improved, in general terms. Further information on confidentiality is provided in Section 6 of the *Assessment Handbook*.
- 5.73 The examination board as a body agrees the marks awarded to students. Members must never undermine a board's authority by commenting to students on the role of particular board members or other individuals in the marking process. The official record of an examination board is provided in its minutes.

6. Subject and Degree Examination Boards

General

6.1 Examination boards act on behalf of Senate in assessing students, and in recommending and approving awards. QMUL operates a two-tiered system of examination boards: Subject Examination Boards exist at disciplinary level, and report to Degree Examination Boards, at award level.

6.2 *Subject Examination Boards* (SEBs) consider and can approve marks and progression, can agree failure and award resits, and can approve extenuating circumstances claims. SEBs make recommendations for awards, first takes/retakes, and suspension of regulations. The terms of reference for the SEBs are as follows (*Academic Regulations*, 1.29):

Deleted: 28

- i. to take an overview of the assessment processes that operate for the programmes and modules in the subject area, with a particular view to ensuring fairness and impartiality, including: setting examination papers, essay titles, and other assessment tasks, marking processes (including double marking), application of regulations, and the conduct of oral examinations (where used as part of the approved module assessment);
- ii. to receive reports from invigilators and students on examinations, and to consider appropriate actions in the light of such reports;
- iii. to agree the results of students in individual assessments and modules;
- iv. to consider claims of extenuating circumstances and, where valid, to approve any proposed actions to be taken;
- v. to make recommendations to the DEB for results to be set aside where there are accepted extenuating circumstances;
- vi. to approve the progression of students;
- vii. to approve the progression of students to alternative programmes, if applicable;
- viii. to make recommendations to the DEB for the exclusion of students due to failure;
- ix. to make recommendations to the DEB for award and classification;
- x. to agree actions in the event of failure of a module (including qualified failure) by a student, including resit provisions that may include appropriate alternative assessment arrangements;
- xi. to make recommendations to the DEB for students to retake or first take modules, where applicable;
- xii. to make recommendations to the DEB and to Senate (or its delegated authority) for the suspension of regulations for individuals or groups of students, where applicable;
- xiii. to make recommendations to the DEB for the award titles of individual students, where applicable (pre-2008-09 cohorts only);
- xiv. to exercise discretion, where appropriate and within the permitted scope of any QMUL policy or regulation, in order to agree results or progression and make recommendations for awards and classifications;
- xv. to review statistics on academic performance and to comment upon the performance of cohorts in particular assessments;
- xvi. any other duties delegated to the SEB by the DEB or Senate.

Deleted: (viva voce)

6.3 Each meeting of an examination board is discrete. Boards cannot reverse decisions taken at previous meetings of the same board, excepting cases considered under the *Appeal Regulations*. Boards cannot make decisions that would affect future meetings, except in setting precedents.

Deleted: College

6.4 A small number of examination boards combine the roles of SEB and DEB notably the LLB. These boards can agree marks, awards, and classifications at the same meeting.

Examination board officers

6.5 Each examination board shall have a Chair and a Secretary; these officers are the primary contacts between ARCS and the SEB.

Chair

6.6 SEB Chairs are appointed on the delegated authority of Senate. To appoint a new SEB Chair, the relevant Head of School/Institute should send a short email nominating and endorsing the candidate to the Assessment Governance Administrator, who will seek approval from the appropriate Dean for Taught Programmes (or equivalent). This is an important process that places the authority of Senate behind the Chair.

6.7 Chairs must be experienced members of academic staff, but should not be a serving Head of School/Institute, Dean for Taught Programmes, honorary member of staff, or a programme director for a programme under consideration at the board.

6.8 Chairs are appointed for three year terms, renewable for two terms (six years in total). Renewals should be notified to the Assessment Governance Administrator.

6.9 SEBs are strongly advised to appoint one or more Deputy Chairs, who can take action in the Chair's absence and gain experience of the role for the future. Deputies are appointed in the same way as Chairs, and for the same terms.

6.10 The Chair is responsible for the conduct of the examination board, and for ensuring that the *Academic Regulations* are adhered to (both at the meeting and throughout the year). The Chair is also responsible for the approval of examination papers and the accompanying security arrangements.

6.11 The Chair must complete a Report to the Degree Examination Board after the SEB meeting, summarising all points requiring particular discussion at the DEB (more details below).

6.12 The Chair shall maintain a list of internal and external members of the examination board, and shall ensure that steps are taken to replace members when terms of office end. This may be delegated to the Secretary in practice.

Secretary

6.13 A Secretary shall be appointed by the SEB; there is no formal appointment process, but any changes must be notified to the Assessment Governance Administrator in order to maintain accurate records and mailing lists. The Secretary is not a member of the board, but is always in attendance. The Secretary can be a member of administrative or academic staff.

6.14 The Secretary is responsible for, among other matters, the circulation to members of information on the date, time, and venue of meetings; the production of the agenda; assisting the Chair during meetings; and producing minutes. The generation of results for consideration is normally the responsibility of the Secretary.

6.15 The Secretary shall circulate information on arrangements for the examination board meeting at least two weeks in advance. Most examination boards agree dates for the

next meeting well in advance, but it is helpful to remind members. The agenda shall also be circulated at this point.

- 6.16 More information on the specifics of the Secretary's role is given below, in the section titled 'Servicing examination boards'.

Scheduling SEB meetings

- 6.17 SEB meetings must be scheduled within defined periods specified by ARCS (see the calendar at the start of the *Assessment Handbook* for details. Meetings must not be held outside of these periods, and SEBs will be unable to run accurate board reports or guarantee technical support from ARCS at other times.

- 6.18 Once set, SEB dates should be communicated to the Assessment Governance Administrator for publication online, and to other SEBs where cross-representation is needed.

How many meetings are needed?

- 6.19 The number of full SEB meetings that are required will depend on individual practices. Failure must always be agreed at an SEB before a resit is given, so this is partly informed by whether or not the board operates late summer resits. All meetings must meet the quorum, normally including the presence of at least one external examiner.

- 6.20 Undergraduate boards have a main meeting in June each year, and in most cases there will also be a late summer exam board to agree failure and/or consider progression following late summer resits or first sits, and a board in February to consider module marks for semester one associate students.

- 6.21 Postgraduate boards have a main meeting in October and, in many cases, a progression board in June.

- 6.22 A meeting must be held in February to consider the results of single semester associate students. This is not a full board meeting, and requires attendance only from the SEB Chair, Teaching and Learning Chair, and the associate student coordinator. Minutes should be taken as usual. No direct external examiner involvement is required.

- 6.23 When scheduling a meeting, please ensure that the venue is fit for the purpose. The confidential nature of the meetings requires that boards not be held in venues where discussions may be overheard by students or other individuals. Venues should be booked for a period of time that allows for the meeting to run past its expected end-time if necessary.

Preparing for the SEB meeting

Generating reports

- 6.24 When preparing for the SEB meeting, the Chair and Secretary shall ensure that all results have been entered into the Student Information System (SIS), with the module results calculated, by the specified deadline.

- 6.25 Once Registry has run the TMR process, the Chair and Secretary will be able to run SEB reports, from the following link: <https://webapps.is.qmul.ac.uk/seb> (guidance is given in Appendix H. A range of reports are available:

- i. Student detail: An individual profile of each student (Word format);
- ii. UG/PG/SMD UG summary: a summary of all students (Excel format). This is generally the main report to be used in decision making;
- iii. Module detail: a breakdown of performance by student on each module (Excel format);
- iv. Module summary: summary information on each module, such as spread of marks, number of students achieving each grade, etc (Excel format).

- 6.26 Reports can be run with names, or anonymously. Unless specific guidance applies for a programme, this decision rests with the SEB. Anonymity is taken into account in the marking stages, so QMUL does not demand that it be used at the SEB.

Review of reports

- 6.27 The Chair shall review the reports, considering students' results and identifying those that might require special discussion or further information. These may include those with borderline marks, those who have taken a number of modules from another SEB's domain, and those making claims for extenuating circumstances.

- 6.28 It is strongly recommended that a preliminary meeting be held before the meeting of an examination board. These informal meetings shall discuss and resolve problems in order to expedite the main meeting. Recommendations to the SEB on fields of study (see below) can be considered at preliminary meetings.

- 6.29 Careful preparation can greatly expedite proceedings, and may include requests for further information and discussions with the chairs of other SEBs. Even where there is cross-representation, the Chair shall consult informally with the chairs of other SEBs concerned. A full list of examination boards and their chairs is provided in Appendix F of the *Assessment Handbook*.

Production and circulation of papers

- 6.30 The agenda shall be drawn up by the Secretary in consultation with the Chair; it shall follow the online template: <http://www.arcs.qmul.ac.uk/quality/examination-boards/index.html>

- 6.31 Mark-sheets and summaries of student performance shall not be circulated with the agenda; these shall normally be tabled at the board. Mark-sheets shall be clearly labelled to indicate which group of students is under discussion.

- 6.32 The Secretary shall also circulate or table any further information that the board requires for its work. This should include, as a minimum, the following:

- i. ~~Assessment Handbook 2014-15~~
- ii. ~~Academic Regulations 2014-15~~
- iii. Programme regulations for all programmes under consideration.
- iv. Approved conventions for the exercise of discretion on classification by the SEB.

Deleted: 2013-14

Deleted: 2013-14

- 6.33 Where regulations have changed recently, copies of the iterations that refer to each cohort under consideration shall be provided, and it shall be made clear at the beginning of the meeting which iteration applies to which cohort of students.

- 6.34 Examination boards may be held using electronic copies of papers. Those using this approach must ensure that all information is provided in a format that is accessible for all members; paper copies shall be provided where required. The security of information before, during, and after the board shall be considered thoroughly.

Sub-boards

6.35 Subject Examination Boards may establish sub-boards to assist in their work. Establishing a sub-board requires the support of Senate and the relevant external examiner(s) (*Academic Regulations*, 1.30). Sub-boards must have clear terms of reference and membership approved by the SEB.

Deleted: 29

6.36 The most common subcommittees are:

i. *Scrutiny Sub-board*: These sub-boards are required, and are tasked with the responsibility for drafting, checking, and proofreading examination papers. This does not remove the requirement for each question paper to be approved by at least one external examiner (*Academic Regulations*, 1.30).

Deleted: 29

ii. *Extenuating Circumstances Sub-board*: These sub-boards are required, and are tasked with the consideration of claims of extenuating circumstances prior to the SEB meeting. The sub-boards shall make recommendations to the SEB on whether claims are valid, and on any actions to be taken. It is strongly recommended that this subcommittee be chaired by a senior member other than the Chair, such as the Senior Tutor. It is advised that these sub-boards only inform SEBs of the specific details of claims where absolutely necessary (*Academic Regulations*, 1.41). A set of confidential minutes should be taken and retained for reference. The main SEB only requires a summary of recommended actions from the sub-board.

Deleted: 40

iii. *Specialist sub-boards*: SEBs with a wide remit may establish subcommittees to give initial consideration to the performance of students within a particular discipline (for example, the disciplinary sub-boards reporting to the UG SLLF, SEMS, WHRI and Blizzard SEBs). Further information may be sought from ARCS.

6.37 Sub-boards are intended to assist examination boards, and not to carry out the work of full boards. Sub-boards cannot agree decisions, and their recommendations shall be subject to ratification by the full examination boards. SEBs may elect to take alternative decisions without recourse to the sub-board.

Running an SEB meeting

6.38 The section below follows the structure of an SEB meeting as set out in the standard agenda. It should be used to inform the running of each meeting

Preliminary items

Quorum

6.39 The SEB must ensure that it meets the quorum before it can proceed with the meeting. If the meeting does not meet the quorum then its decisions are not valid or binding. Where there is exceptionally good reason why a meeting will not meet the quorum, a suspension of regulations may be sought via the Assistant Academic Registrar (Assessment Governance) to make the board's decisions binding. However, this should be sought well in advance of the board, and SEBs are responsible for ensuring that all members attend.

Deleted: must

6.40 The membership of an SEB consists of the Chair, Deputy, external examiners, and internal examiners (the module convenors). The Vice-Principal (Teaching & Learning) may attend any board as a full member, but does not count towards the quorum. Attendance at SEBs is mandatory for members.

6.41 The Secretary, other administrative staff, and any assistant internal examiners are considered to be 'in attendance' at SEBs, as are members of other SEBs acting as cross-representatives where joint programmes exist. The Academic Registrar (or nominee), the Principal, the Faculty Vice-Principal & Executive Dean, and the Faculty Dean for Taught Programmes may also attend any board 'in attendance'. Those in attendance do not take an active part in decision making, but may be involved in all discussions and provide guidance to the boards.

6.42 The quorum of an SEB is 50 percent of the total membership, including the Chair (or Deputy) and at least one external examiner. The total membership will vary according to the number of modules (and hence the number of internal examiners) under consideration at any given meeting.

6.43 Though highly desirable, it is not a fixed requirement for all external examiners to attend an SEB. At least one must be present, but if others are unable to attend the board can proceed provided that absent externals are consulted before the board, that their views are communicated to the board, and the outcomes are reported back to and endorsed by the absent externals after the board.

6.44 The quorum does not apply to preliminary board meetings, or to sub-boards.

Joint honours programmes and cross-representation

6.45 Students registered for joint degree programmes must be considered by a single SEB. Each programme has a lead school or institute, and the SEB associated with that school should be the one to consider students for award and progression decisions. Module results should be considered by the SEB responsible for the module, and the results communicated to the lead SEB for the programme.

6.46 Detailed arrangements shall be discussed between the boards involved, and the Chair of the lead SEB shall ensure that there is cross-representation from the other SEB. Cross-representation should be used where students have taken one third or more of their modules (by credits) from another SEB's domain.

6.47 DEBs have a specific responsibility to ensure that joint programme students are treated fairly and equitably.

Confidentiality

6.48 Once the board has been confirmed as meeting the quorum, the Chair shall note that the business of the meeting is strictly confidential. Discussion of any detail of an examination board meeting is highly irresponsible and undermines the authority of the examination board; this includes detailed discussions of marks and performance with students.

6.49 The Chair should also note the means by which results will be communicated to students. Generally, a statement that these will be made available to students via MySIS on the official release of results date will be sufficient, but if the board will be making supplementary arrangements then those should be noted (see Section 5, *Marks and Marking*, for more detail). Outcomes of the board must not be communicated to students or others through any other channels.

6.50 Any breach of confidentiality may be considered as a disciplinary offence.

Conflicts of interest

6.51 Following the confidentiality statement, the Chair shall invite all of those present to declare any conflicts of interest. Conflicts of interest arise where a chair, member, or attendee of an examination board has a familial or other close relationship with any student under consideration.

- 6.52 Where a conflict of interest is declared at an examination board meeting, this shall be recorded in the minutes by the Secretary and the individual concerned shall take no part in decision-making related to the students concerned.

Debtors

- 6.53 The MySIS-generated SEB reports will indicate where a student is in debt (academic debts only – tuition, library fines, field trip/bench fees, etc). Debtors should be considered as normal at the meeting, but the SEB must not release results to them. When the debt is cleared, a student will be able to view the results in MySIS. The Chair should note the policy of withholding results from debtors.

- 6.54 If the SEB has any queries over a debt then it should contact Finance.

- 6.55 If a debtor comes forward with queries over the Data Protection Act, or seeks to make a Freedom of Information request to access their results then they should be referred to the Records & Information Compliance Manager in ARCS, or online: www.qmul.ac.uk/about/collegeinfo/foi

Minutes of the previous meeting

- 6.56 The minutes of the previous meeting should be considered by the board for accuracy. The board should then either confirm the minutes as an accurate record of proceedings, or confirm them subject to specified changes.

Matters arising from the previous meeting

- 6.57 Typically, there should not be any matters arising from the previous meeting as each meeting of an SEB is discrete, and any outstanding actions should have been resolved by Chair's action. However, if there are exceptions to this rule then this is the point in the meeting at which they should be considered and acted upon.

Report of Chair's action

- 6.58 A report of all Chair's actions taken since the previous meeting should be available to the board. These should be recorded (in summary form) at the end of the minutes of the previous meeting. There is no need for an oral report or for discussion unless the board members have any queries.

Regulations and discretion conventions

- 6.59 The Chair should confirm that the board has complied with the *Academic Regulations*, and note details of the regulations that apply to the programme – especially any special regulations. Where standard regulations apply it is sufficient to state that (for example) the standard BA progression and award regulations will be used. It can be helpful to give some details of the regulations for external examiners and new board members.

- 6.60 The Chair should also explain the discretion procedures used by the board. More details on discretion are given later in this section of the *Assessment Handbook*.

Consideration of module results

Report on the monitoring of marking practices

- 6.61 The next section of the meeting looks at results in individual modules. The Chair should open the section by detailing the marking practices used by the board, and in particular confirming that the *Code of Practice on Double Marking and Moderation* was followed.

Invigilator and candidate reports

- 6.62 The Chair should then present for discussion any invigilator or candidate reports that have been received, giving details of events in the examinations, including alleged irregularities. Where the board determines that there has been an actual irregularity that may have had an impact on an examination, action shall be taken to remedy the problem, and details shall be recorded in the minutes.

Module results and internal examiners' comments

- 6.63 Finally, and most significantly, the board should look at performance in individual modules. Each module convenor shall give a brief oral report on how things have gone, commenting in particular on any irregularities, the general level of performance (and whether it is broadly in line with the same module in past years, and other modules in the current year), and whether changes may be required to the module for future years. The board shall consider the module marks for approval, taking action to address any outstanding issues where necessary.

Consideration of student results

Outstanding investigations into assessment offences

- 6.64 The Chair should begin this section of the meeting by identifying candidates who are under investigation for alleged assessment offences. The board cannot consider these candidates at all, and they must be dealt with by Chair's action once the allegation has been resolved. Even if the allegation only pertains to one module, the penalty may affect all modules.

Pre-final year performance and progression

- 6.65 The board should then consider the progression of first year students into the second year (or progression to the project for some postgraduate programmes; single-year programmes with no progression point can skip this stage). This process should then be repeated for each subsequent developmental year.

- 6.66 The board shall make recommendations and decisions as follows, paying close attention to individual cases:

- i) approval of progression, where students are eligible;
- ii) approval of first sits, and other EC related decisions;
- iii) approval of resits;
- iv) recommendations for deregistration where students have failed and have no attempts remaining (and recommendations for exit awards where appropriate);
- v) recommendations for first takes and (PG only) retakes;
- vi) recommendations for suspension of regulations.

- 6.67 The board should note and endorse the recommendations of the extenuating circumstances sub-board, and discuss any cases that could not be resolved by the sub-board (see the *Assessment Handbook* chapter on extenuating circumstances for more details). The board should approve the outcomes of the recommendations; this can be done implicitly in straightforward cases such as first sits, but some cases, notably recommendations for first takes (reattempting the year with full teaching) must be presented to the Degree Examination Board for authorisation.

Final year performance and award recommendations

- 6.68 The board should next consider the performance of final year students. Please note that there are considerable variations between the rules for individual awards, and that boards should refer closely to the *Academic Regulations* (Sections 4 and 5), as well as to the *Assessment Handbook*. Remember that where Special Regulations have been approved, these override the standard award regulations.

- 6.69 The board shall make recommendations and decisions as follows, paying close attention to individual cases:
- recommendations for award, where students are eligible (including exit awards);
 - recommendations for discretion (see below);
 - recommendations for field of study (see below);
 - recommendations for suspension of regulations;
 - recommendations for application of unusual regulations (notably, discounting modules due to extenuating circumstances, deferral of classification, and recommendations for EC pass degrees and aegrotats – these recommendations are only permissible where strictly defined criteria have been met, and not all of these are possible for all programmes);
 - recommendations for first takes and (PG only) retakes;
 - recommendations for deregistration where students have failed and have no approval of first sits, and other EC related decisions;
 - approval of resits.
- 6.70 The board should note and endorse the recommendations of the extenuating circumstances sub-board, and discuss any cases that could not be resolved by the sub-board (see the *Assessment Handbook* chapter on extenuating circumstances for more details). The board should approve the outcomes of the recommendations; this can be done implicitly in straightforward cases such as first sits, but some cases, notably recommendations for first takes (reattempting the year with full teaching) must be presented to the Degree Examination Board for authorisation.

6.71 Extenuating circumstances not taken into account elsewhere may be a factor in classification. This may form part of an individual board's approved discretion conventions, and for some undergraduate programmes a board may recommend discounting a limited number of credits with outstanding certified absences, or deferring classification pending first sits (see *Academic Regulations*, 3.89).

Advanced standing in classification

6.72 Marks achieved at other institutions shall not be included in the calculation of the College Mark. Instead, a truncated weighting shall be used, which simply removes the year that will not count; for example, 1:3:6 becomes 3:6.

Discretion

- 6.73 SEBs have a certain degree of flexibility in applying certain regulations, for example:
- SEBs may choose to recommend the award of a higher classification of degree where the College Mark is marginally below the required threshold, within strict conditions (see below);
 - SEBs may choose to permit progression where an undergraduate student missed meeting the progression requirements by 15 credits or less, where there are attempts remaining at some modules. (*Academic Regulations*, 4.68). This is not possible for some programmes, where students must pass all requirements to progress.
 - SEBs may choose to condone failure in up to 30 credits of modules for most postgraduate students, where students achieve marks of 30.0 in the failed module and 50.0 across all modules (*Academic Regulations*, 5.27). The required marks vary for some programmes on special regulations.

Deleted: 2
Deleted: 4
Deleted: 2
Deleted: 4

6.74 It shall be noted that each situation is dependent upon the SEB's judgement in respect of the specific situation under consideration. Discretion shall never be used as an automatic response, as this would in effect lower QMUL's requirements for award, including lowering the classification boundaries.

Discretion in classification

- 6.75 Discretion in classification can be used to award a higher classification than that indicated by a student's College Mark where strict criteria are met and the SEB agrees, with collective academic judgement, that the higher classification is more reflective of the student's overall performance.
- 6.76 There is no discretion at the pass/fail border, as this is a minimum standard of achievement for award. However, the board should look carefully at the marks for these borderline students to ensure that it is fully confident in them.
- 6.77 Discretion shall never be used to lower the classification of a student once the individual module marks have been agreed.
- 6.78 The use and consideration of discretion shall always be recorded clearly in the minutes of the board, with a rationale for the decision. All students in the zones of consideration should be discussed; the minutes will then give an accurate record of discussions, which is important as the decision may need to be defended on academic grounds in the event that a student lodges an academic appeal. The views of external examiners are particularly important in such cases; these shall be sought and recorded in the minutes where discretion is applied, along with their agreement.
- 6.79 As with all award decisions, decisions on discretion are presented as recommendations from the SEB, and are subject to approval from the DEB.

Undergraduate

6.80 QMUL has a formal policy on discretion for the award of higher classes of degree for borderline cases for undergraduate awards that classify on the First, 2:1, 2:2, Third, Pass scale (those that classify as Distinction/Pass/Merit should use the postgraduate approach). The QMUL policy is an overarching framework, and shall always be used in conjunction with a detailed set of criteria specific to the SEB, which shall be approved by the DEB. Discretion outside of these bounds would require suspension of the *Academic Regulations* (4.55). The permissible zones of consideration for undergraduate discretion are as follows:

Students commencing in 2013/14 or later, being classified in 2014/15:

Deleted: their programme

| Upgrade from | Upgrade to | Discretion zone |
|------------------------------|------------------------------|-----------------|
| Second Class, Upper Division | First Class | 2% |
| Second Class, Lower Division | Second Class, Upper Division | 2% |
| Third Class | Second Class, Lower Division | 2% |

Students commencing in 2012/13 and earlier, being classified in 2014/15:

Deleted: their programme

| Upgrade from | Upgrade to | Discretion zone |
|------------------------------|------------------------------|-----------------|
| Second Class, Upper Division | First Class | 2% |
| Second Class, Lower Division | Second Class, Upper Division | 2% |
| Third Class | Second Class, Lower Division | 1% |
| Pass Degree | Third Class | 1% |

- Postgraduate**
- 6.81 QMUL recommends that a zone of consideration of one percent from each border be used for postgraduate programmes, and for undergraduate programmes classified on the Distinction, Merit, Pass scale. The QMUL policy is an overarching framework, and shall always be used in conjunction with a detailed set of criteria specific to the SEB, which shall be approved by the DEB. Discretion outside of these bounds would require suspension of the *Academic Regulations* (5.56), and this will not normally be granted. The permissible zones of consideration for postgraduate (and UG as detailed) discretion are as follows:

| Upgrade from | Upgrade to | Discretion zone |
|--------------|-------------|-----------------|
| Merit | Distinction | 1% |
| Pass | Merit | 1% |

- Field of study**
- 6.82 SEBs may need to consider the recommended field of study when making decisions on classification and award.
- 6.83 Fields of study are the approved titles of awards made to students, and are based upon the modules taken and completed as part of a programme/pathway. QMUL now operates a system under which fields of study are determined by programme titles, and these are therefore agreed when students register for their programmes. Further information may be found in the Queen Mary Academic Credit Framework, which is available online: <http://www.arcs.qmul.ac.uk/policy/index.html>
- 6.84 The fields of study of students who enrolled in September 2007 or earlier are not necessarily determined by programme titles. These fields of study shall be calculated by the board; they shall include a maximum of two subjects, specified as follows:
- The conjunction 'and' shall be used where modules in each of the two subjects have been taken in proportions where one subject has no less than eight modules (or one third of the curriculum, whichever is fewer), provided that this includes one or more final year modules.
 - The conjunction 'with' shall be used where modules in the two subjects are taken in differing proportions and the main subject has a minimum of 12 modules, (or one half of the curriculum, whichever is fewer), and the supporting subject has a minimum of six modules (or one-quarter of the curriculum, whichever is fewer), provided that this includes one or more final year modules.

External examiners' reports and other matters

- List of outstanding external examiner reports from the previous year**
- 6.85 The board should note where an external examiner has not submitted a report from the previous year (where they were expected to do so). In such cases, the SEB should remind externals of the need to submit reports. The SEB should consider whether it would be appropriate to terminate a contract where a report has not been received, but this last should be handled outside of the meeting in liaison with ARCS.
- Matters arising/outstanding from previous reports**
- 6.86 The externals and the board should discuss progress made on points raised in the previous set of reports, and any issues that have not been resolved should be flagged, and action agreed where appropriate.

- Oral reports from the external examiners**
- 6.87 The externals should be invited to give short oral reports on their experiences with the board (both at the meeting and throughout the year). These comments should be recorded in the minutes, though it should also be noted that externals submit written reports that go into more detail.
- Authority for the Chair to act on behalf of the board**
- 6.88 The board should then agree to confer authority upon its Chair, to act on its behalf until the next SEB meeting. This conferral of authority should be recorded in the minutes. A log of Chair's actions taken after the meeting should also be maintained throughout the year; it is convenient to maintain this at the end of the minutes, so that they can be noted at the board's next meeting.
- Arrangements for the next meeting**
- 6.89 The board should discuss the details of the next meeting. It is not necessary to set an exact date (though this can be helpful, where possible), but the published windows of time in which SEBs must take place should be noted and adhered to.
- Prizes**
- 6.90 The allocation of prizes, where used, may be discussed either at the end of the consideration of student results or, separately, at the end of the meeting. Prizes are managed by the Bursaries, Grants and Scholarships Office in ARCS.
- 6.91 Schools and institutes shall inform the Bursaries, Grants and Scholarships Office of all prize details (both nominations and awards). These shall be communicated at the earliest possible opportunity, in a separate list from the SEB minutes. The communication must include the following details:
- Student name and Identity Number;
 - Title of the prize;
 - Whether it is a nomination for, or an award of the prize;
 - Amount of prize money to be awarded
 - Whether the prize is funded by the school or institute, QMUL, or an external body.
- 6.92 The Bursaries, Grants and Scholarships Office confirms awards with schools and institutes, and informs students of awards (though not nominations). The Office shall also arrange payments and the production of certificates. Students may collect prizes from the Office, or have them posted to their registered addresses.
- 6.93 Schools and institutes are encouraged to inform students of awards and nominations themselves, rather than awaiting confirmation at the degree ceremonies. Where a student has been nominated but the actual prize has not yet been allocated, this fact shall be made clear in correspondence.
- After the SEB meeting
- 6.94 Immediately after the SEB meeting there are a number of tasks that must be completed within a short timeframe in order to meet the deadlines for the associated DEB. These include:
- Entry to the SIS of any mark changes agreed at the SEB, and recalculation of module marks for affected modules;
 - completion of the SEB minutes (guidance is given below), EC monitoring form and first take/retake forms by the Secretary;

- iii. completion of the report to the DEB by the Chair;
- iv. submission of all of the above to the Assistant Academic Registrar (Assessment Governance), Assistant Academic Registrar (Student Records), and Deputy Academic Registrar (Academic Registry).

6.95 The Assistant Academic Registrar (Assessment Governance) will review submissions, generate DEB reports, and liaise with SEBs to resolve queries during the period between the SEB and the DEB.

Chair's action

6.96 Any SEB decisions taken after the SEB meeting (before and after the DEB) are taken by the Chair alone, as Chair's action. These must be submitted on the Chair's action template (<http://www.arcs.qmul.ac.uk/quality/examination-boards/index.html>) to the Assistant Academic Registrar (Assessment Governance) (for items requiring DEB approval), and Assistant Academic Registrar (Student Records). It is generally helpful to submit all forms to both Registrars.

Servicing examination boards

General

6.97 Examination boards must be properly serviced. Each meeting shall have an agenda, and all decisions shall be formally recorded. Each SEB meeting must also produce a report to the DEB. This expedites the meeting's business, and is also required to:

- i. Provide a clear audit trail should there be a question on the board's decision-making;
- ii. Provide a clear record should there be a challenge to the board's decisions (for example, in case of an academic appeal);
- iii. Enable the board to examine past decisions, and to set and follow precedents.

Minutes

6.98 Minutes must provide a clear summary of the decisions taken at each meeting, and also of the discussions leading to those decisions where this is required to understand the decision or to set a precedent.

6.99 The template for SEB minutes must be used to guide the format of minutes wherever possible. The template is shown in Appendix G of the *Assessment Handbook*, and online: <http://www.arcs.qmul.ac.uk/quality/examination-boards/index.html>

6.100 Secretaries may prefer to type minutes directly into a prepared document using a laptop at the meeting. This may be partially completed before the meeting, where certain information is already known (e.g., apologies for absence).

Style of minutes

6.101 Minutes shall be written in such a way that a person not in attendance at the meeting can follow the decisions made. Minutes will or may be read by a variety of groups external to the board, including other SEB Chairs, ARCS staff, the QAA, and the OIA.

6.102 The following standard conventions shall be used when writing SEB minutes:

- i. All minutes shall be written in the past tense;
- ii. The Board is singular, not plural;
- iii. Begin the minutes with an attendance table, listing:
 - a. members present;
 - b. members who are absent or have sent apologies ;

- c. individuals present 'in attendance' (separately to avoid confusion with members);
- d. Never refer to individuals by name in the actual minutes, and only refer to them by role where it is directly relevant that the role holder made the point (e.g. 'The CLA4001 module organiser noted that failure rates had improved since last year.'). For more generic points, use 'The Board...'.
 - iv. Record student details as follows: SURNAME Forename (ID number). Minutes should not be anonymous.
 - v. Begin each minute with 'The Board **action**... Use the following actions:
 - a. The Board **noted** (information received);
 - b. The Board **received** (documents received);
 - c. The Board **considered** (debate);
 - d. The Board **approved** (decisions taken);
 - e. The Board **recommended** (recommendations to the DEB where the SEB is not empowered to act, e.g. suspension of regulations requests or awards).

Information to be recorded

6.103 Boards are not required to minute decisions in respect of every student; it is standard practice to refer to an attached schedule of marks or pass list ('as detailed in the SIS-generated report'). However, individuals shall be referred to in the following situations:

- i. where a board has considered and/or recommended discretion;
- ii. where a decision of the board is not in accordance with past precedents.
- iii. where there is a request for suspension of regulations.
- iv. where there are extenuating circumstances (if a student requests the review of a board's decisions through an academic appeal, it is important to know whether extenuating circumstances were reported, and if they affected the board's decision).
- v. where the board has exercised its discretion (for example, permitting progression on less than the standard number of credits where this is expressly permitted under the regulations).

6.104 Extenuating circumstances shall be referred to in the minutes, but detail is not required. This ensures that it is clear where circumstances have been considered and taken into account.

6.105 Comments from the external examiners shall be summarised in the minutes, in addition to the separate, written reports from external examiners.

6.106 Minutes shall always be approved by the Chair, with any amendments made, before being released. Once approved by the Chair, a copy shall be sent to each member of the board including the external examiners, and to the Assistant Academic Registrar (Assessment Governance). The Secretary shall retain one copy as part of the SEB records for the year, and may distribute further copies to new external examiners appointed in the following year.

SEB reports to DEBs

6.107 The SEB Chair is responsible for the production of the Report to the DEB. This document is used by ARCS in the production of the DEB reports to ensure that all items requiring specific discussion or approval at the DEB are flagged.

6.108 For programmes other than the LLM, LLB, MBBS and BDS, reports shall be submitted electronically to the Assistant Academic Registrar (Assessment Governance), Assistant Academic Registrar (Student Records), and the Deputy Academic Registrar (Academic Registry) by the prescribed deadline so that they can

be checked, collated, and circulated to members of the DEB. The deadlines are provided in the 'Key dates' section of the *Assessment Handbook*.

- 6.109 Although this is a tight deadline, SEBs must ensure the accuracy of the information provided in order to avoid delays in the decision making processes for awards.
 - 6.110 There may be queries on the content of the Report to the DEB, and SEB chairs and secretaries shall aim to be available for the period of time before the DEB meeting. SEB chairs shall notify the DEB Secretary and Chair of any difficult cases in advance of the meeting.
 - 6.111 The SEB shall provide the following items for the DEB.
 - i. report to the DEB;
 - ii. minutes of the SEB;
 - iii. extenuating circumstances monitoring form;
 - iv. signed retake/first take forms (if any).
 - 6.112 The most recent approved templates for these documents must be used. These templates are shown in the appendices of the *Assessment Handbook*, and online: <http://www.arcs.qmul.ac.uk/quality/examination-boards/index.html>
- Degree Examination Boards
- 6.113 Degree Examination Boards consider and may approve the recommendations made by SEBs for awards, suspension of regulations, and retakes/first takes, and ensure (as far as possible) that academic standards are comparable across all disciplines. DEBs pay special attention to these roles in regard to joint degrees and condoned pass degrees.
 - 6.114 The terms of reference of Degree Examination Boards are:
 - i. to consider and approve recommendations from SEBs on awards and classifications, and fields of study where necessary (pre-2008/09 cohorts only);
 - ii. to consider and approve recommendations from Subject Examination Boards to set aside results affected by accepted extenuating circumstances;
 - iii. to consider and approve recommendations from Subject Examination Boards for the termination of registration and enrolment of students due to academic failure;
 - iv. to exercise discretion - where appropriate, and within the permitted scope of any QMUL policy - in order to agree results, progression and award;
 - v. to pay particular regard to matters of consistency across programmes leading to the same awards;
 - vi. to resolve differences between and within SEBs, where these occur;
 - vii. to consider recommendations for the suspension of regulations, and to make recommendations where appropriate;
 - viii. to consider recommendations for retakes and first takes, and to approve these where appropriate;
 - ix. to ensure the consistent application of the Academic Regulations;
 - x. to monitor the performance of Subject Examination Boards;
 - xi. to consider other matters referred by Senate.
 - 6.115 Where there are reservations concerning any degree recommendation, the DEB shall refer the matter back to the SEB to ensure that comparability between students is maintained. Where the issue concerns a single student, the chairs of the two boards

shall normally settle the matter, consulting with an external examiner if necessary. Where a group or whole cohort of students is affected, the SEB shall be reconvened.

- 6.116 Issues that cannot be resolved at the DEB shall be handled by Chair's action, through the Assistant Academic Registrar (Assessment Governance).
- Academic Regulations
- 6.117 The *Academic Regulations* set out a common set of rules for the management of academic standards, and form the basis of QMUL's contract with its students.
 - 6.118 In publishing the *Academic Regulations* QMUL makes a clear statement on the ways in which it assesses achievement of academic standards and the basis for the conferment of awards. It is therefore paramount that the *Academic Regulations* are followed.
 - 6.119 It is not permissible for boards to create and impose alternative regulations where an examiner (internal or external) disagrees with an element of the *Academic Regulations*. Such actions shall be overturned by the DEB in almost all cases.
 - 6.120 Students may request the review of an examination board decision, through an academic appeal, on the basis that the examinations or the board meetings were not held in accordance with the relevant regulations. This includes both the application of the wrong regulations, and the incorrect application of the proper regulations.
 - 6.121 Advice on the application and interpretation of the *Academic Regulations* must always be sought from the Assistant Academic Registrar (Assessment Governance) or the Assessment Governance Administrator.
- Quick reference guide to examination board authorities
- 6.122 The table below is a quick reference guide showing where authority in decision making lies for examination board processes:

| Action | SEB | DEB |
|---|-----------|-----------------------|
| Marks | Approve | (implicitly endorsed) |
| Failure of assessments/modules | Approve | (implicitly endorsed) |
| Failure of programme | Recommend | Approve |
| Resits | Approve | (implicitly endorsed) |
| Progression | Approve | (implicitly endorsed) |
| Award and classification | Recommend | Approve |
| Discretion in classification | Recommend | Approve |
| Extenuating circumstances claims | Approve | (implicitly endorsed) |
| Extenuating circumstances outcomes (excluding first takes) | Approve | (implicitly endorsed) |
| Discounting modules affected by extenuating circumstances (regulation 3.87ii) | Recommend | Approve |
| Deferring classification pending first sits (regulation 3.87i) | Recommend | Approve |
| First takes/retakes | Recommend | Approve |
| Suspension of regulations | Recommend | Endorse (for VP T&L) |

7. Student Failure and Reassessment

Agreeing failure

- 7.1 SEBs must agree failure of the previous attempt before a reassessment attempt can be granted.
- 7.2 There have been past instances of reattempts awarded prior to SEB meetings. These actions shall in most cases invalidate the original failure, and do not conform to the requirement for collective decision-making at the SEB.
- 7.3 Where students are permitted multiple attempts at tests or other forms of assessment, this shall be clearly specified and a cut-off point established for the agreement of pass or failure.
- 7.4 Where students fail to meet award requirements and have no further attempts remaining, this shall be clearly indicated in the SEB minutes and reflected on the pass-list. These students shall be identified as distinct from those with remaining reassessment opportunities.
- 7.5 It is recommended that all failures shall be subject to a double-checking process by examiners and SEBs, especially where students are awarded a '0 NS' for non-attendance/submission, and in borderline pass/fail cases.

Reassessment

- 7.6 There are two forms of reassessment: resits and retakes. The main difference between the two is that retakes require students to sit the module again (including attendance at lectures, and completion of all assessments), while resits simply require students to reattempt the failed assessment.
- 7.7 The method of reassessment shall be agreed by the SEB (*Academic Regulations*, 1.28.x-xi). However, retakes shall only be awarded when specifically agreed by the DEB, on the recommendation of the SEB.
- 7.8 Students must be informed of the reassessment methods at the start of each module.
- 7.9 Students shall not reattempt modules that they have already passed. The LLB, BDS, and MBBS programmes are exceptions to this rule.
- 7.10 the majority of programmes permit at least one reattempt, though the exact numbers of attempts permitted (including the original attempt) vary as follows:

| Programme | Permitted attempts (inc. original attempt) |
|------------------------------------|--|
| LLB | 4 (pre-2012/13 cohorts) 3 (2012/13 cohort onwards) |
| BDS and MBBS | 2 |
| All other undergraduate programmes | 3 (most pre-2011/12 cohorts) 2 (2011/12 cohort onwards) |
| All postgraduate programmes | 2 |

- 7.11 A small number of programmes have special regulations permitting SEBs to use their discretion to grant one additional attempt. Please refer to the programme regulations.

- 7.12 Students due for a reattempt must register to do so at the next available opportunity (*Academic Regulations*, 2.46). Where students fail to register, or register and fail to complete the reassessment, this shall count as one of the permitted attempts. Students who fail to register must still be considered by the SEB. MBBS and BDS students shall not be required to register for reattempts, as they are required to pass all modules.

- 7.13 The SEB may recommend to the DEB that QMUL should terminate the registration and enrolment of students who fail to reattempt at the next available opportunity. This should be clearly documented in the SEB minutes, the report to the DEB, the pass list, and in the results (*Academic Regulations*, 2.50).

- 7.14 Where students do not register for a reattempt at the next available opportunity, they shall not be permitted to do so at a later point and shall lose all remaining attempts.

Resits

Note: *first sits are discussed in Section 9, Extenuating Circumstances.*

- 7.15 Resits are by far the most common mode of reassessment. Resitting students reattempt assessment from failed modules at the next available opportunity.
- 7.16 Resits incur an examination fee, but no tuition fees; resitting students shall not attend lectures or classes for resit modules. Certain programmes including the MBBS do not currently incur a resit fee.
- 7.17 Each resit shall count as one permitted attempt at a module unless a 'first sit' is agreed (see Section 9 of the *Assessment Handbook*).
- 7.18 Resit marks shall be capped (for the module) at the pass mark for all programmes save the LLB, LLM, and a small number of programmes with special regulations. Resit marks count toward the developmental year in which the module was first attempted, not the year in which the resit occurred.
- 7.19 Each module shall have an approved mode of reassessment, held in the module regulations and the Student Information System:

- i. Synoptic reassessment overrides all elements of reassessment (whether passed or failed) from the original failed attempt at the module with one (or more) mark from a new element of assessment weighted at 100 percent of the module (or adding up to 100 percent).
- ii. Standard reassessment requires students to reattempt only those elements of assessment from a failed module that were failed on the original attempt. The marks from passed elements on the first attempt and from reattempts shall be combined to produce the module mark. Where students fail elements of assessment repeatedly, the mark from the best fail shall stand (rather than the most recent mark) unless special regulations apply. Where students fail individual elements of assessment but still pass the module, no reassessment is permitted.

Timing of resits

- 7.20 The timing of resits shall be determined by the module concerned, rather than by the student reattempting the module or the programme on which they are registered.

- 7.21 Resits shall be taken at the next available opportunity. This opportunity shall be determined by the next available examination period for the programme concerned.
- 7.22 The main examination period takes place in May and June each year. A late summer examination period for non-MBBS and BDS students takes place in August each year before the start of the next academic year; however, not all SEBs offer late summer resits. There is a one week examination period in January, but this is for single semester programmes only, and occurs during what is teaching time for most programmes.
- Undergraduate resits*
- 7.23 Final year undergraduate students (apart from intercalating students) cannot reattempt assessment in the late summer examination period, and shall always resit in the following academic year. The next opportunity for other students shall be determined by the provision of late summer resits for the module, which is in turn determined by the policy of the SEB:

| Provision of late summer reassessment for undergraduate modules 2012-13 | |
|---|--|
| Late summer resits | Modules belonging to schools |
| None (only where students with ECs need <u>first</u> sits to progress) | English and Drama History Politics and International Relations Languages, Linguistics and Film (apart from Foundation and Pre-Masters programmes) |
| First year modules and students only | Engineering and Materials Science (apart from intercalated programmes) Physics and Astronomy |
| First and second year modules and students only | Biological and Chemical Sciences Business and Management Economics and Finance Law Computer Science and Electronic Engineering Mathematical Sciences (and third year MSci) Geography |
| All | Medicine & Dentistry intercalated programmes Engineering & Materials Science intercalated programmes Languages, Linguistics & Film Foundation and Pre-Masters programmes |

- 7.24 Where students take modules from the domain of another SEB, the late summer resit policy shall follow the module, not the student. For example, a first year Economics student taking an English module would resit for Economics in the later summer examination period, but would resit for English in the following academic year.
- MBBS resits*
- 7.25 MBBS students shall resit in the late summer examination period of the same academic year for Parts 1 – 4.
- 7.26 Resits for Part 5 shall normally occur in May or June of the same academic year.
- BDS resits*
- 7.27 BDS students shall resit in July for Part 1, March or April for Parts 2 – 4, and November for Part 5.

- Postgraduate resits*
- 7.28 QMUL offers late summer resits for postgraduate modules on an opt-in basis by SEB. With the exceptions of those SEBs, the next available opportunity for postgraduate students shall be the main examination period in the following academic year.
- 7.29 Late summer reassessment is available for postgraduate modules from the domains of the following:
- Barts Cancer Institute;
 - CCLS: MSc Management of Intellectual Property Law and PG Cert Intellectual Property only;
 - School of Business and Management;
 - School of Economics and Finance;
 - Learning Institute;
 - Blizard Institute of Cell and Molecular Science: Gastroenterology programmes only

Resitting individual elements of assessment

- 7.30 Where standard reassessment is used (see above), students may select which failed elements they wish to reattempt when registering for reassessment. Where students elect not to register for one or more elements of reassessment, this shall count as a missed opportunity. Students may not reattempt failed elements of assessment where the module as a whole has been passed.
- Resitting dissertations and projects*
- 7.31 Where students fail dissertations or projects and do not meet their award requirements, the SEB shall determine whether a resit or a (PG only) retake for the module should be awarded. The dissertation or project is core (must be taken and passed) for most programmes, and in these cases it is impossible to meet the award requirements without passing the module.
- 7.32 Resitting a dissertation or project requires students to rework and improve the original submission to bring it up to a passing standard; for projects, only the report may need improvement. Students pay only the resit fee, and should receive minimal support; no more than two supervision sessions are advised. As for all resits, the module mark achieved is capped to a bare pass.
- 7.33 The procedure for retaking a dissertation or project is entirely distinct from resitting; details on retaking these modules are given below.
- 7.34 Deadlines for students reattempting projects or dissertations shall normally match those of other students; however, postgraduate students may be permitted to submit earlier, in time for the summer DEB.
- Retakes*
- 7.35 Retakes are the second, much less common, mode of reassessment. Examination boards may require or permit students to retake one or more modules. Retake students reattempt entire modules from scratch, including tuition and completion of all elements of assessment, at the next available opportunity. Retakes shall only be awarded following a recommendation from an SEB and approval from a DEB.
- 7.36 Retakes are not permitted for undergraduate students, though where extenuating circumstances are involved a first take may be considered (see Section 9). This is because there is generally no circumstance in which a retake would be required.

- Should that ever be the case, approval for special module regulations should be requested in advance.
- 7.37 Retakes incur pro-rata tuition fees; retake students attend lectures and classes, and complete all elements of assessment.
- 7.38 Each retake shall count as one permitted attempt at a module, unless a 'first take' is agreed (see Section 9).
- 7.39 Marks for retakes are capped at the pass mark (for the module) ('first takes' are not capped – see Section 9).
- 7.40 Retakes are generally best applied to dissertations and projects (especially in science-based disciplines), where students are required to complete considerable additional work in order to pass.
- Required retakes**
- 7.41 Retakes may be required in place of resits (i.e. a retake is the standard mode of reassessment) where students cannot resit due to the nature of the assessment (e.g. laboratory based assessment, or field work). For in-class tests, a resit may be awarded rather than a retake, as students only need to attend for the duration of the test.
- Retaking dissertations and projects**
- 7.42 Where students fail dissertations or projects and do not meet their award requirements, SEBs shall determine whether resits or retakes for the modules should be awarded. The dissertation or project is core (must be taken and passed) for many programmes, and in these cases it is impossible to meet the award requirements without passing the module.
- 7.43 Retaking a dissertation or project requires students to undertake a new piece of work, with full supervision and full access to facilities. Students pay pro-rata fees. Permission to retake any module can only be granted by DEBs, on the recommendation of SEBs.
- 7.44 The procedure for resitting a dissertation or project is entirely distinct, and the two must not be confused; information on resitting these modules is provided above.
- Recommending and agreeing retakes**
- 7.45 Retakes shall only be awarded on the recommendation of SEBs and with the approval of DEBs. However, SEBs shall not recommend a retake before consulting with the individual student affected as they involve additional time and fees.
- 7.46 Where retakes are required for modules where it is impossible to resit the assessment (fieldwork, laboratory work, etc), all students on the module are informed at the start of the module (students must always be informed of reassessment methods at the start of each module), and further discussion is not required.
- 7.47 SEBs must discuss the issues and implications of retakes with affected students before they present retake recommendations to DEBs. Retakes involve attendance and the payment of fees; there are funding implications for all students, and visa implications for overseas students. These issues must be discussed with and explained to students.

- 7.48 Students shall be charged pro-rata fees to retake modules, irrespective of any accepted extenuating circumstances. Undergraduate students paying home fees will generally receive LEA funding for an additional year; however, overseas and postgraduate students must generally fund retakes themselves. Students should also consider the living and support costs of a further year in study.
- 7.49 Visas for overseas students do not permit part-time study. Further information on visas should be sought from the Advice and Counselling Service, www.welfare.qmul.ac.uk
- 7.50 SEBs shall recommend retakes to DEBs using the appropriate form, available from Registry. All retakes, and the details of the retakes, shall be agreed at DEBs (or, exceptionally, by Chair's Action), using these forms. Retakes cannot be recommended or agreed during the following academic year; this includes retakes of semester two modules.
- 7.51 When retakes are agreed, students shall retake the modules that were failed; they may not replace the failed module with a 'retake' in a module that has not been taken previously, unless the original module has been discontinued, the module is not running, there has been an approved change to the code or title of the module, or there is a clash with another module (only core or compulsory modules take precedence) (*Academic Regulations*, 4.49/5.52).
- 7.52 Students are not permitted to take new or additional supplementary modules where they are retaking less than 120 academic credits.
- 7.53 The SEB shall determine the nature of reassessment, and whether this should be a resit or a retake. Individual members of staff cannot supersede the SEBs' decisions. Individual students cannot simply switch from resitting one element of assessment to retaking the entire module upon payment of the appropriate fee; approval from SEBs and DEBs is required in such cases, and this shall only be granted in truly exceptional cases.
- Requests to retake after the SEB**
- 7.54 School and institute handbooks shall inform students that retakes can only be agreed by SEBs and DEBs, in concert. Requests from students to retake rather than resit modules after the publication of results cannot and shall not be considered.
- 7.55 Students seeking to retake a module after the publication of results shall be advised to submit academic appeals. These appeals shall request the review of the examinations boards' decisions to award resits rather than retakes/. Further information on academic appeals may be found in Section 10, and online at: <http://www.arcs.qmul.ac.uk/students/student-appeals/index.html>

8. External Examiners

General

- 8.1 External examiners shall be appointed by Senate (or its delegated authority) in accordance with the approved processes and criteria; these pay due regard to the QAA Quality Code. External examiners appointed from within the University of London shall also act as intercollegiate examiners.
- 8.2 External examiners shall be accountable to the Principal, and make their reports to the Principal. However, reports shall be directed to the Assistant Academic Registrar (Assessment Governance), who shall be responsible for their review.
- 8.3 External examiners shall be appointed to each programme of study, and shall be members of the Subject Examination Board for the appropriate programme. In some cases, multiple external examiners may be appointed to a single programme of study, or a single external examiner may be appointed to a number of cognate programmes. External examiners shall normally take an overview of an entire programme of study, though on occasion subject external examiners may be appointed to cover specific disciplinary areas.
- 8.4 The numbers of external examiners appointed to a programme, and their range of expertise, shall be sufficient to permit the effective completion of their duties. This is a requirement of the external examiner appointment criteria.
- 8.5 External examiners shall be permitted to view and comment upon all student submissions for all forms of assessment. The precise role of an external examiner shall be agreed by the Subject Examination Board in consultation with the appropriate academic schools or institutes. This shall include approval of examination papers, an appropriate method of sampling assessment, and may include details of participation in oral examinations, etc. Further information on the role of external examiners may be found in the *Academic Regulations* (1.49-1.56), and the *Guidance for External Examiners*: <http://www.arcs.qmul.ac.uk/quality/external-examiners/index.html>
- 8.6 The core duties of external examiners are as follows (from *Academic Regulations*, 1.54):
- to comment upon the assessments for each module for which they are responsible, the extent to which the assessments cover the syllabus, and whether they enable students to demonstrate achievement of the learning outcomes;
 - to consider, comment upon, and approve all examination question papers, and to comment upon marking schemes for individual papers, assessment criteria, and model answers;
 - to confirm whether or not the standard of marking is satisfactory by scrutinising a sample of examination scripts for each module and, if necessary, a sample of in-course assessment;
 - to comment upon the standards of achievement of students, and the comparability of this achievement to standards elsewhere;
 - to comment upon the standards of proposed awards, and their comparability to similar awards made elsewhere;
 - to make known any causes for concern in relation to academic standards achieved by students, the standards of modules, and the standards of awards to be made;
 - to provide independent opinion where there is a significant, unresolved difference between marks awarded by first and second markers on a script or piece of work;

Deleted: 47

Deleted: 54

Deleted: 52

48

- to advise the Subject Examination Board on appropriate actions where the marks for a module are significantly outside the normal pattern, and to confirm recommendations by markers for actions where the marks for a module are significantly outside the normal pattern;
 - to attend - or conduct - oral examinations, where applicable;
 - to attend meetings of the Subject Examination Board, and to participate fully in decision making;
 - to endorse decisions on results and progression, and recommendations for award, by signing the relevant documentation;
 - to attend meetings of the Degree Examination Board, where the external examiners choose;
 - to submit a full report, including an optional confidential report to the Principal;
 - in addition, for external examiners who are intercollegiate examiners, to comment upon the standard of the University of London awards conferred by QMUL and their comparability with similar awards at other colleges of the University of London;
 - to perform any other duties requested by Senate or the Degree Examination Board, following appropriate consultation over the nature of those duties.
- 8.7 By agreement with the Subject Examination Board and in consultation with the relevant schools and institutes, external examiners may also carry out other duties including: the approval of project topics and essay titles, interviewing students on their programmes of study and experiences, commenting informally on proposed curriculum changes, commenting upon proposed changes to assessment methods.

Purpose of external examiners

- 8.8 External examiners ensure that the standards of awards and assessment at QMUL are consistent with those of comparable awards from other UK institutions. Intercollegiate examiners (external examiners from other colleges of the University of London) also ensure the consistency of standards within the University.
- 8.9 External examiners ensure that all students are treated equitably, and that due consideration is given to individual students.
- 8.10 External examiners review assessment processes and comment upon their operation in a formal report, and can offer valuable counsel at examination boards and, individually, to programme and module organisers.
- ### Appointment of external examiners
- 8.11 External examiners are appointed by the Deans for Taught Programmes (Humanities and Social Sciences, and Science and Engineering), or the Associate Dean for Education Quality (Medicine and Dentistry). This authority is delegated from Senate.
- 8.12 External examiners shall be nominated using a standard form, available online: <http://www.arcs.qmul.ac.uk/quality/external-examiners/index.html>. The form shall be submitted, with a CV of no more than two pages, to the Assessment Governance Administrator. Nominations without a CV shall not be considered. The Academic Secretariat shall ensure that the nominee meets the QMUL appointment criteria.
- 8.13 Where a nominee meets the appointment criteria, the nomination shall be approved by the Academic Secretariat, and passed to the faculty Dean for consideration. Where approval is given by the Dean, the nominee shall be appointed, and the SEB and school or institute informed by the Academic Secretariat.

49

- 8.14 Where a nominee does not meet the appointment criteria, or is rejected by the Deans, the Academic Secretariat shall refer the matter back to the SEB. Where there is an exceptionally strong case for appointment, the SEB may resubmit the nomination with a statement of justification. These appointments shall require approval from the Vice-Principal (Teaching & Learning), in addition to the faculty Dean and the Academic Secretariat. In most instances, SEBs should seek alternative candidates when nominations are rejected.

Period of appointment

- 8.15 External examiners are appointed for a period of four years; this may be extended for one further year in very exceptional circumstances. An extension of appointment must be approved by the Dean for Taught Programmes or Associate Dean for Education Quality. A standard form, available online, is used for extensions: <http://www.arcs.qmul.ac.uk/quality/external-examiners/index.html>.
- 8.16 The Academic Secretariat monitors the appointment of external examiners, and attempts to remind SEBs when a new appointment or extension is required. However, it is the responsibility of SEBs to manage this information; the Academic Secretariat holds records on all external examiners, and can answer queries on the terms of office of individual external examiners.

Moderation of assessment

- 8.17 External examiners shall be permitted to view and comment upon all student submissions for all forms of assessment. The external examiners' role is to moderate the marking of internal examiners; they shall not be involved in double marking.
- 8.18 Sampling arrangements for the moderation of assessment shall be agreed between the SEB and the external examiner in advance on an individual basis. External examiners must be provided with sufficient evidence to determine whether the internal marking and classification for honours is consistent, and of an appropriate standard.
- 8.19 Samples shall in all cases include a range of assessments. Sampled assessments shall be sent together with all comments from the internal examiners. The range of assessments sampled shall include examples of the following (excepting significant differences of opinion, there is no need to include all examples from each category):
- Assessments from the top, middle, and bottom of the performance range;
 - First class or distinction grade assessments;
 - Failed assessments;
 - Scripts of borderline students;
 - Assessments where the internal examiners' marks differed significantly (see the section on *Marks and Marking* for more details – it is not the externals' responsibility to resolve these differences).
- 8.20 Where moderation indicates that significant alterations to one or more marks may be necessary, the internal and external examiners shall consider whether the change relates to the individual submission, or to all submissions of the assessment. In the latter case, the marks for the entire cohort shall be reviewed; the examiners have discretion on whether to remark all submissions, or to scale marks according to an agreed benchmark. Rescaling shall be reported to, and endorsed by, the SEB.

- 8.21 Examination board chairs shall ensure that any significant elements of in-course assessment are made available to external examiners if requested, in addition to samples from examination scripts, dissertations, and projects. The definition of significant may vary between disciplines, but elements of assessment weighted at 25 percent or more of a module should be made available. Where submissions have been returned to students, SEBs must have a means of returning samples to external examiners where required.

- 8.22 External examiners are not markers – exceptionally, and by mutual agreement, they may be asked to give a mark where there is dispute among the SEB over the provisional mark. However, comments from external examiners on marks to be awarded are recommendations, and are subject to approval from the SEB itself. Externals should not change marks unless specifically asked to give a mark in the circumstances outlined here.

External examiners' views

- 8.23 Chairs of examination boards shall ensure that external examiners are invited to express their views. This is particularly important for difficult or contentious decisions, as external examiners' views carry a particular weight.
- 8.24 Where the board disagrees in a routine case, the final decision shall be reached by a majority vote; chairs have a second and casting vote in the event of a tie. However, where external examiners express grave concerns that particular decisions would be improper or inequitable, chairs must seek the views of all external examiners on the issue. The board shall defer to the majority decision of the external examiners, and the substance of the discussions shall be recorded in the minutes.

Views that contravene regulations or guidance

- 8.25 External examiners may occasionally recommend courses of action that contravene QMUL's regulations or guidance documents. The Academic Registrar or Assistant Academic Registrar (Assessment Governance) shall be consulted without delay in such cases; discussion of the issue shall be closed until guidance is received.

External examiners' reports

- 8.26 External examiners are required to complete a formal report for each academic year of service. A standard *pro forma*, available online, shall be used in all cases <http://www.arcs.qmul.ac.uk/quality/external-examiners/index.html>
- 8.27 External examiners shall send their reports, and any expenses claims, to the Assessment Governance Administrator; these items shall not be sent directly to SEBs, schools, or institutes. The Assessment Governance Administrator notes any issues in the reports, and send copies to the SEB Chair, Secretary, and the Head of School or Institute. The SEB Chair and Head of School or Institute must provide a written response to the external examiner where any issues are raised, and this shall be copied to the Academic Secretariat. Reports are also considered by the Vice-Principal (Teaching & Learning) and the faculty Deans for Taught Programmes.
- 8.28 Universities are now obligated by the QAA to make external examiner reports available to students. Schools and institutes should share reports and SEB responses with students through Student Staff Liaison Committees, and make reports available to individual students on request.

9. Extenuating Circumstances

Definition

- 9.1 Extenuating circumstances are circumstances that are outside a student's control which may have a negative impact on a student's ability to undertake or complete any assessment so as to cast doubt on the likely validity of the assessment as a measure of the student's achievement (*Academic Regulations*, 3.80).

Basic principles

- 9.2 Two basic principles underpin the consideration of extenuating circumstances:

- i. Assessment shall measure achievement, not potential.
- ii. Only extenuating circumstances beyond the control of students are valid.

- 9.3 The first principle is that assessment shall measure achievement, not potential (there are only two exceptions to this rule, detailed below, under '*Degree classifications and progression*'). Marks cannot be awarded on what a student had the potential to achieve. Therefore, the only pertinent extenuating circumstances are those that cast doubt upon the validity of assessments as measures of achievement. This excludes circumstances that do not relate to the *assessment* (for example, absence from sections of teaching due to illness). Students may not always reach their full potentials, but this does not affect the validity of assessments as measures of achievement.

- 9.4 The second principle is that the only relevant extenuating circumstances are those beyond the control of students. Students are responsible for submitting assignments on time, attending examinations at the appropriate times and venues, and submitting information on extenuating circumstances in the proper format by the specified deadlines. Excuses such as workload, computer failure, misreading exam timetables, forgetting to set an alarm, or misjudging the time required for revision are invalid.

Informing students of EC procedures

- 9.5 Information on extenuating circumstances shall be provided in the *Academic Regulations*, the *Student Guide*, and school and institute handbooks. All of these documents are available online, and it is the responsibility of students to familiarise themselves with these documents, and to follow the procedures. The Advice and Counselling Service also provides a specially designed booklet for students, which should be their main point of reference:
<http://www.welfare.qmul.ac.uk/documents/leaflets/extcircs/5069.pdf>
- 9.6 It is strongly recommended that schools and institutes remind students of extenuating circumstances procedures at appropriate times in the academic year, such as the beginning and end points of the examination periods. Communications should be sent by email, and can be supplemented by posters, in-class announcements, etc.
- 9.7 The examination scripts of students who fall ill during the course of an examination shall be marked as normal, and a provisional mark presented to the SEB and entered into the Student Information System (SIS). Where extenuating circumstances are submitted and accepted, SEBs shall agree outcomes and amend grades to reflect their decisions in the period between the SEB and the lockdown of the SIS.

Submission of extenuating circumstances

- 9.8 It is the responsibility of students to submit extenuating circumstances claims using the appropriate forms. These shall be submitted to a designated contact in the school or institute as soon as possible, and no later than three working days before the meeting of the relevant SEB's extenuating circumstances sub-board.
- 9.9 All submissions must be accompanied by appropriate documentary evidence, such as medical certificates, death certificates, or police reports. Schools and institutes shall issue receipts for extenuating circumstances claims and evidence. The use of receipts precludes (or substantiates) claims from students that schools and institutes have lost their submissions.
- 9.10 Where students submit evidence of extenuating circumstances without completing a form or giving further details, the SEB shall make efforts to obtain this information. Where this information is not submitted, the SEB shall still attempt to consider the evidence properly and record a decision.

Late submission of extenuating circumstances

- 9.11 Late submission of claims for extenuating circumstances shall not be considered. Students making such claims shall be consulted by the SEB and, if necessary, advised to submit an academic appeal. Further information on academic appeals may be found below, and online:
<http://www.arcs.qmul.ac.uk/students/student-appeals/index.html>
- 9.12 However, where a submission is received shortly after the deadline, an SEB may, exceptionally, consider the claim if there is manifest evidence of good reason why the submission was made by the deadline. These are the grounds for appeal, and in situations where an appeal would clearly be upheld in a student's favour, there is no purpose in delaying the process. Please note that the definition of 'good cause' is extremely stringent however (*Academic Regulations*, 2.149), and that the cause must be beyond the student's control.

Fitness to sit and absence from examinations

- 9.13 The *Academic Regulations* stipulate that where students are unwell on the day of an examination, they should not attempt the examination. Instead, these students should submit claims for extenuating circumstances, with medical evidence, in accordance with the normal procedures (*Academic Regulations*, 3.54).
- 9.14 Where a student is absent from an examination due to valid, accepted extenuating circumstances, the SEB shall award a first sit (or a first sit resit) at the next available opportunity. Further information on first sits is given below.
- 9.15 Where students attend examinations or submit assignments, they automatically declare themselves 'fit to sit', and the marks awarded are deemed an accurate reflection of their performances. Extenuating circumstances claims cannot be considered in these circumstances, and shall be automatically dismissed.

Illness during examinations

- 9.16 Where students fall ill during the course of an examination, the Senior Invigilator shall record the event in the Invigilator's Report, which shall be sent to the SEB chair as normal.

- 9.17 Students who fall ill during the course of an examination should submit claims for extenuating circumstances, with documentary medical evidence, in the same manner as any other claim if they wish to receive special consideration. Such claims shall only be accepted if the student was fit to sit on entering the examination venue, but – for unforeseen reasons - became ill during the examination. Where a student leaves the venue in these circumstances, any work completed up to the point of departure shall become null and void, irrespective of whether the extenuating circumstances claim is subsequently upheld; the student shall be treated as if they had never attended the examination (*Academic Regulations, 3.56*).

Decision making

Extenuating circumstances sub-boards

- 9.18 Every SEB must operate an Extenuating Circumstances Sub-board to consider claims in advance of the main SEB meeting (*Academic Regulations, 1.41*).
- 9.19 The sub-board acts as a filter for the SEB, rejecting cases that are unsupported or irrelevant, making recommendations on clear-cut cases, and identifying cases that require consideration by the SEB (normally where classifications may be affected).
- 9.20 The sub-board cannot act on behalf of the SEB; it can only make recommendations for consideration for approval by the full SEB. However, the full SEB will not normally consider individual cases in detail unless the sub-board is unable to make a clear recommendation.
- 9.21 The terms of reference for extenuating circumstances sub-boards are as follows (*Academic Regulations, 1.41*):
- to consider extenuating circumstances submitted by students and supporting evidence, and the overall profile of the students with such circumstances;
 - to consider whether or not, in the subcommittee's judgement, the extenuating circumstances are valid and whether or not they had an impact on the students' performance or participation in assessment;
 - to make recommendations to the Subject Examination Board about actions to be taken in the light of extenuating circumstances;
 - to maintain a record of extenuating circumstances submitted and considered, and the recommended actions.
- 9.22 SEB chairs may serve on extenuating circumstances sub-boards, but they are not required to chair the sub-board (though they are entitled to do so). This role is often taken by Senior Tutors.
- 9.23 Extenuating circumstances sub-boards shall be properly serviced. It is recommended that the secretary to the SEB also acts as secretary to the sub-board, and maintains a set of confidential minutes. This ensures a clear flow of information between the sub-board and the full SEB. The sub-board minutes shall record details of each case, including the reasons for the submission, and the recommendation of the sub-board.
- 9.24 All submissions shall be considered properly, and decisions recorded for each submission in the minutes of the full SEB. The minutes of the full SEB shall not, however, include the full details of each claim unless these are discussed in depth.

- 9.25 Decisions on the validity of extenuating circumstances claims shall be made on the basis of academic judgement, provided that decisions are in accordance with the *Academic Regulations* and the published procedures on extenuating circumstances.

Consideration of claims

- 9.26 SEBs may take into account extenuating circumstances in mitigation of poor performance, or of failure to attend an examination or submit an assignment. The SEB shall consider the effects of extenuating circumstances upon the validity of the assessments, and also their cumulative effects upon students' progression or classification (this last is the only situation in which poor performance may be considered, as marks cannot be given on potential). However, the performance of an individual student must always be considered in the context of the performance of the entire cohort.
- 9.27 SEBs shall dismiss claims made on the basis of a series of examinations scheduled in close succession. These situations are bound to occur with over 1,000 examinations timetabled over a short period (*Academic Regulations, 3.82*).

- 9.28 Employment commitments and workload issues are not valid extenuating circumstances; students commit to being available during teaching and assessment periods when they enrol with QMUL.

Deferral of decisions

- 9.29 Where an SEB has insufficient information to reach a decision on a particular claim for extenuating circumstances, it may defer the decision and authorise the Chair to act on its behalf. This generally occurs when a student submits a claim but is awaiting evidence.
- 9.30 SEBs shall agree clear frameworks for chairs to follow when deferring decisions. For example, 'if evidence is received for the alleged extenuating circumstances, the student will receive x; if evidence is not received or is found inadequate, the student will receive y'.
- 9.31 SEBs shall also specify timeframes in which the matters must be settled, even where evidence is not later submitted. The timeframe shall normally be determined by practical constraints, particularly the timing of DEBs.
- 9.32 Where SEBs defer decisions, a holding mark of '0EH' must be entered into the Student Information System; this must be updated as soon as the outcome is known.
- 9.33 Deferred decisions shall be made and recorded using Chair's action memoranda. Where these actions occur after the relevant DEB, and require DEB approval, the Chair's action memoranda must be sent to the Assistant Academic Registrar (Assessment Governance).
- 9.34 **Double counting**
Where a student's extenuating circumstances are considered in the context of individual modules, there will be no outstanding issues to consider in regard to progression or award, and no further action can be taken on the basis of that claim.
- 9.35 SEBs must ensure that extenuating circumstances are never 'double counted' (for example, permitting a certified absence for an individual module, and then also compensating for progression).

Possible EC outcomes

Quick reference guide to possible extenuating circumstances outcomes

- 9.36 An SEB may recommend or agree the following extenuating circumstances outcomes, subject to the approval from the specified authorities.

| Action | SEB | DEB |
|---|-----------|---------|
| Reject | Approve | - |
| First sit | Approve | - |
| First take | Recommend | Approve |
| Discount module assessment of ≤20 percent | Approve | - |
| Defer classification* | Recommend | Approve |
| Discount ≤30 credits from classification* | Recommend | Approve |
| Discretion in classification | Recommend | Approve |
| Discretion in progression* | Approve | - |
| Suspension of regulations | Recommend | Endorse |

* limited applicability

Rejection

- 9.37 An SEB may reject a claim for extenuating circumstances if it is without merit, in which case no further action shall be taken.

First sits

- 9.38 A first sit is an attempt at the assessment for a module that replaces an earlier attempt missed due to accepted extenuating circumstances that resulted in a certified absence. The mark for a first sit shall not be capped (though students can receive first sits of resits, which are capped). A first sit does not count as an incremented permitted attempt; instead, it takes the place of the attempt affected by extenuating circumstances. Please note the distinction between first attempts and first sits.

- 9.39 Where students submit evidence of extenuating circumstances that have impacted upon their performances, and these are upheld by SEBs, SEBs may award first sits for the affected individual elements of assessment (*Academic Regulations*, UG: 4.42-44; PG: 5.40-42).

- 9.40 Students may have extenuating circumstances which affect resit attempts. In these cases, a first sit may be applied to the resit, becoming a 'first sit resit'. First sit resits follow the normal resit procedures for the modules, and the module mark may be capped. However, a first-sit-resit does not count as an additional attempt; it replaces the resit attempt affected by extenuating circumstances.

Timing of first sits

- 9.41 First sits shall occur at the SEB's next normally available attempt (see Section 7). However, where a pass for the module is required in order to progress, students have the right for the first sit to occur in the late summer examination period, before the start of the following academic year, even where the SEB does not normally operate late summer resits (*Academic Regulations*, 3.87).

- 9.42 First sits for finalists are always held in the following academic year.

- 9.43 Decisions on extenuating circumstances claims are made by SEBs, which meet after provisional module marks have been submitted to the Student Information System (SIS). It is therefore necessary for the SIS to be amended after the SEB has confirmed marks for all students and made its decisions, including agreed first sits.

- 9.44 Where SEBs agree first sits, 'ONA' shall be entered against the elements of assessment affected. Where claims are rejected, 'ONR' shall be entered. Where a decision is on hold (for example, where a claim has been received but the promised evidence is awaited), 'OEH' shall be entered. SEBs must ensure that all certified absences are correctly entered before the deadline for confirmed marks, and that OEH marks are updates as soon as the outcome is known (see 'Key Dates' in Section 1 of the *Assessment Handbook*).

- 9.45 A first sit must be of the same format and rigour as the missed assessment. The SEB shall determine whether or not this is the case. First sit marks are not capped, except in the cases of first sit resits (which follow the normal resit procedures).

First takes

- 9.46 A first take is an attempt at a module - including teaching - that replaces an earlier attempt; it can only be granted under very specific conditions (see below). For undergraduate students, the mark for a first take shall replace the mark for the first attempt at the module, which will no longer be used in classification. First takes do not count as additional attempts; instead, they take the place of the attempt affected by extenuating circumstances.

- 9.47 Where students submit evidence of extenuating circumstances that have impacted upon their performances, and these are upheld by SEBs, DEBs may award first takes (for whole modules and with teaching) rather than a first sit (for one or more individual elements of assessment). This shall only be considered in exceptional circumstances, where a student has missed a large proportion of teaching due to accepted extenuating circumstances and there is exceptionally good reason why the student did not simply interrupt (*Academic Regulations*, 4.45/5.50). In such situations, students should be advised to interrupt their studies before it comes to the point of requiring a first take.

Discounting elements of assessment

- 9.48 Where a student has a certified absence for a minor element of assessment for a module, the SEB may agree that the element be discounted from the calculation of the module mark. This is only permitted where the missed element is worth 20 percent or less of the module, and should preferably be used only where it is impractical for a first sit to take place. A first sit is always preferable where possible.

Deferring classification (certain UG programmes only)

- 9.49 Undergraduate finalists may on occasion meet the programme and module requirements for award (and therefore be eligible for classification) despite missing a significant portion of final year assessment due to valid extenuating circumstances.

- 9.50 In these circumstances, SEBs may recommend to DEBs that the award should not be agreed, and that the student should be permitted to return in the following academic year for first sits (*Academic Regulations*, 3.89.i). Note that this is *not* a suspension of regulations, but does require DEB approval.

Discounting credits from classification (certain UG programmes only)

- 9.51 Undergraduate finalists may on occasion meet the programme and module requirements for award (and therefore be eligible for classification) despite missing a significant portion of final year assessment due to valid extenuating circumstances.

- 9.52 SEBs may also recommend that DEBs agree the awards, but discount the affected module marks from the calculation of the College Mark where there are valid and

accepted extenuating circumstances and the award rules allow for this. No more than 30 credits of modules may be discounted in this way (*Academic Regulations*, 3.89ii), and core modules cannot be discounted.

Discretion in classification and progression

- 9.53 There are two (and only two) instances in which potential, rather than achievement, may be considered in relation to extenuating circumstances.

Classification

- 9.54 Where a student's College Mark falls within the zone of consideration, an SEB may use extenuating circumstances not taken into account elsewhere as a reason to consider the student for the higher classification via the application of discretion. SEB's should be confident that the student would have achieved the higher classification had there been no extenuating circumstances – it is not an automatic recommendation.

- 9.55 Where a student has suffered 'general' extenuating circumstances during their studies, the consideration of the application of discretion in classification may be the only possible way to consider the circumstances. Therefore, these may be carried forward from year to year; SEB's should keep a note of such cases so that the details are considered when the student reaches the point of classification. Wherever possible, action should be taken to 'use up' the extenuating circumstances before that point, for example by first sits, etc.

Progression

- 9.56 SEBs may take into account extenuating circumstances (where these have not been considered elsewhere), and exercise discretion in permitting students to progress in the following situations: (i) a student with outstanding first sits who has passed modules to the value of 75 credits at the end of developmental year one or passed modules to the value of 165 credits at the end of developmental year two may be permitted to progress and take the first sit while studying for the next developmental year. (BA, BSc, BSc(Eng), BSc(Econ), BEng) (*Academic Regulations*, 4.68); or, (ii) a student with outstanding first sits who has passed modules to the value of 90 credits at the end of developmental year one, or passed modules to the value of 205 credits at the end of developmental year two, or passed modules to the value of 300 credits at the end of developmental year three may be permitted to progress and take the first sit while studying for the next developmental year. (MEng, MSci) (*Academic Regulations*, 4.98). Alternatively, students may be permitted to sit or submit the assessment in the late summer examination period (non-finalist students only).

Monitoring

- 9.57 SEBs shall complete summary reports on extenuating circumstances for consideration by DEBs and the Academic Secretariat, in order to work towards more standardised decision-making. The summary report template may be found in Appendix G of the *Assessment Handbook*, and should be submitted together with SEB reports to DEBs (see Section 6 of the *Assessment Handbook*).

10. Exceptions and Special Cases

- 10.1 Every effort must be made to ensure the security of in-course assessments, examination scripts, and mark details. In the unlikely event that these items are mislaid by QMUL, the SEB chair should immediately notify the Assistant Academic Registrar (Assessment Governance), who will provide advice on how to proceed.
- 10.2 Students should be advised to retain copies of in-course assessment submissions. Where the lost item is a written in-course assessment, students shall be asked to resubmit the assignment; the resubmission shall be marked, or remarked, as normal.
- 10.3 Where students cannot or will not resubmit assignments without good cause, bare pass marks shall be applied. These may be offered alongside the option of submitting a further assignment, in order to seek to achieve higher marks.
- 10.4 Students may occasionally have good cause for being unable to resubmit assessments. Such instances may include examination scripts and practical or skills assessments that leave no physical copy. Two approaches are available to ensure that students are not disadvantaged and academic standards not compromised:
- Where the lost assignment is not the sole element of assessment for the module and the remaining elements provide sufficient evidence of achievement of the module learning outcomes, the lost assignment shall be disregarded. The module mark shall be calculated only on the elements that are marked. This shall be done by increasing the remaining elements proportionately. For example, if a module should have been assessed by: Exam (50%), Essay 1 (25%), Essay 2 (25%), and 'Essay 2' was lost, the remaining elements should be rescaled to Exam (66.67%) and Essay 1 (33.33%). Remaining elements with similar learning outcomes shall *not* be disproportionately increased to attempt to replace the missing element (e.g. keeping 'Exam' at 50% but doubling 'Essay 1' to 50% in the example above)
 - Where the lost assignment was the sole element of assessment for the module, or where the remaining elements do not provide sufficient evidence of achievement of the module learning outcomes, the module shall not count toward the calculation of the developmental year mark or the College Mark. This approach is preferable to attributing marks without sufficient evidence of students' achievements, though of course this should be avoided wherever possible.
- 10.5 Students may, on occasion, wish to submit a new assignment or resit an examination to replace the lost work. SEB chairs shall use their discretion in such instances, and may elect to set an alternative assessment for the purpose.
- Suspension of regulations
- 10.6 Requests for the suspension of regulations (module, programme, or Academic Regulations) shall be extremely rare; SEBs must make all possible efforts to avoid the need for suspension. Requests will only be considered in two instances (*Academic Regulations*, 1.21):
- Where a situation has arisen that was not foreseen by the regulations (where the regulations require amendment, but a suspension is needed for the current cohort);
 - Where the application of the regulations would be manifestly unfair to one or more students.

- Authority to request and grant a suspension of regulations**
- 10.7 Requests for the suspension of regulations are reserved to Heads of Schools, Institutes, [Directorates or equivalent](#), and to the Degree Examination Boards (*Academic Regulations*, 1.22).
- 10.8 Heads of Schools, Institutes, [Directorates or equivalent](#) may normally only request suspensions that do not relate to examination board proceedings, for example admissions decisions, but may act on behalf of a SEB Chair/Deputy where unavailable.
- 10.9 All requests for the suspension of regulations related to examination board proceedings shall be endorsed by the appropriate Degree Examination Board. Such requests shall normally derive from a recommendation placed by the Subject Examination Board. The DEB may elect to endorse the SEB's recommendation, or to agree an alternative approach; this may include the suspension of other regulations than those proposed by the SEB. Where a DEB does not endorse a request for the suspension of regulations, the matter shall be closed.
- 10.10 The suspension of any regulation can only be agreed by the Vice-Principal (Teaching & Learning) (or, in the Vice-Principal's absence, a nominated member of senior staff from the Principals' Office); no other individual or group may approve suspension requests. Where the Vice-Principal does not approve a request for the suspension of regulations, the matter shall be closed.
- Procedure**
- 10.11 Requests for the suspension of regulations related to examination board processes shall take the form of a written Chair's Action, endorsed by both the SEB and the DEB (or the respective chairs). Suspension requests from Heads of Schools and Institutes shall take the form of formal memoranda. All requests for the suspension of regulations shall include the following information:
- full details of the regulations to be suspended, including numbers and verbatim text. Guidance may be sought from the Assistant Academic Registrar (Assessment Governance) or Assessment Governance Administrator;
 - a case for the approval of the suspension. This shall be made as clearly as possible while providing all relevant information. Any precedent set by past cases shall also be included;
 - the desired outcome of the suspension; for example, for a particular mark to be expunged and the student permitted a first sit;
 - the full names and Student Identity Numbers of any affected students.
- 10.12 Requests for the suspension of regulations shall always be made to the Assistant Academic Registrar (Assessment Governance); the Vice-Principal (Teaching & Learning) shall not be approached directly by schools and institutes on these matters. The Registrar shall then prepare further paperwork, and send this with the original request to the Vice-Principal. The Registrar may require that further information or evidence be supplied before forwarding requests to the Vice-Principal. Requests for the suspension of regulations shall not be made by any other approach.
- 10.13 The case details and rationales of suspension requests made by SEBs shall be included in the SEBs' reports to the DEBs; no decisions on the affected students may be published until the Vice-Principal has taken a final decision. Suspensions sought by chairs between boards shall be reported at the next board meeting.

- 10.14 The Assistant Academic Registrar (Assessment Governance) shall communicate the outcome of suspension of regulations requests to those who requested the suspension (SEB and DEB chairs, or Heads of Schools or Institutes). These individuals shall be responsible for ensuring that outcomes are communicated to the affected students (*Academic Regulations*, 1.23).
- 10.15 ARCS submits quarterly reports on suspensions of regulations to Senate, in order to ensure full academic oversight and to identify problematic regulations.
- Assessment Offences**
- 10.16 The Assessment Offences Regulations are included within the *Academic Regulations* (2.98 onwards). The regulations in effect at the time of the assessment apply, rather than those in effect at the time of individual students' enrolments.
- Definitions**
- 10.17 Allegations of any of the following must be dealt with according to the Assessment Offences Regulations;
- [breach of any section of the Academic Regulations relating to the conduct of assessment;](#)
 - [offences relating to an invigilated examination:](#)
 - [unauthorised access to an examination paper before an examination;](#)
 - [forgery of an examination timetable produced by QMUL;](#)
 - [removal of a question paper, answer script or other examination stationery from an examination venue;](#)
 - [causing a disturbance during an examination, either physically, verbally, or through an electronic device;](#)
 - [refusal to cooperate with an invigilator, or to follow an invigilator's instructions;](#)
 - [possession of unauthorised materials whilst under examination conditions, or leaving unauthorised material in an examination venue \(including cloakrooms and toilets\);](#)
 - [access, possession or use of unauthorised material on a computer, mobile telephone, or other electronic device during an examination;](#)
 - [communicating with another candidate while under examination conditions;](#)
 - [copying, or attempting to copy, the work of another candidate;](#)
 - [having writing on the body in an examination venue;](#)
 - [plagiarism;](#)
 - [the fraudulent reporting of source material;](#)
 - [the fraudulent reporting of experimental results, research, or other investigative work;](#)
 - [collusion in the preparation or production of submitted work, unless such joint or group work is explicitly permitted;](#)
 - [use, or attempted use, of ghost writing services for any part of assessment;](#)
 - [submission of work, or sections of work, for assessment in more than one module or assignment \(including work previously submitted for assessment at another institution\);](#)
 - [impersonation of another student in an examination or assessment, or the employment of an impersonator in an examination or assessment.](#)
- 10.18 The correct procedures and regulations shall be followed closely when dealing with assessment offences, as QMUL is making formal allegations against students.

Deleted: 2

Deleted: 2

Deleted: entering an examination venue with

Deleted: <#>breach of any sections of the Academic Regulations relating to the conduct of assessment;¶
 <#>unauthorised access to an examination paper before the appropriate examination;¶
 <#>forgery of an examination timetable produced by QMUL;¶
 <#>causing a disturbance during an examination, either physically, verbally, or through an electronic device;¶
 <#>refusal to cooperate with an invigilator, or to follow an invigilator's instructions;¶
 <#>possession of unauthorised materials while under examination conditions, or hiding unauthorised materials in an examination venue (including cloakrooms and toilets);¶
 <#>use or possession of unauthorised materials in a pre-programmable memory device during an examination;¶
 <#>access or use of prohibited sources of information on a computer, mobile telephone, or other device during an examination;¶
 <#>plagiarism;¶
 <#>fraudulent reporting of source material;¶
 <#>fraudulent reporting of experimental results, research, or other investigative work;¶
 <#>collusion in the preparation or production of submitted work, unless such joint or group work is explicitly permitted;¶
 <#>use, or attempted use, of ghost writing services for any part of assessment;¶
 <#>submission of work, or sections of work, for assessment in more than one module or assignment (including work previously submitted for assessment at another institution);¶
 <#>impersonation of another student in an examination or assessment, or the employment of an impersonator in an examination or assessment;¶

10.19 Where an investigation is carried out within a school or institute, the school/institute is responsible for recording the offence in the SIS.

10.20 Accusations of assessment offences shall not be withdrawn or summarily dismissed once alleged. Where there are no cases to answer, allegations shall be formally dismissed; all allegations must be properly investigated.

Plagiarism

10.21 Where plagiarism is suspected and the element of assessment concerned counts for 30 percent or less of the module mark, the school or institute may deal with the offence. Where the element is weighted at 31 percent or more, the case shall be referred to the Academic Secretariat as soon as possible. Further advice may be sought from the Assistant Registrar (Student Casework).

10.22 Where allegations of plagiarism are handled by schools and institutes, the Head of School or Institute (or nominee) shall make decisions on whether there is a case to answer and on an appropriate penalty. Where necessary, these cases shall be referred to the Academic Secretariat.

10.23 Allegations of plagiarism to be handled by the Academic Secretariat shall be sent before the meeting of the SEB, and as soon as the case is ready for consideration. Schools and institutes shall not wait to discuss potential plagiarism cases at SEBs, and shall not wait until the end of the academic year to submit such cases to the Academic Secretariat.

Plagiarism statements

10.24 Some schools and institutes require students to sign plagiarism statements, which confirm that the work submitted is that of the student. This is good practice, but not absolutely necessary. Students may be accused and found guilty of assessment offences even where a plagiarism statement is not submitted.

Examination offences

10.25 All allegations of breaches of the regulations on invigilated examinations (*Academic Regulations*, 3.8 – 3.59) shall be investigated by the Academic Secretariat. Schools and institutes shall be informed of these allegations through invigilators' reports and by the Academic Secretariat.

10.26 Where examiners suspect students of having committed examination offences on receipt of scripts, the scripts shall be marked as normal but then forwarded to the Academic Secretariat with a full report. Investigations into offences discovered in this manner may remain unresolved at the time of SEB meetings due to the timescales involved.

Considering students with outstanding assessment offence cases

10.27 Students with unresolved allegations of assessment offences cannot be formally considered by SEBs. Consideration shall be delayed until the cases are resolved. Results and recommended awards shall not be disclosed to students in this situation.

10.28 SEBs shall authorise their chairs and one named external examiner to act on their behalf in order to consider these students upon resolution of alleged assessment offence cases. The Academic Secretariat shall inform the SEB Chair and Registry of the case outcome.

10.29 The SEB Chair shall then submit a Chair's action memorandum, detailing the necessary actions, to the Assistant Academic Registrar (Assessment Governance). If the action is a recommendation for award then the Assistant Academic Registrar will seek approval from the DEB Chair.

Deleted: I

Debtors

Terminated students

10.30 Students who have had their registration and enrolment terminated due to debts under Ordinance D3 (non-payment of fees) are not entitled to attend QMUL, or to sit examinations or attempt any other form of assessment. Should such students attempt an examination or assessment regardless, the submission or script shall be passed to the Academic Registrar, unmarked.

10.31 Students terminated under Ordinance D3 may clear their debts and, upon payment of an administrative charge of £250.00, have their enrolment and registration reinstated. Students reinstated in this manner shall not normally recommence their studies until the appropriate point in the following year.

Non-terminated students

10.32 Formal results shall be withheld from students who have tuition fee debts but who are still enrolled at QMUL.

Deleted: R

Deleted: related directly to their programmes of study

10.33 These students shall be assessed, and decisions on progression and award shall be made. However, formal notification of their results shall be withheld until clearance has been received.

Deleted: These debts include tuition fees, library fines, field course fees, and bench fees. SEB chairs shall receive the names of student debtors in advance of examination board meetings, though schools and institutes are advised to request this information at regular intervals.

Deleted: their

Deleted: , and no indication given of their performances, under any circumstances (either orally or in writing)

10.34 Where these debtors request information on their marks under the provisions of the Data Protection Act, the SEB shall refer them to: dataprotection@qmul.ac.uk. Further information on data protection and freedom of information issues may be found online: <http://www.arcs.qmul.ac.uk/governance/information-governance/data-protection/index.html>

Deleted: Debtors will appear on SEB and DEB reports for the purposes of the meetings, but on any other copy, the award must be withheld and the reason why indicated.

Deleted: programmes of study

Deleted: and

10.35 Results cannot be withheld from students with debts that do not relate directly to their tuition fees. These debts include accommodation charges, nursery fees, wheel clamping fees, failure to repay hardship loans, and library debts. These students shall not appear on debtor lists, and the appropriate administrative departments shall take action to recover the funds in other ways.

Aegrotat provisions

10.36 An aegrotat is an honours degree classified 'aegrotat' (please note the distinction from the pass degree). Full details on aegrotat provisions may be found in the *Academic Regulations* (4.56-60 and 5.57-61)

10.37 SEBs may recommend the award of an aegrotat where students have taken the full complement of modules required for award, but missed the final examinations for the programme due to illness or other medical cause judged sufficient by the SEB. Exceptionally, this may also apply to a student who was present at the examinations, considers that their performances were adversely affected by serious illness or other cause judged sufficient by the SEB, or where a student has died. An aegrotat award shall only be made where there is no reasonable prospect of the student being able to return to complete the programme of study.

10.38 Where a student has not taken the full quote of academic credit, the SEB shall consider the evidence available from other assessments. Where SEBs agree that the students would have achieved the required standards for award, a recommendation for the award of an aegrotat may be made.

- 10.39 Where students are offered aegrotat awards, they may accept the offer, upon which the award shall be conferred, or decline the offer and take the missed or failed assessments as first sits (where applicable). A student who chooses to take the missed or failed assessments shall cease to be eligible for the aegrotat award. A student who chooses to accept the aegrotat award shall cease to be eligible to take the missed or failed assessments.

Academic appeals

- 10.40 Academic appeals are formal requests from students to review the decisions of examination boards. All taught students may submit academic appeals, but this shall only be done in accordance with the College Appeal Regulations. The College Appeal Regulations may be found in the *Academic Regulations* (2.141 onwards), and online: <http://www.arcs.qmul.ac.uk/students/student-appeals/appeals/index.html>.

Deleted: 0

Deleted: <http://>

- 10.41 The Assistant Registrar (Student Casework) is the officer responsible for academic appeals. This does not prevent chairs of examination boards from taking action where they discover factual errors in the processing of students' results, but the Academic Secretariat must be informed as soon as possible.

- 10.42 Students may request the review of examination board decisions on one or both of the following grounds:

- i. procedural error, where the process leading to the decision being appealed against was not conducted in accordance with QMUL's procedure such that there is reasonable doubt as to whether the outcome might have been different had the error not occurred. Procedural error includes alleged administrative or clerical error, and bias in the operation of the procedure.
- ii. that exceptional circumstances, illness, or other relevant factors were not made known at the time for good reason, were not properly taken into account.

- 10.43 Students shall submit academic appeals so that they are received within 14 days of the publication of results. Late submissions shall be accepted, at the Academic Secretariat's discretion, where there is good reason for the delay. 'Good reason' requires students to demonstrate circumstances beyond their control that prevented the relevant factors being disclosed at the appropriate time. Personal embarrassment and unwillingness to disclose personal circumstances do not constitute 'good reasons' (*Academic Regulations*, 2.149).

Deleted: 8

- 10.44 Students cannot appeal against academic judgement, and it is important that students are made aware of this. In particular, it should be noted that examination scripts shall not be remarked. The following also constitute invalid grounds for appeal, and appeals founded exclusively on one or more of these bases shall be rejected automatically:

- i. appeals against the academic judgment of internal or external examiners;
- ii. appeals based on the informal assessment of students' work by members of academic staff;
- iii. retrospective reporting of extenuating circumstances that might reasonably have been made known at the time;
- iv. marginal failure to attain a higher class of degree;
- v. lack of awareness by the student of the relevant procedure or regulations;
- vi. vexatious appeals.

- 10.45 It is strongly advised that SEBs and examiners provide some detailed feedback to students who are unhappy with their results. This shall include information on examination performances, and where students went wrong. Provision of this information is often sufficient to prevent further actions.

- 10.46 Where students submit academic appeals, there is no automatic change to the agreed decisions of examination boards; there is no such status as 'pending appeal outcome'. The status, marks, and classifications of students remain unchanged until and unless appeals are found to have *prima facie* grounds and are referred to the examination board for reconsideration.

Revocation of degrees

- 10.47 The revocation of degrees is rare, and shall occur only in instances of administrative errors, successful academic appeals, and where former students are found to have committed assessment offences. Revoked awards shall generally be replaced with reclassified awards, rather than alternative awards.

- 10.48 Revocations are administered by Academic Registry, with the University of London, and cannot be processed until the original degree certificates are returned. Further information on the revocation of degrees may be sought from the Academic Secretariat.

Data protection and release of information

- 10.49 The Data Protection Act prevents QMUL from divulging personal details on students without their express permission.

- 10.50 Relatives may occasionally contact schools and institutes to enquire about students' progress or whereabouts; even in these circumstances, absolutely no information can be provided. The standard response to such queries shall be along the lines of, "I'm sorry, but under the Data Protection Act I cannot give any information on this individual." This is a legal obligation, and therefore should make the response clear, if no less difficult upon occasion.

- 10.51 Requests for transcripts must be forwarded to Academic Registry together with information release forms signed by the students concerned. Similarly, requests for references must be made directly by students, or with students' acknowledgement.

- 10.52 Further information on Data Protection and Freedom of Information issues may be found online: <http://www.arcs.qmul.ac.uk/governance/information-governance/index.html>

Appendix A Glossary of Terms

Academic credit: An indicator of the amount and level of learning. Given in multiples of 15.

Academic level: The relative complexity, depth of study, and learner autonomy required in relation to a module in the context of its discipline. Each module shall be assigned a level from the following scale:

- Level 3: Foundation or pre-degree level (previously level 0)
- Level 4: Introductory (previously level 1)
- Level 5: Intermediate (previously level 2)
- Level 6: Final (previously level 3)
- Level 7: Masters (previously level M)
- Level 8: Research level

Academic year: A period running from September to August. The developmental years of most undergraduate programmes follow academic years, and policies and regulations are normally written by academic year. See also *developmental year*, and *calendar year*.

Advanced standing: Prior, certificated study from another institution deemed equivalent to QMUL modules from which exemption is sought.

Assessed coursework: Coursework that students are required to complete and submit, and which contributes in whole or in part to module marks and awards.

Award: Undergraduate, graduate, and postgraduate certificates, diplomas, bachelors degrees (with and without honours), and undergraduate and postgraduate masters degrees. The awards offered by QMUL are detailed in the *Ordinances* and the *Academic Regulations*.

Calendar year: A twelve month period. Many masters programmes run for a full calendar year, which may cross two academic years. See also *academic year*, *developmental year*.

College: Queen Mary and Westfield College, which operates under the name 'Queen Mary, University of London' (QMUL).

College Mark: The weighted average of a student's performance, calculated in accordance with the regulations for the award, on which the classification of the award is based.

Component of assessment: See *Element of assessment*.

Compulsory module: A module that must be taken to meet requirements for progression or award.

Core module: A module that must be taken and passed to meet requirements for progression or award. Core modules cannot be condoned.

Co-requisite module: A module that must be taken at the same time as another, specified, module.

Course, course unit: See *Module*. The terms *course* and *course unit* are no longer used.

Delegated authority: Where the authority invested in an individual or body is delegated to another individual or body for a specified purpose.

Developmental year: A year of a programme. Normally one academic year of full time study, during which a student is normally required to be registered for 120 credits of modules. Developmental years for part time students normally last two years. See also *academic year* and *calendar year*.

Dissertation, project, research project: An extended piece of independent study assessed by an output report or extended essay. The dissertation or project comprises a significant part of most masters programmes. In these regulations, the term 'dissertation' also refers to projects and research projects.

Element of assessment: An individual item of assessment. The assessment for a module may comprise several elements of assessment.

Enrolment: A process by which individuals with offers of places to study become students of QMUL. New students must pre-enrol before enrolment, and returning students must re-enrol each year.

Extenuating circumstances: Circumstances that are outside a student's control which may have a negative impact on a student's ability to undertake or complete any assessment so as to cast doubt on the likely validity of the assessment as a *measure of the student's achievement*.

External examiner: A senior professional academic from outside QMUL who monitors the assessment process for fairness and academic standards.

Field of study: The description of the modules passed by a student. Represented in the title of the award conferred upon a student.

First sit: The repeat of all or part of a module's assessment following a certified absence at the first attempt due to extenuating circumstances acceptable to the examination board. A first sit replaces the first attempt and does not count towards the value of academic credit for which a student must normally be registered in an academic or developmental year. First sit module marks are not capped.

First take: The repeat of a module following failure at a previous attempt. This involves attendance and completion of all elements of the module, and submission of all assignments, whether assessed or not. First takes count towards the value of academic credit for which a student must normally be registered in an academic or developmental year. Module marks for first takes are not capped. First takes incur *pro rata* tuition fees.

Intercollegiate examiner: An external examiner from within the University of London.

Invigilated examination: A timetabled summative examination that contributes in whole or in part to the module mark.

Level: See *Academic level*.

Module assessment: Assessment of the performance of a student on a module. This may include a variety of elements and forms, including coursework, dissertations, and practical assignments.

Module: An approved block of teaching and learning leading to the award of academic credit and forming part of a programme of study. 'Module' also refers to course, course unit, subject, or any equivalent approved unit of assessed teaching.

Module mark: The overall module result. This may be an aggregate of marks from several elements of assessment, which may be weighted. It is held to one decimal place.

Notional study hours: The number of hours required to complete an academic credit, module, or programme.

Pathway: A specific combination of modules within a programme leading to a named award.

Prerequisite module: A specified module that must be taken before a second specified module can be taken.

Programme regulations: The regulations for an individual programme of study, approved by Senate, or its delegated authority.

Programme of study (programme): A package of modules approved by Senate, or its delegated authority, and leading to an award of QMUL or the University of London.

Progression: The process of moving from one developmental year to the next, or from the taught element to the project element of a programme.

Project: See *Dissertation*

QMACF: Queen Mary Academic Credit Framework. The structure of academic credits and levels applied to all modules and programmes leading to awards of QMUL or the University of London (introduced in 2008).

Qualifying mark: A specified minimum mark that must be obtained in one or more elements of assessment in order to pass a module. This is in addition to, and distinct from, the requirement to achieve a pass in the module mark to pass the module. For example: 'Students must obtain a minimum aggregated and weighted coursework average of 30.0, and a minimum module mark of 40.0, in order to pass the module.'

Registration: A process by which a student signs up for modules of a programme of study.

Required assessment: Assessment that students are required to complete to a prescribed standard and to submit, but which does not contribute to the module mark.

Research students: Students registered for a programme of study specifically designated as a research programme. Research programmes have separate *Academic Regulations*.

Resit: The repeat of all or part of a module's assessments, following failure at a previous attempt. Resits do not involve the repeat of attendance for the module. They do not count towards the value of academic credit for which students must normally be registered in an academic or developmental year.

Retake: The repeat of a module following failure at a previous attempt. Retakes involve attendance and completion of all elements of the module, and the submission of all assessments (summative and formative). They count towards the value of academic credit for which students must normally be registered in an academic or developmental year. Retakes incur *pro rata* tuition fees.

Special regulations: Programme regulations that diverge from the general *Academic Regulations* for good reason, and which are approved by Senate or its delegated authority. The special regulations are detailed in Sections 6 and 7 of the *Academic Regulations*.

Students: Students of QMUL. Ordinance C1 describes 'those persons who are students of QMUL and associate students of QMUL'. The *Academic Regulations* apply to all students undertaking undergraduate or postgraduate study at QMUL, and to any persons whom Senate declares to be students of QMUL.

Subject: The term by which modules (see *Module*) are known for the LLB and other programmes that operate under the LLB regulations. Where the term 'module' is used in these regulations it also refers to subjects, unless otherwise stated.

Taught component: The parts of a programme delivered as taught modules, as opposed to dissertations or projects. The term is generally used in relation to postgraduate programmes.

Total credit value: The total amount of academic credit required for an award.

Threshold requirement: A progression requirement for MSci and MEng programmes. Students must achieve a year - or aggregate - average (threshold) to progress to the next developmental year. This is in addition to the credit requirements for progression.

University: The University of London, unless otherwise specified.

Appendix B

Code of Practice on Assessment and Feedback

1. Preamble

- 1.1 This code of practice is intended to inform policy and practice on assessment and in the giving of feedback to students.
- 1.2 Students of the College have a right to high quality assessment and feedback, which [a] meets their needs as learners, [b] the College's obligations and responsibilities to treat them all fairly and equitably and [c] ensures the maintenance of academic standards. This Code of Practice has been drawn up with reference to the QAA Code of Practice on Assessment of Students (2006).
- 1.3 Across the HE sector nationally, assessment and feedback have been the lowest scoring areas in the National Student Survey, and in the first two years of operation the College scored particularly poorly in this area.
- 1.4 Departments, Schools and Institutes should adhere to the Principles of this Code of Practice and adopt local strategies based on it. The progress with implementation of these local strategies will be evaluated through the Annual Report on Teaching, annual review of modules and programmes, and College internal reviews.
- 1.5 In this Code of Practice, 'assessment' refers to any activity, task, assignment or examination set as part of the student's academic programme, whether or not the mark or grade for this work contributes to final summative assessment.
- 1.6 'Feedback' refers to oral or written developmental advice on performance that ensures the recipient has a better understanding of values, standards, criteria, etc' (Fry et al, 2003). It should provide students with information on their achievements so as to inform their approaches to learning and improve their performance. Feedback should also give students opportunities for reflection and allow them to make specific improvements in future assessment.
- 1.7 Feedback may be given through project supervision, personal tutoring, or through less formal means (for example, in seminars, tutorials or laboratory classes) but these are not necessarily bound by this Code. Seminar tutors and demonstrators have an important role in giving this type of informal feedback, but academic staff are responsible for the quality of such feedback.
- 1.8 Whilst this Code is concerned primarily with assessment and feedback given by academic staff, it is important to note that self-reflection activated through assessment and peer assessment also impact on student work.
- 1.9 This Code of Practice [has been] approved by the Learning, Teaching and Assessment Committee and by Academic Board and will be reported to Council. It will be reviewed at the end of the first year of operation to ensure its fitness for purpose for use in the College.
- 1.10 The Learning Institute produced a Good Practice Guide on Assessment and Feedback to Students which may be of use to staff in implementation of this

Code. This can be downloaded from the Learning Institute website (<http://www.learninginstitute.qmul.ac.uk>).

2. Principles of the Code of Practice on Assessment and Feedback

The principles below are those which will underpin all assessment and feedback given through modules/courses/units and programmes.

Queen Mary Principles of Academic Assessment

1. Assessment will be designed to aid students' learning and maintain academic standards.
2. Assessment tasks and processes will be fair.
3. Assessment will be explicitly aligned to appropriate criteria as determined by schools, departments and disciplines.
4. Assessment criteria will normally be published for all modules/courses/units.
5. Assessment will align with the requirements of relevant professional bodies.
6. Assessment methods and content will be reviewed periodically to ensure continuing fitness for purpose.
7. Summative assessment will be designed to mark the work submitted and not the student submitting it.
8. Marking consistency will be checked and, in accordance with College policy, double marking undertaken for summative assessment.
9. A diverse range of assessment methods will be used, wherever possible, to capture diverse learning outcomes and accommodate all learners
10. Marking will be undertaken professionally and in appropriate settings.

Queen Mary Principles of Feedback on Student Learning

1. Feedback will be given in ways that promote students' learning
2. Feedback will be given as often as is practicable using a variety of strategies, as deemed appropriate.
3. Curriculum design will be informed by a requirement to integrate opportunities for giving and receiving feedback.
4. Feedback will be relevant, informative and appropriately detailed.
5. Feedback will be given within a reasonable timescale determined by school or departmental policy and advertised clearly to students.
6. However, feedback should always be in a timeframe that allows students to learn for subsequent summative assessment.
7. Feedback will be efficient and use a range of approaches as deemed best practice in each discipline.
8. Feedback will provide academic staff with information that can be used to inform their teaching and curriculum development.
9. Members of a course team and academic advisers should be informed of the progress of students and their areas of success or lack of understanding.
10. Further to Assessment Principle 9 above, feedback will be appropriate to the nature of the assessment task.

Some other useful definitions

Assessment criteria

This is important for students – for whom such criteria can be useful in framing and developing their assessment tasks; and for staff – for whom a shared understanding of the criteria can ease marking and lessen confusion (particularly where there are multiple markers, or double marking is done). Marking criteria may, as described

above, be task-specific, or generic grade descriptors may be used. It is also possible for a combination of both to be used (for example, task-specific criteria could outline area expected to be covered or methods used, whilst generic descriptors outline the skills or competences needed to be demonstrated for specific grades).

Criteria-referenced assessment

Work which is marked according to a set of pre-defined criteria. These criteria could be specific to the piece of work itself (marking criteria) or to the grade awarded (grade-related criteria). In this method of assessment, it should be possible for all students to gain an A (or to fail) depending on their grasp of the subject.

Formative assessment

Work which does not ultimately count towards the final mark for the course unit. In some cases, formative assessment could be plans, drafts or sections of work which will be summatively assessed, on which feedback is given so that the student can improve or alter their performance. The most important point about formative assessment is that its purpose is primarily developmental, rather than judgemental.

Norm-referenced assessment

Work which is marked according to the position of the individual within the group. In this approach, there is no objective definition of grades, rather the top X% gain an A, the next Y% a B, and so on. Using this method of assessment means that it is difficult (if not impossible) to compare performance across courses, as a course unit with strong, high performing students will have the same proportion of A grades as a course unit made up of weaker, poorer performing students. A good example of norm-referencing is TV quiz shows, where the highest score (mark) in an edition will get a contestant through to the next round, even if that score would not have been high enough to win another, comparable, edition.

Summative assessment

Work for which the mark counts toward the student's final mark for the course unit or module.

References

Quality Assurance Agency for Higher Education (2006) *Code of Practice for the Assurance of Quality and Academic Standards*, 'Section 6, Assessment of Students' – September 2006.

http://www.qaa.ac.uk/academicinfrastructure/codeOfPractice/section6/COP_AOS.pdf

Fry, H., Ketteridge, S. and Marshall, S. (eds) 2003. *A Handbook for Teaching and Learning in Higher Education*, Second edition, London: Routledge p 435

Appendix C Production of Examination Papers 2014-15

[To follow.](#)

Appendix D

Examination paper template [2014-15](#)

[To follow.](#)

Appendix E

Notes on the Use of Amanuenses

NOTES ON THE USE OF AMANUENSES Guidelines for Schools and Tutors

An amanuensis is a scribe who, in an examination, writes down or word processes a candidate's dictated answers to questions.

1. Procedure for application

- 1.1 Students diagnosed as dyslexic by an educational psychologist should be assessed for the provision of an amanuensis by the Disability and Dyslexia Service (DDS) to ensure that this is the most appropriate method of assessing the student under examination/timed conditions.
- 1.2 Examples of where a dyslexic student may be recommended the use of an amanuensis in an examination are where a student has very poor handwriting – to the point of illegibility – allied with a slow typing speed. There are other exceptional circumstances where such an arrangement could be recommended, but for the vast majority of dyslexic students the use of an amanuensis would be neither necessary nor desirable.

NB: if there is a recommendation in the student's dyslexia/dyspraxia diagnostic report, produced by an educational psychologist, that they should have access to an amanuensis in examinations, this does not guarantee that they will be recommended access to one in examinations by DDS.

- 1.3 Students with other categories of disability should be assessed for this procedure by the DDS to ensure that this is the most appropriate method of assessing the student under examination/timed conditions.
- 1.4 Recommendations from the DDS will be sent to the student's tutor and the examination officer for the department for departmental approval.
- 1.5 It will be the responsibility of the department to organise the special arrangements for the student, in liaison with the Examinations Office.

2. Guidelines for Operation

- 2.1 The use of an amanuensis should neither give the student an unfair advantage nor should it disadvantage the student.
- 2.2 Additional time should be permitted for the use of an amanuensis. This will normally be an extra 10 minutes per examination to allow for printing out of typed scripts for checking by the students.
- 2.3 An amanuensis should be an adult, ideally a postgraduate research student, who is able to produce an accurate record of the student's answers; who can write legibly, type or word process at a reasonable speed; and, should ideally, have a working knowledge of the subject and the terminology.
- 2.4 Some students using an amanuensis may prefer to draw their own diagrams / charts when the examination paper requires one. In such instances the student should draw the diagram in a separate answer book and indicate in the main answer book that the diagram has been produced by the student as

an appendix. In the main answer book the amanuensis should clearly label the number of appendix, the question number being answered and a title. For those students who have poor co-ordination or issues with upper body mobility, the amanuensis can be requested by the student to draw the diagrams to the student's dictation.

- 2.5 An amanuensis is responsible to the departmental examination officer, and the person appointed to act as the amanuensis must be acceptable to the departmental examination officer. The student cannot nominate the amanuensis but should be given the name of the amanuensis prior to the examination.
- 2.6 An amanuensis should not normally be someone that teaches the student, as they may feel overly sympathetic to the student and expand on what the student dictates using their interpretation rather than the exact words used by the candidate. On no account may a relative of the student be used as an amanuensis.
- 2.7 A student should, *wherever possible*, have adequate practice in the use of an amanuensis.
- 2.8 A student using an amanuensis must be accommodated in such a way that no other student is able to hear what is being dictated.
- 2.9 The amanuensis may also act as the invigilator.
- 2.10 It is the student's responsibility to direct the amanuensis regarding the physical layout of the answer to each question as it appears on the answer book.
- 2.11 During the examination an amanuensis:

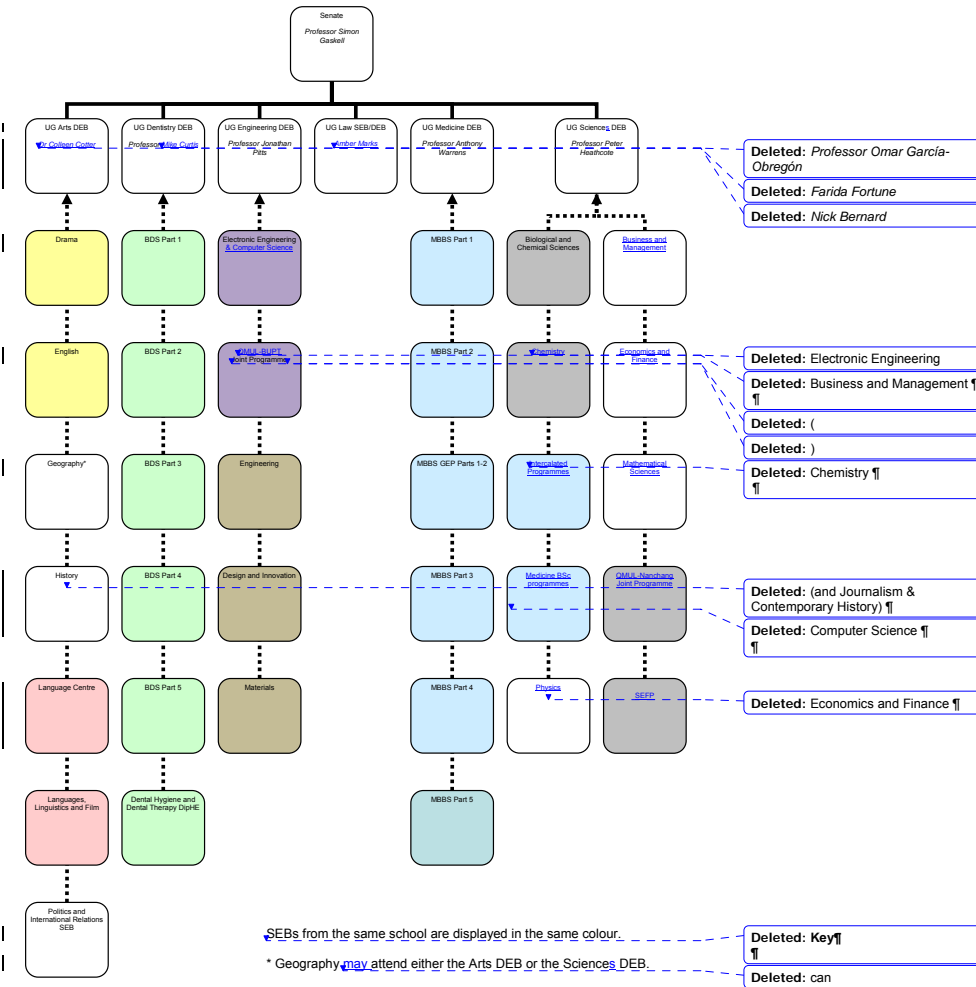
- must neither give factual help to the student nor offer any suggestions;
- must not advise the student regarding which questions to do, when to move on to the next question, or the order in which the questions should be done;
- must write down, type or word process answers exactly as they are dictated;
- must write, type or word process a correction on a typescript or Braille sheet if requested to do so by the student;
- may, at the student's request, read back what has been recorded;
- must not expect to write throughout the examination because the student will be expected to carry out some form of planning for each response. This will be conducted by the student in the answer book provided by the departmental examination officer and any rough workings crossed through before it is handed in at the end of the examination;
- must accompany a student to the lavatory if there are medical difficulties which would require frequent visits

Appendix F Exam Board Structure 2014-15

Deleted: 2013-14

Undergraduate Examination Boards 2014-15

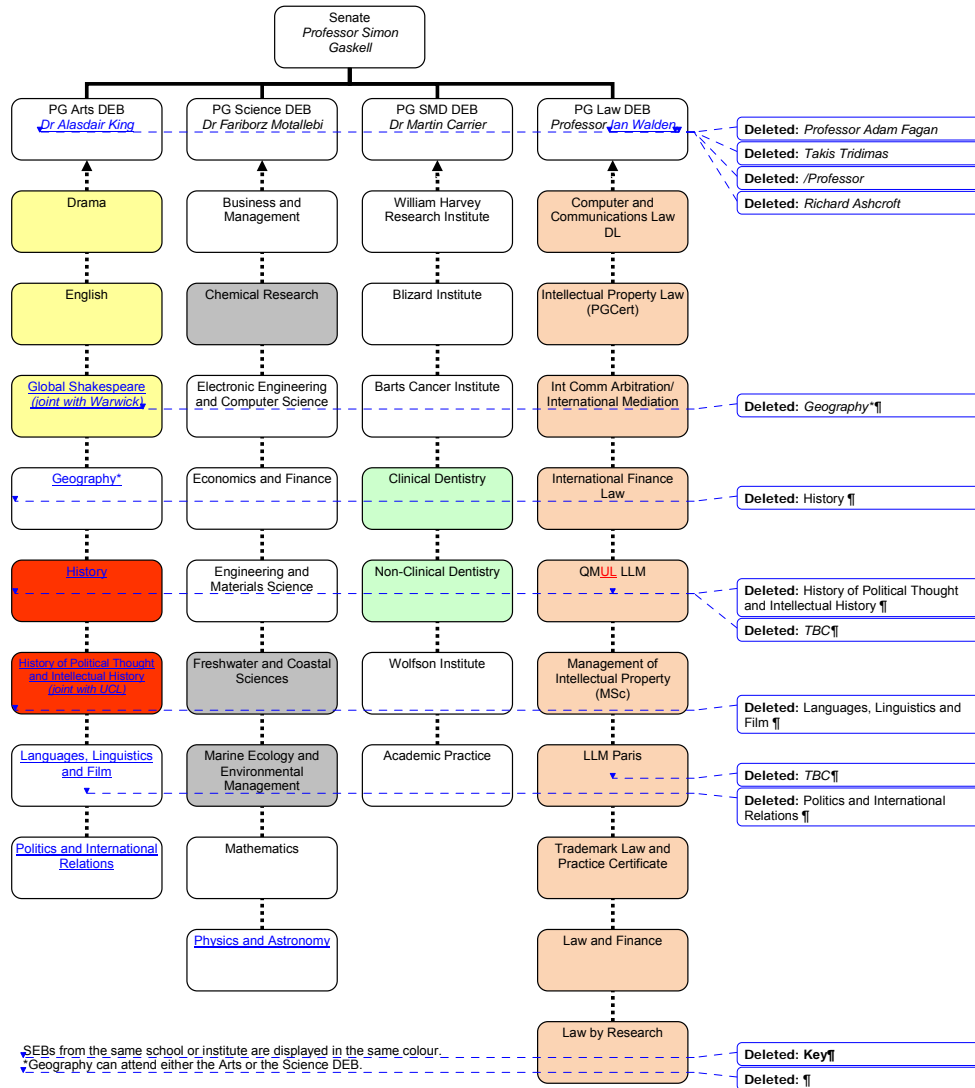
Deleted: 2013-14



Deleted: Key ‡

Deleted: can

Postgraduate Examination Boards 2014-15



Appendix G Templates

Appendix G contains links to a number of formal templates for the use of examinations boards. These templates must be used for all official examination board business. The landing page for all electronic versions of the templates is <http://www.arcs.qmul.ac.uk/quality/examination-boards/index.html>

Please amend phrases in red as appropriate, delete any explanatory comments before submitting, and ensure that pages are numbered (the electronic templates include numbering).

- i. Standard Subject Examination Board Agenda
<http://www.arcs.qmul.ac.uk/quality/examination-boards/Templates/2013-14%20templates/113235.dotx>
- ii. Standard Subject Examination Board Minutes
<http://www.arcs.qmul.ac.uk/quality/examination-boards/Templates/2013-14%20templates/113236.dotx>
- iii. Associate Subject Examination Board Agenda
<http://www.arcs.qmul.ac.uk/quality/examination-boards/Templates/2013-14%20templates/113237.dotx>
- iv. Associate Subject Examination Board Minutes
<http://www.arcs.qmul.ac.uk/quality/examination-boards/Templates/2013-14%20templates/113238.dotx>
- v. Extenuating Circumstances Sub-Board Agenda
<http://www.arcs.qmul.ac.uk/quality/examination-boards/Templates/2013-14%20templates/113239.dotx>
- vi. Extenuating Circumstances Sub-Board Minutes
<http://www.arcs.qmul.ac.uk/quality/examination-boards/Templates/2013-14%20templates/113240.dotx>
- vii. Subject and Degree Examination Board Chair's Action Form
<http://www.arcs.qmul.ac.uk/quality/examination-boards/Templates/99427.doc>
- viii. Subject Examination Board Report to the Degree Examination Board
<http://www.arcs.qmul.ac.uk/quality/examination-boards/Templates/99432.doc>
- ix. Extenuating Circumstances Monitoring Form
<http://www.arcs.qmul.ac.uk/quality/examination-boards/Templates/2013-14%20templates/113241.u.dotx>

Appendix H Generating SEB Reports from MySIS

These reports will extract data from the Student Record System so that it can be presented and discussed at the relevant Exam Boards.

You will need to enter the following URL into your internet browser:
<https://webapps.is.qmul.ac.uk/seb/>

You will then need to enter your usual username and password. Once logged in, you will see a number of options on the left hand side. Below are descriptions of each option.

The data used in the reports is taken directly from data in the SIS. Please note that this data is refreshed each hour on the hour. The refresh takes around 8 minutes to complete, but it means that any reports run during this time will return an error or no data. Therefore, you are advised not to run the SEB reports between the hour and 10 minutes past.

Refreshes will be run daily between 06.00 and 22.00 during the exam board period. If your board is taking place outside of the official exam board period, then you will need to request an ad-hoc refresh of the data.

Student Detail Report

This is generated in XML format, to be opened with Word. It lists the profile of each student within a domain, including all modules studied, marks and grades achieved, the College Mark if the student is a finalist, and year means.

Deleted: college

Deleted: m

1. Click on the Student Detail tab on the left hand side
2. Select your Domain from the first drop down box
3. Select your programme/route from the dropdown box. Leave this as All Programme/Route if you wish to select all.
4. Enter in the date of your Exam Board
5. If you wish student names to be included in the report then select the No button next to Anonymous. If not, select the Yes button.
6. If you wish the student's advisor to not appear in the report, then you can select this option.
7. Select your sort order
8. Click the Create button

Your report will now begin to generate. This may take some time if this is the first time you're generating the report and/or if you've retrieved a large group of students.

Once it has generated, you can either choose to open or store your file. It is recommended that you initially save your file before opening it.

| | |
|---------|--|
| Status | This is the current enrolment status of the student. |
| Debtor | This field indicates whether the student is a debtor. This field is maintained by the Finance team, and will prevent the student from seeing final marks, appearing on pass lists, receiving transcripts, etc. |
| Advisor | This is the student's advisor. |

| | |
|-----------------------------|--|
| Module Results | These are sorted by academic year and by mark/grade. If the TMR process (module lockdown run by the Academic Registry) has not yet run for this module, then only the actual marks will be displayed. |
| Results Summary | This provides a summary of the grades and the credits taken and passed. This is split into development year. |
| Year Mean calculations | These calculations do not take into account any modules which are Transcriptable Only or Study Only. |
| Recommendations | The College Mark and Recommended Award Class will only be displayed for Final year students if the Progression process has been run for the student. The Recommended Progress code will only be displayed if the Progression process has been run for the student. |
| Module Status: <i>new</i> | Module Status now added for each module. The possible values are: <ul style="list-style-type: none"> • COM: student has completed the module, either through successful completion, or as they are now out of attempts. • RAS: student is currently in resit as they still have attempts remaining • SAS: module has not been TMR'd – this could be due to marks not yet entered, overall module mark not yet calculated, or just that the TMR process still needs to run for it. |
| Attempt Number: <i>new</i> | This shows the number of attempts that the student has had for the module. |
| Cumulative Mean: <i>new</i> | This is the mean of all the marks to date. |

Undergraduate Summary

This is generated in XML format, to be opened with Excel. It provides an overall summary of all your students and the number of credits they have passed per year and the yearly averages.

| | |
|--------------|--|
| Status | This is the current enrolment status of the student. Some of the more common ones are R-E-E (fully enrolled), R-R-R (Resitting out of attendance), R-I* (Interrupting studies). |
| Tutor | This is the student's personal tutor. If no tutor has been assigned, then N/A will appear. |
| Debtor | This field indicates whether the student is a debtor. This field is maintained by the Finance team, and will prevent the student from seeing final marks, appearing on pass lists, receiving transcripts, etc. |
| ADV | This field indicates whether the student has transferred in any advanced standing credits. |
| Y1 Average | This is the mean mark of all the modules taken in the first development year. |
| Y2 Average | This is the mean mark of all the modules taken in the second development year. |
| Y3 Average | This is the mean mark of all the modules taken in the third development year. |
| Crdts taken | This is the total sum of all credits taken by the student. |
| Crdts passed | This is the total sum of all credits passed by the student |
| Retake | This indicates whether any of the modules are retake modules. |

| | |
|----------------------|---|
| EC | This indicates whether the student has submitted an EC claim. This is taken from the marks/grades entered. |
| Recommended Progress | This is the progress code that the system has calculated for the student. |
| Agreed Progress | This is left blank for the Board to decide. |
| Notes | This is left blank as a space for you to make any notes as necessary. |
| Recommended Award | This is the recommended award. If the student has been recommended for an exit award, the award code will begin with X. |

Postgraduate Summary

This is generated in XML format, to be opened with Excel.

It provides an overall summary of students and the number of credits they have passed and taught and project averages. It also includes the number of credits that have a mark of less than 40 and less than 30.

The first sit and resit students are divided out into 2 worksheets. The resit worksheet lists those students who currently have a status of resitting out of attendance.

| | |
|----------------------|--|
| Status | This is the current enrolment status of the student. Some of the more common ones are R-E-E (fully enrolled), R-R-R (Resitting out of attendance), R-I* (Interrupting studies). |
| Tutor | This is the student's personal tutor. If no tutor has been assigned, then this will be blank. |
| Debtor | This field indicates whether the student is a debtor. This field is maintained by the Finance team, and will prevent the student from seeing final marks, appearing on pass lists, receiving transcripts, etc. |
| ADV | This field indicates whether the student has transferred in any advanced standing credits. |
| Retake | This indicates whether any of the modules are retake modules. |
| Credits taken | This is the total sum of all credits taken by the student. |
| Credits passed | This is the total sum of all credits passed by the student |
| Credits < 40 | This is the total sum of credits where the mark achieved is less than 40 |
| Credits < 30 | This is the total sum of credits where the mark achieved is less than 30 |
| Taught Average | This is the mean of marks for taught modules. |
| Project Average | This is the mean of marks for modules that are classed as a Project. |
| College Mark | This will only be displayed for those students who are eligible for award. |
| Recommended Decision | This is the progress code that the system has calculated for the student. |
| Agreed Decision | This is left blank for the Board to decide. |
| Recommended Class | This is the calculated classification. |
| Actual Class | This is left blank for the Board to decide. |
| Notes | This is left blank as a space for you to make any notes as necessary. |

Module Detail

This report provides the assessment and module marks for students on particular modules for the current academic year or a specific time period. It also provides some statistics; the failure rate, grade distribution, and average marks.

For each occurrence of the module, there are 3 worksheets:

1. Header page. This provides a summary of the module and its assessments.
2. Actual Report. This lists each student registered on the module, and the marks and grades achieved at assessment and overall module level.
3. Failure Rates & Grade Distribution. This provides analysis on the failure rates of the module and grade distribution.

Module Summary

This report provides an overview of module grade distribution and average marks by level for a specified number of academic years.

The first worksheet is an analysis of module results for those students who have completed at attempt 1. The next worksheet is an analysis of modules results for those students who have completed at resit.

Students who are yet to complete, eg. waiting to resit or held whilst extenuating circumstances or unfair practice are considered, will not be included in the report.

These statistics are not provided for approval by the Board but rather to enable comparison of the results for the modules for which they are responsible. The purpose of the report is to allow scrutiny of results for each module by internal, external and senior examiners as well as the Chair and the Examination Board.

Troubleshooting

Q: I have entered marks in SIS but they're not appearing on my SEB report.

A: This could be due to a number of reasons.

1. Check that the entered marks have been TMR'd. This means that the marks have been locked down which enables the report to pick them up. If you have run the Student Detail report and the marks are appearing under the Actual Marks section but not the Agreed marks section and the Module Status is still SAS, then this is certainly the case. You need to contact the Registry and ask them to TMR the marks for you.
2. The refresh of data may not yet have happened to pick up your marks. The data in the SEB reports is refreshed on an hourly basis each day between 06.00 and 22.00. If your data has only recently been TMR'd, then you will need to wait for the next refresh for this to be picked up in the SEB report.
3. You may have entered in the assessment marks without then calculating the overall module result. If this step hasn't been completed, then the TMR process cannot lock down the marks. You will need to run the Calculate module marks option on the Mark Entry screen and then contact Registry for the data to be TMR'd.

Q: A student isn't appearing in the report

A: Check that the student has an active status and is registered for the programme in MySIS. If they are no longer an active student, then they will not appear on the report. Only students with an active status (this includes

resitting out of attendance students and students on an interruption) will be picked up in the report.

- Q: **The marks have been updated and the results TMR'd but the progression status hasn't changed.**
- A: Double check that the changes to the marks will actually lead to a new progress code. If yes, then it could be that the progression code has not been regenerated following TMR. Check with the Registry. If they need to re-run progression, then you will need to wait for the hourly refresh for this to be picked up in the report.

| Page 3: [1] Deleted | | Simon Hayter | 01/06/2014 11:31:00 |
|--------------------------|---|--------------|---------------------|
| Date | Event | | |
| Oct-13 | Data collection begins on examination question papers, question paper approval, and examination stationery requirements (SIS task for SEB Chairs). | | |
| Oct-13 | Memorandum will be sent to school administrators informing them of the procedure for students applying for special arrangements. | | |
| *November 2013 | Circulation by the Exams unit to all Schools/Department requesting examination timetabling requirements. | | |
| *November 2013 | Circulation by UCL of questionnaire and proposed procedure for intercollegiate exam timetable. | | |
| *December 2013 | Deadline for return of completed questionnaire for intercollegiate exam timetable to QMUL's co-ordinator. | | |
| *December 2013 | Deadline to for all Schools/Departments to return to the Exams unit their timetabling requirements. | | |
| 13-Dec-13 | Strict deadline for reassessment opt-in/opt-out for UG and PGT students resitting out of attendance. | | |
| 13-Dec-13 | Strict deadline for reassessment opt-in/opt-out for students resitting in attendance. | | |
| *24-Jan-14 | Final deadline for submission of entries for the Intercollegiate Timetable and submission of any arranged dates and/or dates to be avoided for Intercollegiate Timetable. | | |
| 24-Jan-14 | Deadline for return of Religious Holiday form. Deadline for return of Intercollegiate Examination Entry Form. | | |
| *End of February 2014 | Last date for amendments to Draft Intercollegiate Timetable to be notified to co-ordinator. | | |
| *Mid-February 2014 | Draft Intercollegiate Timetable with candidate lists to be circulated. | | |
| 04/02/2014 (17:00) | <u>Strict deadline for all semester 1 associate marks to be entered into MySIS (using either upload or direct mark entry). Please do <i>not</i> leave entering assessment marks until this date. Marks should be entered as they become available.</u> | | |
| 04/02/2014 (after 17:00) | <u>Run TMR for all associate programmes: this generates module marks and allows SEB reports to be generated.</u> <u>After this date, only those with 'supervisor' access will be able to amend assessment marks and recalculate module marks in SIS.</u> | | |
| 5 – 14 February 2014 | Associate SEBs must be held in this period (SEB Chair, T&L Chair, and Associate Coordinator). | | |
| 24-Feb-14 | <u>Strict deadline for all changes to associate assessment marks to be made in SIS by supervisors.</u> <u>After this date, only Registry can amend marks.</u> | | |
| 24-Feb-14 | Deadline for associate SEB minutes to be submitted to Simon Hayter, Trudy Mason, Tessa Cornell, and Harry Gibney. | | |

| | |
|--------------------------|--|
| *Mid-March 2014 | Final Intercollegiate Timetable circulated. |
| Early March 2014 | Draft Exam Timetable (HSS and S&E) circulated. |
| End of March 2014 | Individual QM Exam Timetables to be released on MySIS. Individual QM Exam Timetables posted to non-enrolled students. Individual QM Exam Timetables and examination permits sent to intercollegiate students. |
| Mid-March 2014 | Last date for amendments to Draft QM Exam Timetable. |
| Mid-March 2014 | Final Exam Timetable (HSS and S&E) circulated (production of the Final HSS and S&E Timetable is dependent upon timely receipt of the Intercollegiate Final Timetable and requests for amendments from Exam Boards). |
| 14-Mar-14 | Deadline for new applications for special examination arrangements. |
| 19-Mar-14 | Examination Board Briefing. |
| 20 – 27 March 2014 | Final deadline for return of examination question papers to Academic Registry from Chairs of SEBs. The Exams Officer will arrange individual appointments. |
| March – April 2014 | Examination instructions to be sent to Intercollegiate contacts for transmission to candidates (these should arrive at least three weeks before the exams are due to begin to allow time for their distribution to candidates). Please ensure that Timetables are likewise sent in plenty of time to any intercollegiate students who have early examinations, (i.e. before the main examination period). |
| May-14 | Intercollegiate History Group 2 and 3 examinations. |
| 19-Jun-14 | UG Law Examination Board. |
| 26-Jun-14 | UG Medicine Degree Examination Board. |
| 22-May-14 | UG Dentistry Degree Examination Board |
| 06-Jun-14 | Last day of the HSS and S&E examination period. |
| 10/06/2014 (17:00) | <u>Strict</u> deadline for <i>all</i> UG (non-MBBS, BDS) <i>and</i> PG provisional assessment marks to be entered into MySIS (using either upload or direct mark entry). Please do <i>not</i> leave entering assessment marks until this date. Marks should be entered throughout the year as they become available. Please note that students will always be informed that marks are provisional until they are approved by an Examination Board and therefore subject to change. Students will not be able to view provisional examination or module marks at any time. |
| 10/06/2014 (after 17:00) | Run TMR for all UG (non MBBS, BDS) and PG programmes; this calculates module marks and allows SEB reports to be generated. After this date, only those with 'supervisor' access will be able to amend assessment marks and recalculate module marks in SIS. |
| 11 - 20 June 2014 | UG SEB meetings <u>must</u> be held during this period. SEB Secretaries/Chairs to generate SEB reports from MySIS. |

| | |
|--------------------------|--|
| 11 June – 4 July 2014 | PG SEB meetings <u>must</u> be held during this period. |
| 23/06/2014 (17:00) | <u>Strict</u> deadline for all changes to UG assessment marks (non MBBS, BDS) to be made in SIS by supervisors. After this date, only Registry can amend marks. |
| 23 June 2014 (17.00) | <u>Strict</u> deadline for UG SEBs to submit papers to Simon Hayter, Trudy Mason, and Tessa Cornell: SEB minutes; Report to the DEB; EC Monitoring Form; retake/first take forms (if any). |
| 27-Jun-14 | UG Arts Degree Examination Board. |
| 03-Jul-14 | UG Sciences Degree Examination Board. |
| 04-Jul-14 | UG Engineering Degree Examination Board. |
| 09-Jul-14 | Official publication of results date: undergraduate. (<i>students may receive results prior to this date, but this is the date from which the period permitted for appeals, UKBA processes, etc, begins</i>). |
| 11/07/2014 (17:00) | Deadline for <u>confirmed</u> PG marks to be submitted. Strict deadline for all changes to PG assessment marks to be made in SIS by supervisors. After this date, only Registry can amend marks. |
| 11/07/2014 (after 17:00) | Run TMR for all postgraduate marks. |
| 11/07/2014 (17:00) | <u>Strict</u> deadline for PG SEBs to submit papers to Simon Hayter, Trudy Mason, and Tessa Cornell: SEB minutes; Report to the DEB; EC Monitoring Form; retake/first take forms (if any). |
| 14 – 22 July 2014 | Academic Secretariat prepares for PG DEBs. |
| 23-Jul-14 | PG Degree Examination Board for Sciences, Arts, and Medicine & Dentistry (joint summer board). |
| 28-Jul-14 | Official publication of results date: postgraduate. (<i>students may receive results prior to this date, but this is the date from which the period permitted for appeals, UKBA processes, etc, begins</i>). |
| 4 – 15 August 2014 | Late summer examination period |
| 29/08/2014 (after 17:00) | Run TMR for all UG (non-MBBS, BDS) and PG late-summer assessment; this calculates module marks and allows SEB reports to be generated. After this date, only those with 'supervisor' access will be able to amend assessment marks and recalculate module marks in SIS. |
| 1 – 8 September 2014 | Late summer SEB meetings <u>must</u> be held during this period. SEB Secretaries/Chairs to generate SEB reports from MySIS. |
| 11-Sep-14 | <u>Strict</u> <u>deadline</u> for all changes to late-summer assessment marks to be made in SIS by supervisors (excluding MBBS, BDS). After this date, only Registry can amend marks. |
| 11-Sep-14 | Deadline for late summer SEB minutes to be submitted to Simon Hayter, Trudy Mason, and Tessa Cornell. |

| | |
|--------------------------------------|---|
| 29/09/2014 (17:00) | <p><u>Strict deadline</u> for <i>all</i> PG provisional assessment marks to be entered into MySIS (using either upload or direct mark entry). Please do <i>not</i> leave entering assessment marks until this date. Marks should be entered throughout the year as they become available.</p> <p>Please note that students will always be informed that marks are provisional until they are approved by an Examination Board and therefore subject to change. Students will not be able to view provisional examination or module marks at any time.</p> |
| 29/09/2014 (after 17:00) | <p>Run TMR for all PG programmes; this calculates module marks and allows SEB reports to be generated.</p> <p>After this date, only those with 'supervisor' access will be able to amend assessment marks and recalculate module marks in SIS.</p> |
| 30 September - 10 October 2014 | All autumn PG SEB meetings <u>must</u> be held during this period. SEB Secretaries/Chairs to generate SEB reports from MySIS. |
| 14-Oct-14 | <p><u>Strict deadline</u> for all changes to postgraduate assessment marks to be made in SIS by supervisors (excluding MBBS, BDS).</p> <p>After this date, only Registry can amend marks.</p> |
| 14/10/2014 (17:00) | <u>Strict deadline</u> for PG SEBs to submit papers to Simon Hayter, Trudy Mason, and Tessa Cornell: SEB minutes; Report to the DEB; EC Monitoring Form; retake/first take forms (if any). |
| 15 - 16 October 2014 | Academic Secretariat prepares PG DEB reports. |
| 17-Oct-14 | Postgraduate Sciences Degree Examination Board. |
| 22-Oct-14 | Postgraduate Laws Degree Examination Board. |
| 24-Oct-14 | Postgraduate SMD Degree Examination Board. |
| 29-Oct-14 | Postgraduate Arts Degree Examination Board. |
| 03-Nov-14 | Official publication of results date: postgraduate. (<i>students may receive results prior to this date, but this is the date from which the period permitted for appeals, UKBA processes, etc, begins</i>). |