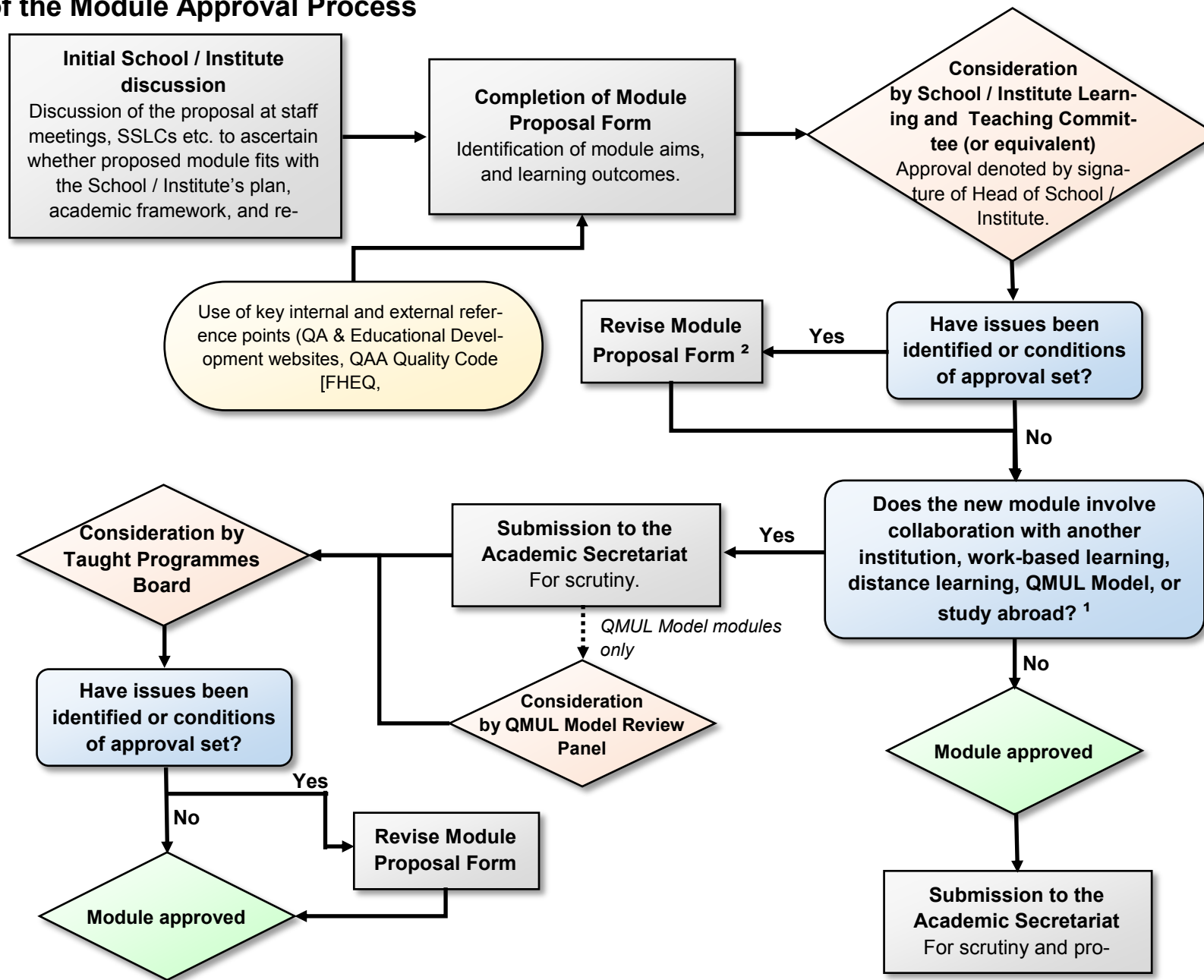


Summary of the Module Approval Process



¹ Where a new module is to be developed with or delivered by a new collaborative partner, a Stage 1 must be completed and approved by Partnerships Board before it can be considered any further. All QMUL Model modules must be considered by the QMUL Model Review Panel prior to submission to Taught Programmes Board.

² Any significant revisions to the proposal may need to be resubmitted to the relevant approval body for consideration.