



Archives Resource Guide - **English**

Introduction

The archives holds institutional records, collections of private papers and archives of organisations in a range of formats, visual as well as written, such as letters and papers, manuscript, parchment, photograph, audio-visual and digital media and microfilms, dating from the 18th century to present day. The collections also include rare prints and artefacts dating from 16th century to 1960s.

The Archives provides convenient access to a wealth of primary sources for enhancing knowledge of history and conducting original research. Located on the 2nd Floor of the Mile End Library, the Archives Reading Room provides a dedicated quiet study space for anyone wishing to view items held in the Archives. Email archives@qmul.ac.uk, telephone **020 7882 3873** or visit the website www.library.qmul.ac.uk/archives for more information.

Research Topics

The Archives hold many resources for studying English, and may be useful for students or researchers studying modules relating to Early Modern Studies, Nineteenth-Century Studies, Genre Studies and Critical Theory and Modernism and the Early Twentieth Century, as well the following research topic:

- Shakespeare
- Nineteenth Century Aesthetic Prose
- Victorian Literature, Poetry and Ideas of Culture
- The Bible as/and Literature
- Poetry
- Feminism
- Crisis of Culture
- Modernism
- Writing the First World War
- D. H. Lawrence
- Thomas Hardy
- Virginia Woolf
- Writing in the Modern Age
- Gender, Religion, Imperialism, Science
- Twentieth Century: Literary Theory, Aesthetics, Poetry and Poetics

Catalogues and Finding Aids

Collections can be searched via the *Archives Catalogue*: <http://archives-catalogue.library.qmul.ac.uk/CalmView/default.aspx> Digital records and online exhibitions are available through the archives website <http://www.library.qmul.ac.uk/archives> For some uncatalogued collections only a summary description is available in the Archives Catalogue. Alternative finding aids such as draft box lists are available. Email the archives to request a copy: archives@qmul.ac.uk or for advice about your area of research.

A-Z of Relevant Collections



Delf Smith, Ellen (1883–1980): Papers of the botanist 1895-1974 and former lecturer at Westfield College. Documents her experiences of academic life in early 20th at the all women's college. Personal diaries and papers chart her marriage to the print maker, Percy Smith (*Ref No: PP3*).

East London Papers: Journal of East London history, social studies and the arts (*Ref No: ELP*).

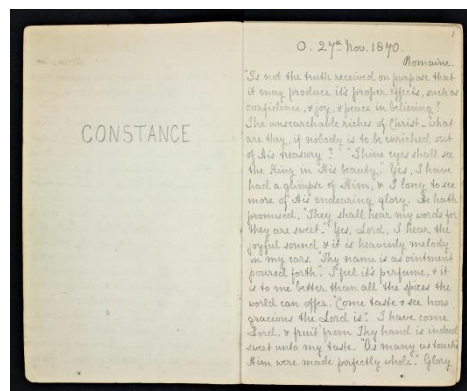
Fowler, Rachel (fl1872-1927): Travel diaries of the former student of Westfield College, c1927 (*Ref No: PP31*).

Galbraith, Winifred: Papers of the alumna of Westfield College, relating to her missionary work in China in dating from c1920s-1940s, including photographs of students at the school. Also contains manuscripts for an unpublished novel, and an autobiography, both focussing on experiences of missionary work in China (*Ref No: PP45*).

Isaacs, Jacob (1896-1973): Research papers, and notes of the Chair of English Language and Literature at Queen Mary College from 1952-1964, dating from 1885 and 1914-1970. The almost encyclopedic collection of notes covers a very wide range of subjects relating to his teaching of early modern to modern literature and language, literary criticism, aesthetics, poetry, and drama (*Ref No: PP17*).

Jenkins, Harold (1909-2000): Research papers relating to his teaching of Shakespeare at University College London and Westfield College, including lecture notes, research notes, papers regarding publications, dating from 1930-1994 (*Ref No: PP28*).

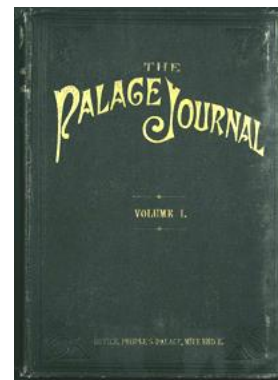
Lyttelton, General Sir Neville Gerald (1845–1931): Papers of the Lyttelton and Grenfell families, c1840-1960. Letters and photographs of Neville Lyttelton during his service in India, Africa, and Ireland during late Victorian and Edwardian period, provide an insight into colonial history. Letters to family and friends document service in the First World War, and Second World War and the impact on those at home. Photographs, sketches, poetry, and papers relating to the plight of Belgian refugees and help afforded to them by Lady Lyttelton. Letters with eminent friends such as Rudyard Kipling, E.V. Lucas, Lady Gregory, Henry Newbolt, Francis W. Hirst, Katherine Tynan Hinkson, W.B. Yeats, family photographs and other ephemera from late Victorian and Edwardian period (*Ref No: PP5*).



Maynard, Constance (1849-1935): Writings of the pioneering Mistress of Westfield College, dating from 1866-1935, provide an excellent source for the study of religion, gender and sexuality, and education in the Victorian and Edwardian periods. Various diaries chart almost seventy years of her life. The 'green book' diaries reveal her emotional reactions to events in her life, while the day diaries summarise her daily activities. Other diaries such as her travel journals, and Sundial diaries and diaries of Effie (Stephanie Anton, a child she adopted) focus on particular events or periods of her life. In her unpublished autobiography written between 1915 and 1933, she reflects on events described in her diaries. Other items such as her bible, annotated throughout with personal notes, and poetry also reveal her interests and influences (*Ref No: PP7*).

Rocker, Rudolf (1873-1958): Typescript translation with annotations of 'Behind Barbed Wire and Bars', an unpublished work by Rudolf Rocker on his internment during the First World War. Translator unknown, but possibly Joseph Leftwich (1892-1984).

The People's Palace: Institutional records provide an insight in art and culture provision in East London in the nineteenth and early twentieth century. The Palace Journal, newsletter of the People's Palace which ran from 1887 to 1895, provides an excellent snapshot of the time and of East London, and features general 'public interest' articles, poetry, letters to the editor, and stories, often serialised, including articles by Arthur Morrison (1863-1945), who wrote *A Child of the Jago* (Ref No: QMC/PP).



Queen Mary University of London: Records of Queen Mary and Westfield College and the current institution, 1989–present (Ref No: QMW).

Queen Mary College: Includes records of former bodies East London College, and East London Technical College which developed out of the People's Palace Technical Schools, 1880s-1989. Papers chart the development of teaching of english literature and language, as well as the creativity of former students for example in the stories, poetry, articles published in student magazines, (Ref No: QMC).

Westfield College: Institutional records of the former women's college, chart it's establishment as a pioneering higher education college for women in Hampstead in 1882, the incorporation into the University of London, the introduction of male students in 1964, and merger with Queen Mary College in 1989. Reveals the role of religion, a commitment which differentiated the college from contemporaries, and fostered international links, namely with Christian colleges established by former students in India and China. Also provides an excellent insight into higher education for the first generations of women to experience it, the changing relationships between staff and students as the college expanded. Includes reminiscences and memorabilia from former staff and students, (Ref No: WFD).

Westfield College Print Collection: Rare prints of lithographs, mezzotints, copper plate engravings and sketches of artwork dating from 17th century to the 20th Century. Artists include Francesco Bartolozzi, John Constable, Eugene Delacroix, Thomas Frye, Hendrik Goltzius, Francisco Goya, William Hogarth, Theodore von Holst, Giles Hussey, Lucas van Leyden, John Linnell, Carlo Maratta, John Martin, Giovanni Battista Piranesi, Salvator Rosa.