

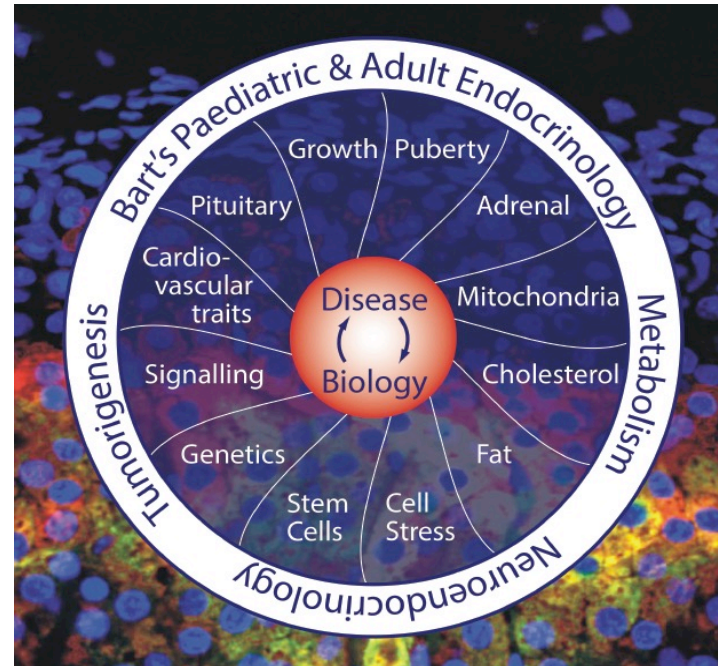
# Barts Pituitary Centre



**Barts Health**  
NHS Trust

**Centre for Endocrinology  
WHRI**

**Barts and the London  
School of Medicine and  
Dentistry  
QMUL**



**Department of  
Endocrinology and  
Paediatric  
Endocrinology**

**Barts Health NHS Trust**



# Burden of pituitary disease

Rare disease - 7% of population

Delayed puberty – 2%



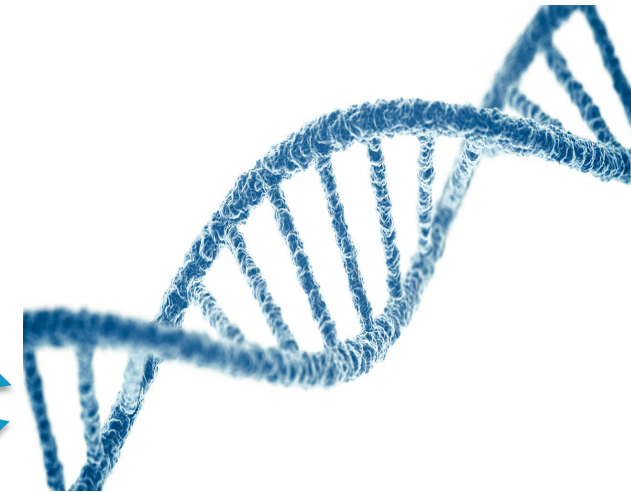
Pituitary adenomas – 1:1000

Hypopituitarism – 1:4000

Craniopharyngiomas – Most common intracranial paediatric tumour

**Impact:**  
high rate of  
**morbidity & mortality**

50% loss of quality-adjusted life-years  
in craniopharyngiomas  
*Ali, J Neurosurg Pediatr*  
2014



Genetically determined  
*90% unknown cause*

# Research cycle

*Patient & Family cohorts*

**Clinical question**

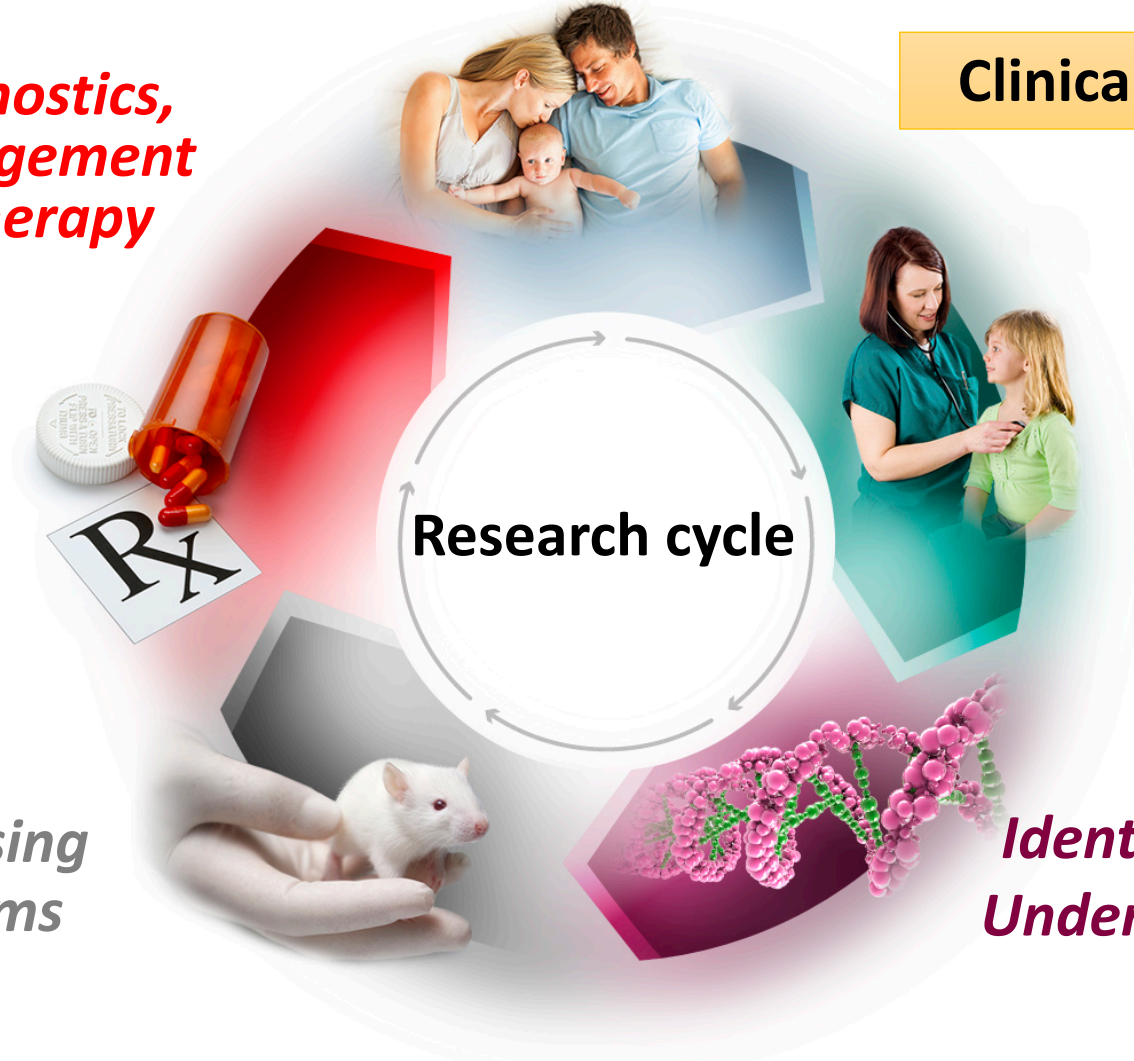
*Diagnostics,  
Management  
& Therapy*

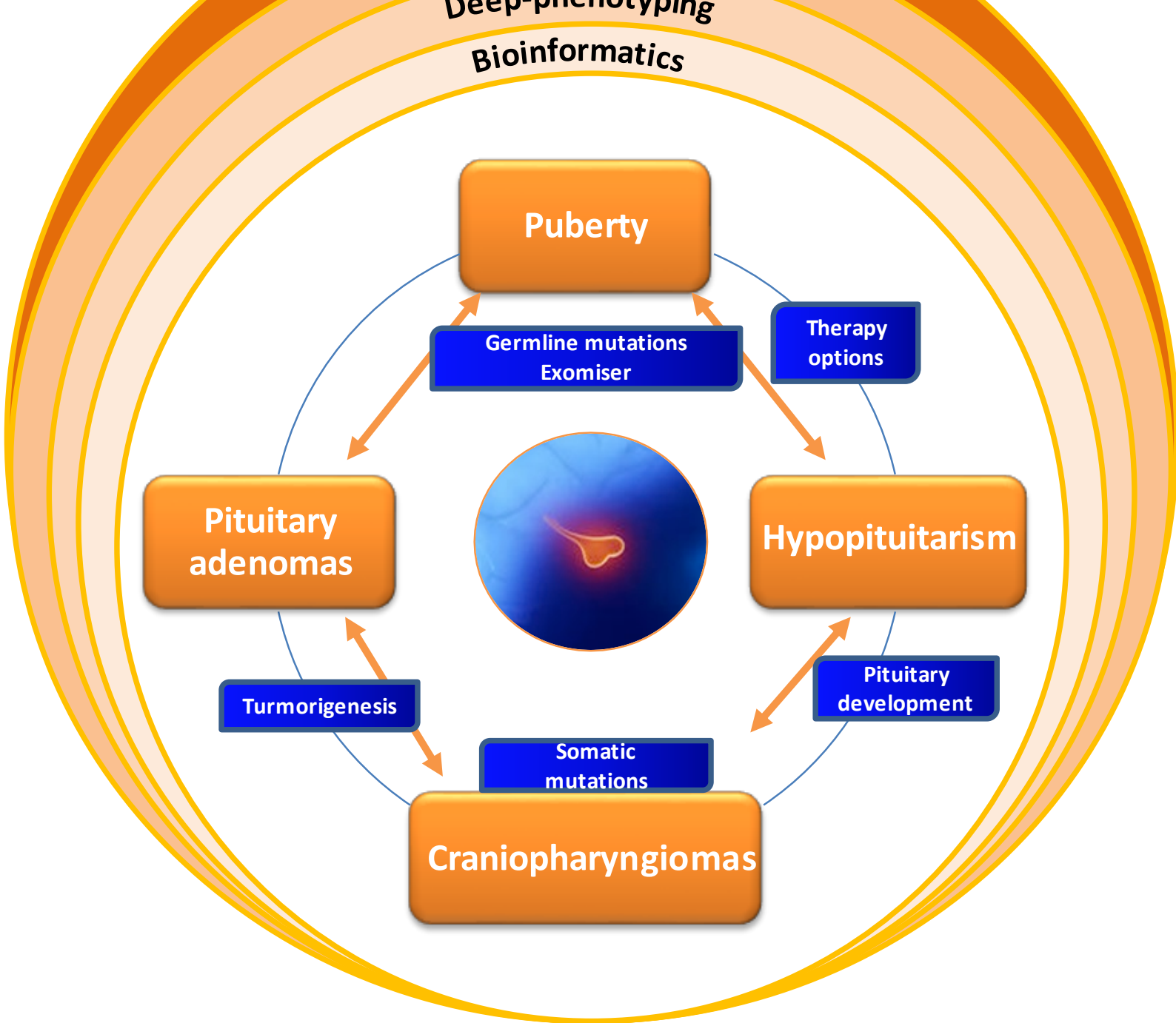
*Deep  
phenotyping*

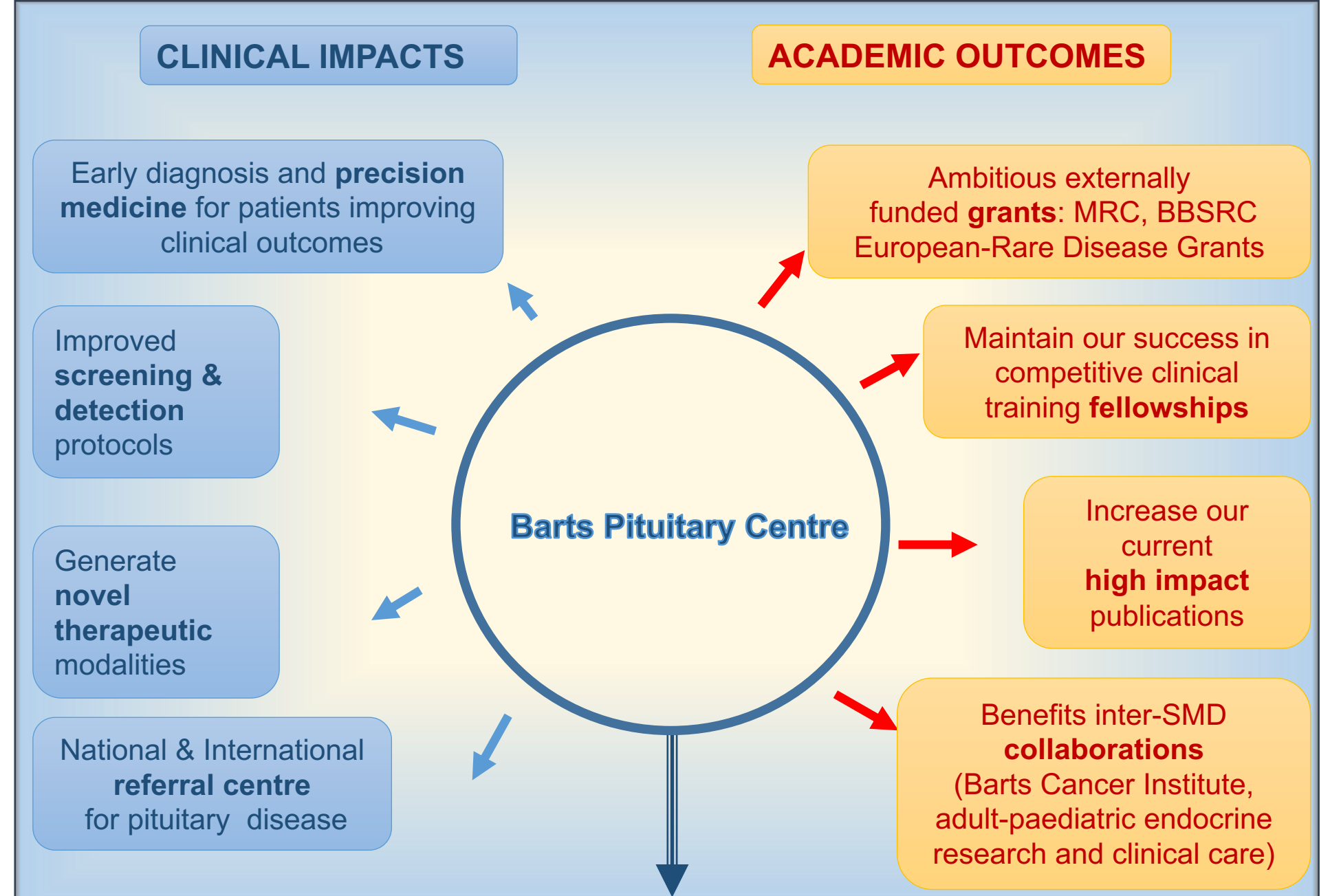
**Research cycle**

*Characterising  
Mechanisms*

*Identification of  
Underlying Cause*







**CLINICAL IMPACTS**

**ACADEMIC OUTCOMES**

**Barts Pituitary Centre**

Early diagnosis and **precision medicine** for patients improving clinical outcomes

Improved **screening & detection** protocols

Generate **novel therapeutic** modalities

National & International **referral centre** for pituitary disease

Ambitious externally funded **grants**: MRC, BBSRC European-Rare Disease Grants

Maintain our success in competitive clinical training **fellowships**

Increase our current **high impact** publications

Benefits inter-SMD **collaborations** (Barts Cancer Institute, adult-paediatric endocrine research and clinical care)

**World-Leading Centre for Pituitary translational research**

**Novel genes**

**NHS gene panel**

**Medical treatment for cranio**

**Neonatal mini-puberty management**

**Sustainability**

**Training**

**REF**

**Genomics England**